

DNR Gives Mill Creek Park Plans Tentative Approval

Despite eloquent efforts of local residents, Lima township officials, many environmental groups, and the Department of Agriculture, the Department of Natural Resources (DNR) has sanctioned Mill Creek Park plans with tentative approval.

Huron Clinton Metropolitan Authority (HCMA) now has only to secure federal funding from the Bureau of Outdoor Recreation (BOR) to make its brain child a reality.

Federal money could be available to the park planners as early as July 1, 1974 if BOR's environmental impact statement which is required by law, is favorable. HCMA's timetable forecasts that it will be ready for public perusal and reaction in public hearings by early next year.

It will be at least 10 years from the funding date before land acquisition and development will be completed. Only then would the park be ready for public use.

Realists in the Mill Creek Research Council and in Lima township government have little hope that BOR's impact study will support the findings of planning consultants Johnson, Johnson & Roy who labelled the park a detriment to Lima township's ideal development. The federal agency is not expected to be attentive to local opposition.

Yet hope springs eternal in the hearts of die hard park opponents. They are heartened by the fact that DNR's approval is given tentatively. It will be withdrawn if the environmental impact statement and the water of the park is unwise.

Twice in the position statement issued by DNR to explain the approval of the plans, director A. Gene Gazlay states that sufficient information about the effect of Mill Creek impoundment on the area's water quality has yet to be produced. "Certainly no final decision can be made until that information

is available from the Gannon study," writes Gazlay.

Encouragement for anti-park factions also comes from another source which is somewhat removed from the Lima township front. HCMA is under fire in Detroit and Wayne county for spending millions of their dollars on parks out of reach of residents in those areas. As a result, Wayne County Commissioners have temporarily withheld their share of HCMA dues, demanding that HCMA build a parkway in their county.

Although the commissioners may rescind this action after reconsideration at their May 31 meeting, the possibility that HCMA funds could be cut fills Mill Creek park opponents with glee. It would at least bog down work on Mill Creek.

In the position statement sent out last week, Gazlay acknowledges that reaction to the Mill Creek plans is mixed. He pinpoints the opposition in the Lima township and Detroit are-

as while pointing out that Ann Arbor and Ypsilanti residents favor the project.

Given the interest expressed by the fast-growing population centers in fast growing Washtenaw county, DNR is certain the park will be used. "There is no reason to question the HCMA estimate of upwards of two million visitors per year when the park is fully operational," says Gazlay. HCMA estimates that approximately half the use of Mill Creek would be by Washtenaw county residents.

In response to critics who say the park is too far from Detroit to be used by residents from the urban center, Gazlay says, "It would indeed be desirable to locate a major metropolitan park closer to Detroit; however, suitable sites with impoundment potential appear to be lacking and would be much more expensive even if available."

Furthermore, he argues, that the needs of Washtenaw county residents for water based rec-

reation are amply documented. "The construction of a park in this area fits in the Michigan Recreation Plan (as revised in 1970) which was approved by BOR to qualify the state to continue to be eligible for Land and Water Conservation Funds," states the position statement.

That plan emphasizes, among other things, the urgency of continued aggressive action to acquire and develop recreational facilities to meet the needs of the southeast sector where approximately half of Michigan people live."

After giving this general justification for the park, Gazlay explains the grounds on which the many arguments raised at the March 15 public hearing were dismissed.

The argument that there is inadequate sewage treatment facilities in the area to support the park, an argument put forth by the Chelsea Village Council, was judged irrelevant by DNR. Its answer: "The state of Mich-

igan would require adequate provision for sewage treatment before it would allow the park to operate."

In response to Fred Mills' presentation at the March 15 public hearing, the DNR said that the loss of tax base for Chelsea School District would soon be compensated for by the value of peripheral development. The loss of revenue, according to Gazlay, would be slight and only temporary.

Those who argued that access to the park would be difficult along the already clogged I-94 corridor were countered by DNR's assertion that the interstate must be improved anyway. The cost of redesigning the I-94 interchange at Fletcher Rd. would be great, says DNR, but it is likely that improvements would be necessitated by the expected increase in population whether or not the park is built.

DNR sided with HCMA in battling down the suggestion that HCMA build a series of smaller

parks closer to Detroit rather than the 4,800-acre Mill Creek project. While DNR supports the concept of smaller parks, it believes that they are the responsibility of county and municipal governments.

The largest portion of the position statement is devoted to consideration of the most important issue raised by the park plan, the loss of agricultural land. "DNR takes very seriously the contention of its sister state agency, the Department of Agriculture, that high-quality lands in Michigan must be reserved for the continued production of food and fiber."

If the land could be "frozen" in its present use, says Gazlay, DNR would consider that alternative to the park. But, according to growth rate projections, "people will simply overrun the land."

"The DNR's best judgment is that suburban development of Lima township, including the Mill Creek Metropark site, is inevita-

ble" unless the park is constructed.

In the event of a food crisis, says DNR, park lands are more easily reassigned to agricultural purposes than land developed for residences. In this way, DNR attempts to mitigate the Department of Agriculture's warnings that all the farmland available will be needed for food production in the future.

The position statement concludes with an explanation of why DNR gave its approval of the plan before an environmental impact statement had been prepared. It had been suggested that DNR conduct its own study rather than leaving the chore to BOR.

The BOR study is required by law and must be done whether or not a local study is already completed. For the state to conduct its own study would be an unnecessary and wasteful duplication of effort, says the state agency.

WEATHER

	Max.	Min.	Precip.
Wednesday, May 16	40	35	0.00
Thursday, May 17	43	31	0.00
Friday, May 18	32	20	0.00
Saturday, May 19	37	25	0.00
Sunday, May 20	37	22	0.00
Monday, May 21	46	34	0.00
Tuesday, May 22	50	38	0.00

By H.K.L.

The Chelsea Standard

ONE HUNDRED-THIRD YEAR—No. 49

16 Pages This Week

CHELSEA, MICHIGAN, THURSDAY, MAY 24, 1973

15c per copy

SUBSCRIPTION: \$4.00 PER YEAR

Track Team Places Second In Conference

Chelsea trackmen could not come up with the speed and strength required to command the Southeastern Conference teams, May 16, when they faced off on South Lyon's track. As a result, Saline took the title by gathering 61 points; Dexter snatched a surprising second with 40 points and Chelsea took third with 38.

Nevertheless, Chelsea finished second in the conference in overall competition by coming in ahead of South Lyon who ended the meet in fourth place with 33½ points. Final standings were determined by combined dual meet and league meet records.

Other competitors at the conference meet were Novi, 28; Milan, 22; Lincoln, 10½; and Dundee, 9.

The Wednesday afternoon meet, which was held in cold and windy weather, as had been the rule this season, began to take form after the field events. Saline came out of that arena with a much higher total than was expected. Conversely, Chelsea had totalled three or four points less than had been predicted. The clinchers of this trend were the one-two finishes Saline earned in the mile run and the 100-yard dash. The loss in the 100 was a jolt.

Dexter, too, amassed some unexpected prizes in the field events, and their winning performances in the 800 and both hurdle events put everyone on their ear. The forecast had not even included Dexter but had billed Saline, Chelsea and South Lyon as the chief contenders in the contest.

Chelsea had one surprise of its own. Ishmael Picklesimer took the shot put with his best effort of the season, a hefty 47½' heave. It was the last put of the event, a thrilling finale.

Less surprising but no less gratifying was Tim Lancaster's showing in the pole vault. His win in that event was a replay of his achievement a year ago. The win-

ning jump was 12'6" in miserable conditions.

Bruce Guster was back on top in the long jump with a winning leap of 19'11". His talents were also seen in the 440-yard dash, in which he placed second at 51.2, and in the mile relay. His efforts in the latter event brought the Bulldogs into second place. Other men on the mile relay team which ran the race in 3:38.2, were Jeff (Continued on page eight)

Fire Destroys Small Barn On Lima Farm

The small barn on Peter Piezen's property at 1260 Lima Center Rd., was completely destroyed by fire, May 16, as a result of children playing with matches. No one was hurt.

The barn, which went up in flames at about 4:40 in the afternoon, had burned to the ground by the time the Chelsea Fire Department was able to respond to the call. The loss is estimated at approximately \$2,500.

Chelsea firemen, under the direction of Assistant Fire Chief Mac Packard, were able to contain a small garage fire, Monday, at the home of Paul Nicolai at 716 S. Main. The garage, which had been ignited by a rubbish fire nearby, was not extensively damaged. The call came at 11:40 Monday morning.

The Fire Department was busy again, Monday afternoon, when they were called to douse a grass fire that had sprung up along the Penn Central tracks east of town. It took the crew about 30 minutes to put out the blaze that was started by sparks from a train engine roaring through.



MAYOR EXCHANGE DAY, which brought 10 enthusiastic delegates to Chelsea from Sparta, was the highlight of Michigan Week in the village. The village's tidy appearance and the Medical Center made the biggest impressions on the visitors but they were also delighted with their tours of the Jiffy plant and Chrysler Proving Grounds. After a day of touring, the group relaxed at Don Wood's home with their Chelsea hosts before traveling to Battle Creek for a Sparta-Chelsea dinner. Shown here with wives seated in

front of husbands, are from left, Police Chief Bob Apel and Eleanor, Councilman Norm Polderdyk and Glenda, Councilman William Bloom and Beatrice, Fire Chief Gale Taylor and Dixie, and Sparta Village President Henry Beverwyk and Freida. Standing in back are Chelsea Village Council members and wives, Mr. and Mrs. Don Wood, Mr. and Mrs. Hal Pennington, Mr. and Mrs. Sam Johnson, and Mr. and Mrs. Tom Dmoch.

Visitors Find Similar Problems

"I never knew before that Jiffy Mixes are made in Michigan," exclaimed one of the lady visitors from Sparta. One of the men said, "I sure enjoyed that ride around the oval at the Chrysler Proving Grounds," and another chimed in with, "Making friends is one of the best parts of the trip."

While different aspects of the experience stood out in individual memories, they all agreed that the benefits from participating in Mayor Exchange Day are varied, sometimes surprising, and altogether enjoyable. It was a 10-member delegation from Sparta that was getting the surprises and enjoyment from a tour of Chelsea, Monday.

"It's very much worth the money spent," said Sparta Village President Henry Beverwyk who is getting to be an old hand at Exchange Days. Although this is his first year as village president, he has attended six such programs as a village council member. He says Chelsea, "of all the towns we've seen, gives the best appearance."

"It's an education every time," says the president, who was especially interested to learn about Chelsea's zoning ordinance. "We have been thinking about a stricter zoning ordinance but we were worried it would cause problems. Yours is very much like what we're thinking about and it's good to know you have not had much trouble with it."

The trip was also an education for newly-elected councilman Norman Polderdyk. Asked if he had learned anything he replied, "I'm going back with lots of questions to ask."

Sparta Fire Chief Gale Taylor and Police Chief Robert Apel had an opportunity to catch a glimpse of the workings of their counterparts while touring the village. Taylor leads "the best in the north," 24 volunteers, while the police chief commands six full-time police officers, a larger force than Chelsea's.

While the Sparta visitors were touring Chelsea Methodist Home, the Chelsea Medical Center, the industries and environs, Chelsea Village President, A. E. (Mac) Fuiks and Village Administrator Fritz Weber and their wives were getting a similar view of Sparta. The Sparta visitors feasted on steak and lobster at the Medical Center; the Rotary Club fet-

ed the four Chelseaites in Sparta.

Sparta's waste water plant, a saw mill and furniture factory were on the agenda in that village in addition to a good look at some of the many apple orchards in the area.

Sparta, which is 13 miles north of Grand Rapids, is in the

heart of the fruit country. Their farms, as often as not, have controlled atmosphere fruit storage buildings instead of barns.

The two village councils and wives met for a banquet, Monday evening, in Battle Creek, to top off the Exchange Day festivities.

While the two villages are not at all identical on the surface, the representatives found they had much in common. "If towns are about the same size, they usually have the same problems; they (the problems) may come up in a different order, but they are the same," said one Sparta representative. That's what makes the day worthwhile.

Musical Set For Sunday At St. Paul's

There will be many joyful noises emanating from St. Paul United Church of Christ this Sunday evening as musicians of all shapes and sizes participate in the Spring Musical.

The festivities will begin at 7:30 p.m. in the sanctuary where the St. Paul choir and the Chelsea High school choir will sing a wide selection of religious songs. The program will include a number of spirituals sung by the Chancel Choir.

After the chorale numbers, the congregation will adjourn to the more informal atmosphere of the basement to continue the celebration with a mixture of local talents providing focal points of interest. Piano duets, various singing groups and an exuberant sing-along will wind up the evening's entertainment. "It will just be a fun time," said a church spokesman.

Sunday evening was picked for the occasion because it is the eve of Memorial Day. Everyone will be able to stay and enjoy themselves without the worry on Monday work and school weighing on them. Everyone is invited to attend.

A free will offering will be collected during the evening with the money being shared by the high school and church choirs. St. Paul will use its robes for the Children's Choir.

Baseball Team Wins Tecumseh Tournament

Chelsea's varsity nine experienced its one brief shining hour, last Saturday, when they captured the championship at Tecumseh's Invitational Tournament. They downed Saline and their hosts to take the trophy.

The morning game, against Saline, was a tense 4-2 affair strung out on the strong pitching arm of Perry Johnson and the timely fielding of Steve Schanz.

Steve was the principal in the game-saving play in the seventh inning. Tecumseh had a chance to smash Chelsea's lead with men on second and third and two outs. When Indian Tim Slesky hit a short pop-up the out was dependent on the second baseman's fast feet and sure hands. Steve dashed from the bag deep into the infield to make the catch.

Perry helped his own cause, not only on the mound but at bat where he had two for three. Dave Tucker was another strong man at bat for Chelsea. He was two for two.

Tecumseh came to face Chelsea after defeating Brooklyn Columbia Center in a 4-2 game mirroring seen in the morning had evaporated by afternoon.

The championship, taken 8-7, was won in a 10 inning free-for-all. "It didn't look like anyone wanted to win the ball game," said Coach Carl Genske, recounting Chelsea's 11 errors.

"In the first innings, we gave them four runs on two hits and five errors," recalled the coach. "But then we came right back with four runs on four hits and two walks."

The Bulldogs moved ahead in the second inning by scoring twice again, with Jeff Daniels driving in his second RBI of the day.

Tecumseh wasn't finished, however. With a run in the fourth and another in the top of the

seventh, they had slashed the lead. In the top of the 10th they slipped ahead on a walk, an error, a stolen base and a sacrifice fly.

But Chelsea returned the effort in the bottom of the inning. Kevin Webb walked while pitch hitting. He was forced out at second when John Mann got a single. John moved around on Doug Reed's bunt, leaving men on first and second. Wade with an error on his hit, Mike Nadeau got to base and Mann scored.

The two men left on were joined by Craig Alter who got hit by the pitch. With the bases loaded, Jeff Daniels drove in his third run, Doug Reed, who touched home for the winning score. The Bulldogs had won, 8-7.

This victory was followed by the disappointment of being eliminated, Monday, from district competition at a pre-district game on the home diamond. Jackson Northwest drummed the Bulldogs out of the running with a 15-4 massacre.

This means Chelsea will not be part of the district tournament held here, June 2.

The tenor of the game was set early when Jackson made eight runs in the first inning on five hits and three Chelsea errors. "They are a seasoned, good hitting team that really attacked the ball," said Genske. "We fell apart."

Although Chelsea kept slipping in a run every now and then, it was nothing against a team that boasted four players that with three hits each. Chelsea's only dependable performer was Jeff Daniels who had two singles for his three times at bat.

That defeat was all too reminiscent of Dundee's hey-day at Chelsea Friday, May 18. Chelsea gave Dundee its second win in the

(Continued on page eight)



CITIZENSHIP IS IMPORTANT at all ages. The Kiwanis Club encourages good citizenship even in the 7th grade by awarding their first citizenship awards at that age. The winners, shown here with Kiwanians, are in front from left, Susan German and Jeffrey Kiel from the 7th grade; Kim Brown, 8th; Lisa Hennrichs, 8th; Howard Salver, 9th; and David Alber, 10th, and David Klemer, 11th.

In the back, Dr. Gorton Riethmiller, president of the Michigan State Board of Education; Sharon Schiller, 10th; Nancy Gorman, 11th; Karen Sullivan, 12th; Steve Worden, 12th and Julius Black and Superintendent Charles Cameron. Other recipients of the honor not pictured are Anthony Houle, 8th; David Alber, 10th, and David Klemer, 11th.

Early Copy Iced for Holiday Week Edition

Because of the Memorial Day holiday, the display advertising deadline for next week's Chelsea Standard will be Saturday, May 26, at noon. All other newspaper copy should be in as early as possible. We will be open all day Saturday.



WILLOW RUN INVITATIONAL. Kneeling in front are co-captains Don Conklin and Mark Policht. In the front row, from left, are Skip Fortik, Bob Wenk, Dan Shirilla, Roger Policht, and Jim Powers. In the back row are Keith Cockerline, Mike Fouty, Victor Steinbach, Chris Rabbitt and Coach Pat Wade. (See story on page three.)

Road Commission Chairman Ray Koch Retiring June 30

Raymond L. Koch, chairman of the Washtenaw County Road Commission, has announced his plans to retire as of June 30. An open house to honor this long-time champion of the citizens' "right to know" will be held at the Road Commission office on Zeeb Rd., Sunday afternoon, June 10.

As a member of both the Washtenaw Road Commission and the Washtenaw County Board of Park Trustees, since 1951, Koch has repeatedly insisted on public hearings at the local level, though they are not required by law, to insure public participation in the various phases of planning and construction of the expressways around Ann Arbor.

Koch's resignation was accepted with regret by the Board of Commissioners May 18.

Koch's 41 years of public service

includes memberships in the Ann Arbor Township Board, the Ann Arbor Citizens Safety and Traffic Council, the County Department of Public Works, the Administrative Committee of the Southeastern Michigan Transportation and Land Use Study, the Inter-County Highway Commission, and the County Road Association of Michigan.

In 1968, Koch helped organize and was chairman of the first County Road Commissioners Seminar and has served on this program committee ever since.

While serving on these many committees and commissions, Koch has owned and operated a dairy farm.

His retirement from the County Road Commission leaves a 1½ year unexpired term that will be filled by a commission appointee.

Uncle Lew from Lima Says:

DEAR MISTER EDITOR:

The fellows discussed the matter up one side and down the other at the country store Saturday night, and when the motion final got to the floor a split vote sided with the candidate that was running for reelection as mayor of Los Angeles on the stay-away ticket. Speaking for the majority, Clem Webster said usual the best thing a politician can do for his country is be in another country.

The fellow that wanted to keep the mayor's job built his campaign on all the trips he had took to

Ireland and Africa, not to mention a recent station in Switzerland. He pointed out to the folks how a slick everything run in the mayor's office with him gone, and he allowed that all he wanted was a chance to keep up the good work. Clem said they is a lot to be said for that kind of a platform.

For instant, went on Clem, a fellow that's in Africa can't be back home in his state legislature drawing up a bill that would put a tax on excess sleep or someone. No congressman in Zanzibar can be in Washington voting for an increase in grants to retired generals that want to retire peace time use of surplus hand grenades, went on Clem, and a judge that's attending a world conference in Paris ain't likely to hand down a ruling that wimmen is eligible for aid for their younguns afore they're born.

Actual, broke in Zeke Grubb, strange things happen to people that get elected, and getting out of the country ain't all a cure. Zeke said he had saw a piece in the paper about the "Congressional Handbook" that lists all the free services and privileges that come with the job. A seat in Congress is equal to a throne of them crowned heads in Europe, went Zeke's words. A Congressman gets 16 people to help in his office and \$157,000 to pay 'em; he gets \$42,500 for himself and everything, including 31 different health plans, to be sure he is well took care of.

Ed Doolittle was ruled out of order when he rose to speak in favor of keeping congressmen on the job. The fellows agreed they were giving Ed executive privilege from testifying on account he voted for Nixon. Bug Hookum said from what he's reading in the papers about the Watergate case it looks like everybody with any connection to Nixon has got the no-talk privilege.

Practical speaking, Mister Editor, I got sympathy for our Congress. Them congressmen got a heap of decisions to make on everything from how to run their next campaign to trying to get part of the moon put in their district so they could visit there. I see where folks in Swain County in North Carolina still can cuss legal. The legislature voted down a bill to put Swain with all but one other county where it's agin the law to cuss.

Maybe, Mister Editor, voting agin some bills is as good as staying away.

Your's truly,
Uncle Lew.

Success that's permanent usually comes slowly, if at all.

Howell Livestock Auction

Mason 677-8941
The Wise Owl Says Ship to Howell.
Phone 546-2470. Bim Franklin

Market Report for May 21

CATTLE—

Good to Choice Steers, \$45 to \$48.50
Good-Choice Heifers, \$42 to \$44
Real Holstein Steers, \$40 to \$42
U.C.-Std., \$39 and down.

COWS—

Heifer Cows, \$38 to \$40
U.C.-Commercial, \$35 to \$38
Carrier-Outlets, \$31 to \$35
Dry Beef Cows, \$36 to \$38

BULLS—

Heavy Boldens, \$40 to \$44
Light, Common, \$39 and down.

CALVES—

Prime, \$65 to \$70
Good-Choice, \$60 to \$65
Heavy, \$50 to \$55
Cull & Med., \$50 to \$70

FEDERS—

800-600 lb., Good to Choice Heifers, \$40 to \$48
400-700 lb., Good to Choice Steers, \$35 to \$38
300-500 lb., Holstein Steers, \$48 to \$55
500-800 lb., Holstein Steers, \$40 to \$48
Common-Med., \$38 and down.

SHEEP—

Woolled Slaughter Lamb:
Choice-Prime, \$35 to \$38.50
Good-Utility, \$32 to \$35
Slaughter Ewes, \$8 to \$16.50
Feeder Lambs, all weights, \$26 to \$32

HOGS—

200-220 lb., No. 1, \$38.50 to \$39.50
200-240 lb., No. 2, \$38 to \$38.50
240 lb. and up, \$37 to \$38
Light Hogs, \$36 and down.

SOVS—

Fancy Light, \$32.50 to \$33
800-600 lb., \$32 to \$35.50
500 lb. and up, \$31 to \$32

Boars and Stags—

All Weights, \$30.50 to \$33

Feeder Pigs—

Per Head, \$28 to \$34

HAY—

1st Cutting, 50c to 70c
2nd Cutting, 70c to 90c

STRAW—

Per Bale, 30c to 60c

COWS—

Tested Dairy Cows, \$400 to \$550
Tested Beef Type Cows, \$350 to \$450

'Come and see our Expansion Program underway'

INVERNESS INN

Your Innkeepers: Matt and Marge
13996 North Territorial Rd. - North Lake

YOUR FAVORITE MEALS
SHRIMP, CHICKEN & FISH DINNERS

BEER - WINE - LIQUOR - PIZZAS
LUNCHEON SPECIALS

Featuring "This, That & the Other Thing"
Friday Evenings

Established 1871 The Chelsea Standard Telephone 475-1371

Excellence Award By Michigan Press Association
1951-1952-1960-1964-1969-1970

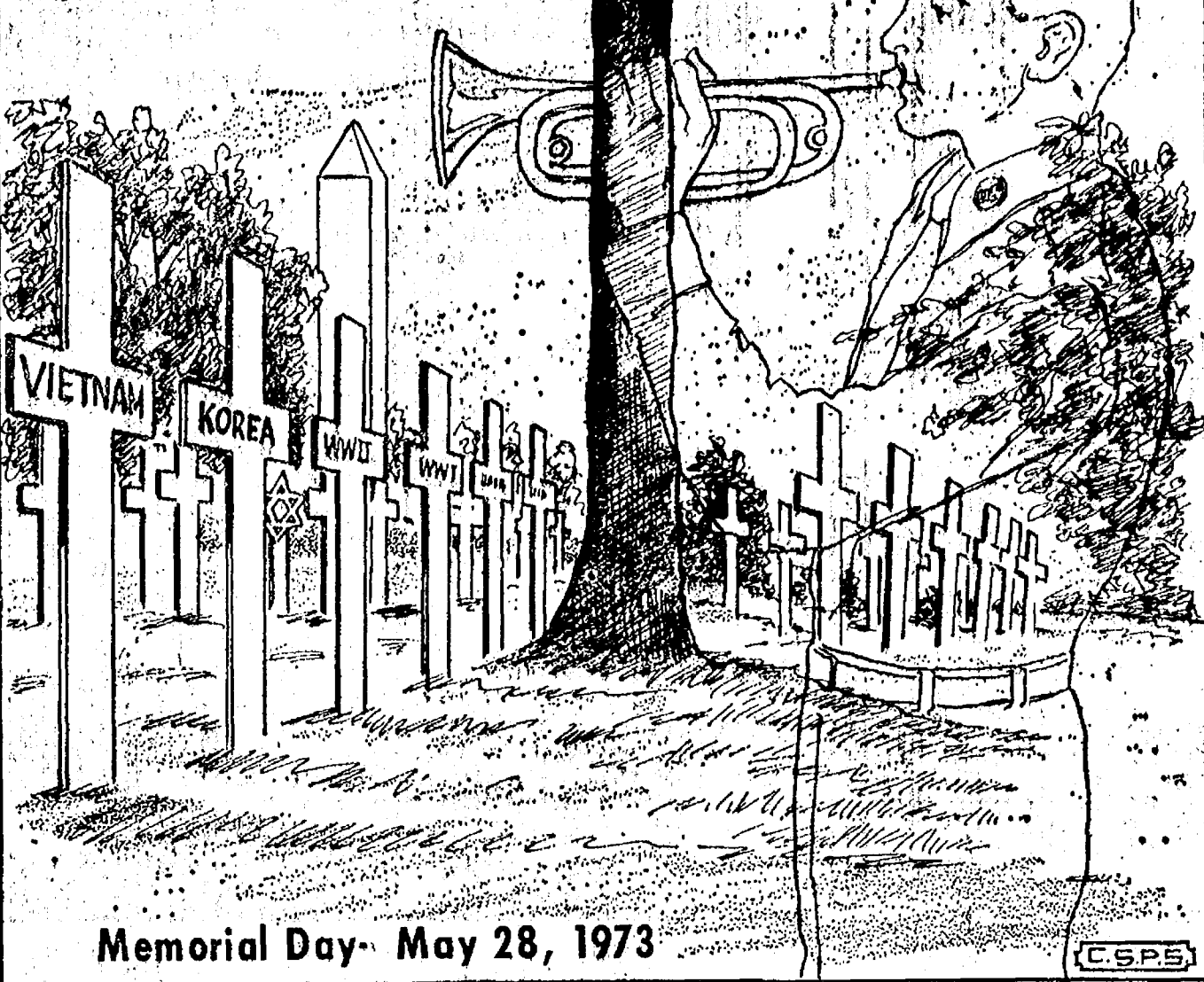
Walter P. Leonard, Editor and Publisher

Published every Thursday morning at 800 North Main Street, Chelsea, Mich. 48118, and second class postage paid at Chelsea, Mich., under the Act of March 3, 1879.

Subscription Rates (Payable in Advance)
In Michigan: One Year \$4.00, Six Months \$2.25, Single Copies \$.15
Outside Michigan: One Year \$6.00, Six Months \$3.50, Single Copies \$.20
Service men or women, anywhere, 1 year \$4.00

MEMBER NATIONAL ADVERTISING REPRESENTATIVE: MICHIGAN NEWSPAPERS, INC. 257 Michigan Ave. Detroit, Mich. 48226

LEST WE FORGET...



Memorial Day- May 28, 1973

MICHIGAN MIRROR

By Elmer E. White, Secretary, Michigan Press Association

Pay Cut Questionable

A group of irate citizens has been busy the past year circulating petitions around the state calling for a constitutional amendment to cut back the pay of members of the legislature.

The proposal would set a base pay of \$15,000 and require a vote of the people to raise the amount above that.

The idea has been met with a very receptive audience in numerous places. Since the legislature is kept when people want something from it, this presents a chance to "get" all 148 members at once.

But the idea bears a closer look. Since it would make a very significant change in state government over the long period.

Basically, legislative salaries represent only a drop in the bucket of state government spending. The budget for the state for the coming fiscal year will total more than \$5 billion when all taxes, federal money and other revenues are added up. Legislative salaries will total less than \$3 million—only six one-hundredths of one percent of the total budget.

Indeed, legislative salaries make up less than one-sixth of the legislative budget, which tops \$19 million.

So a cut in salaries, even if they were completely abolished, would have little effect on the budget or on taxes.

Then there is the question of what effect the forced cut would have on the legislature. Would it produce better legislation of better legislators? The answer has to be no.

Now, \$15,000 a year is nothing to sneeze at. Most Michigan families live on less than that. But it is less than many people make, and if the highest quality of person is going to be expected to serve in the legislature, he or she can't be asked realistically to take a financial bath to do it. It's the old truism about getting what you pay for.

At \$15,000 a year, the lawyers

and other professionals would either quit altogether or spend less time on legislative work. In other words, they'd either leave altogether or spend less effort in order to make more money on the outside. Few can be expected to serve for little money for long out for public spirit.

It might be true that some members of the legislature wouldn't be worth the money if they had their check cut in half. But many put in long hours and do not get rich.

If people are truly upset with what the legislature does, they can show it at the next election by defeating their state representative or senator. It's not as if members were locked in for life.

The salaries now are set by the State Officers Compensation Commission, which showed last November that it is responsive to how

Washtenaw 4-H Models Will Show Fashions

Six area 4-H's modeled their home-sewn garments at the Ambassador Restaurant in the Hilton Inn Tuesday. The girls were among 23 county 4-H's modeling, all of whom won awards clothing at the Spring Achievement in March.

Dexter models were Karen Balduz, Jill Waggoner, and Jean Lindemann. Models from Chelsea were Alicia Noah, Elizabeth Bush and Holly Hoffmeyer.

The girls, ranging in age from 9 to 18, were selected from a variety of categories including party dress, sportswear and knitting. All of the garments have been made by the 4-H'ers.

"PENNY BLACKS"

The British "Penny Black," the world's first adhesive postage stamp, issued in 1840, is neither the most expensive nor the rarest stamp sought by collectors today. A number of the 64 million "Penny Blacks" that were printed survive in stamp albums.

people think around the state by not raising the legislative salaries at all. It was a bit ironic when that happened, since some of the legislators who conceived of the SOCC had thought of it as a means of raising their salary without being blamed for it.

It boils down to the fact that the movement to cut salaries is based on emotions. It is an emotional response to what is perceived by some to be misconduct or lack of productivity by the legislature.

Everyone has a right to get emotional. Everyone has a right to vote against an incumbent if he wants to throw the incumbent out. Everyone even has a right to try to petition a pay cut, proposed into the constitution.

But the Constitution is the foundation for principles of government. It is hard to change, and it should be. It isn't really the place for emotion, and it isn't the place to specify salary levels.

Pamphlets Prepared

An intensive information campaign designed to inform every Michigan driver of the effects of the no-fault insurance law which goes into effect Oct. 1 has been launched in the state.

It is a co-operative effort financed by the 283 companies doing auto insurance business in Michigan. They are paying on the basis of their percentage of the total auto insurance written in the state.

Every owner of a motor vehicle licensed in the state will receive a pamphlet with information about the law along with his vehicle registration application when it arrives later this year.

The pamphlet is being prepared by the Michigan No-Fault Insurance Advisory Council appointed by Insurance Commissioner Russell E. Van Hooser. The council also is preparing a folder to be distributed by insurance agents and radio and television spots and newspaper ads.

JUST REMINISCING

Items Taken from the Files of The Chelsea Standard

4 Years Ago...

Thursday, May 22, 1969—

Chelsea village president Hal Pennington traded visits with the mayor of Pinconning, Monday, in observance of Government Day, part of the Michigan Week. Mr. and Mrs. Pennington and Village Administrator Frederick Weber and his wife met a delegation from Pinconning in Flint, the half-way point between the two towns, for breakfast before arriving in their exchange towns.

V. O. Johnson will replace the Rev. John Fall as administrator of Chelsea Methodist Home, June 1, according to an announcement by the Board of Trustees. The Rev. Fall, who began as assistant administrator in 1963 and became administrator in 1966, has been 275-bed, Franklin, Ind. United Methodist Home. Johnson, who has been assistant and business manager of the Oklahoma Methodist Manor, Tulsa, for the past five years, began duties as associate administrator, March 15, to insure a smooth transition.

The Chelsea track team claimed their biggest victory of the year, Saturday, as they ran away with the State Regional III Class "B" trophy on the local track. Chelsea piled up 54 points, trailed by Michigan Center, a distant second with 33 points. 15 other teams in Class B were left even farther behind.

Chelsea patrolman Bruce Siebert was awarded a citation by the Village Council upon recommendation of Police Commissioner, Steve Clark, for work performed April 9. The citation lauds his alertness, good judgment and courage. Siebert apprehended two escapees from Ionia State Prison who had stolen two cars.

Melvin E. "Red" Lamb, Chelsea barber who received a kidney transplant in December, 1968, died Tuesday at the Cleveland Clinic after a series of illnesses that began last October.

nickels" have been placed in all retail establishments in and around Chelsea and will officially become legal tender tomorrow and will remain so throughout the celebration.

At the Chelsea Community Fair Board meeting last week, Everett Van Riper, president of the Fair Board, extended an official invitation to all village residents to join with the farmers and take part Saturday in the biggest hay ride ever held.

24 Years Ago...

Thursday, May 28, 1949—

Evelyn Westfall and her brother, Arthur Westfall, both of 2510 Hayes Rd., were injured early Thursday, when their car, driven by Miss Westfall, rolled into the ditch and turned over after colliding with a bus. Miss Westfall, employed by Central Fibre Products Co., and Mr. Westfall, employed at Chelsea Products, were on their way home from work.

Chelsea police today announced the results of the first six weeks of the accident prevention program aimed at reducing accidents due to vehicles in an unsafe condition. They announced that 73 traffic violations had been stopped and that checks had discovered 11 cars with faulty brakes and 11 with defective lights.

The 22nd annual reunion of the Sylvan Center school was held at the schoolhouse Sunday, May 22. Schuyler Foster presided at the meeting in his capacity as vice-president because of the absence of the president, Oscar Kaimbach. He called on William Hatley of Jackson, to give a prayer and lead in singing the song "America."

On behalf of the Crooked Lake Club, Mrs. J. Vincent Berg presented the fire chief, Thomas Young, with \$36.47 toward the Resuscitation Fund. This club, which originated about 30 years ago, is composed of the few families then

spending their summers at the lake. Some of the families whose names can be recalled are Main-singer, Allmendinger, Mather, Reiker, Scharder, Kraph and Burg. The Union Memorial Service will be conducted at the Congregational church, Sunday, May 29, at 10 a.m. The Rev. Matthew J. Bets, administrator of the Chelsea United Methodist Home will deliver the sermon.

34 Years Ago...

Thursday, May 25, 1939—

Mr. and Mrs. P. M. Broesamle entertained the Western Washtenaw Farmers' Club at their meeting Friday evening and a co-operative supper was served to 45 members and friends.

Henry Schneider, who has just returned from a three-week vacation trip through the south and east, gave an interesting review of his travels at the Kiwanis meeting on Monday evening. His tour took him through Ohio, Kentucky, Tennessee and Virginia, up to Washington, D. C., and on to the New York World's Fair.

Mr. and Mrs. Martin Merkel celebrated their golden anniversary on Sunday. At St. Mary church high mass was offered by the Rev. Fr. Lawrence Dorr on this occasion. Lilacs and tulips decorated the altars and mass was sung by the children's choir. Mr. and Mrs. Merkel were honored guests at a dinner given at the home of Mr. and Mrs. R. W. Merkel where covers were laid for 35 relatives. Both Mr. and Mrs. Merkel were born in Baden, Germany. Mr. Merkel came of America in 1873 with his parents. The former Mary Doefer was born June 5, 1870, and came to America in 1888. She married Mr. Merkel a year later. They resided for 25 years on a farm near Sylvan Center and for 15 years lived on the Sears farm in Lima township, coming to Chelsea in 1929. They have three sons, Ferd, Henry and Norbert and a daughter, Bertha, all of Chelsea and 10 grandchildren.

Love, unlike desire, is no mysterious, separate thing, but a matter of degree.

WE LOVE GOLFERS

at the
TEE COURSE DRIVING RANGE

465 S. FREER RD.
CHELSEA, MICH.

Take Exit 159 or 160

Open 7 Days from 9 to 9
PHONE: 475-2857



DON'T WASTE
NATURAL GAS.

Bea Rankin is no "pot-watcher"—but her Gas range is.

That's because Bea's Gas range has the Burner-with-a-Brain—the Gas-saving feature that provides the exact amount of heat for every food. So if Bea is busy elsewhere, or just plain forgets, her Burner-with-a-Brain adjusts the heat for her automatically.

Today, Natural Gas does so many things so well—so inexpensively—that we should make sure we don't waste it.

You can help conserve Natural Gas if you'll cover your saucepans for faster cooking, use the lowest heat required for the job, cook one-dish skillet meals occasionally, and use a pressure cooker for steam cooking.

And if your range needs replacing, see the new, efficient, Gas-saving models at appliance dealers or Michigan Consolidated Gas Company business offices.

MICHIGAN CONSOLIDATED GAS COMPANY

We care about your tomorrow.

Real Estate One.

WEED REALTY, INC. ASSOCIATES
CALL US FIRST... BECAUSE WE ARE!

NEW LISTING! This one must be seen inside and out to be appreciated. 3 bedroom home on quiet street with large, well-kept yard and immaculate interior. \$28,500. Evenings call Don Slazinski at 971-5022.

72-2492 NATURE LOVERS, ATTENTION! 40 acres of raw land adjoining a natural pond area. Near Win Schulers in Jackson and a new school. \$48,000. Evenings call Bob Parker at (517) 764-2016.

73-1050 RUN, DON'T WALK, to capture this summer dream cottage. 2 bedrooms, completely furnished on a large lot with access to Portage Lake. It's a real dandy at \$14,500. Evenings call Ed Coy at 426-8235.

73-1150 MOTHER NATURE practiced all of her arts here. This 5.7 acres in the Chelsea school district has an ambulating stream and a rise at the center of the property with a stand of mature hardwoods, \$8,000. Evenings call Bob Myrnel at 663-0122.

73-0401 RECENT PRICE REDUCTION. Words cannot describe this lovely setting on 17 rolling acres with three bedroom house set above your own fish pond. Sheer poetry. \$69,900. Evenings call Don Slazinski at 971-5022.

73-1002 LIVE IN CLOVER—18 acres of it in the Chelsea school district. Look over this horse farm with remodeled home, new garage, and 4 stall stable. Some woods and deep pond on property. \$69,900. Evenings call Gary Lillie at 769-1634.

NEW LISTING! You'll fall in love with this distinctive home on 34 acres with large, two story barn and other outbuildings. Lovely rolling fields and majestic shade trees make it a perfect horse farm. \$97,500. Evenings call Ed Coy at 426-8235.

73-0931 RECENTLY REMODELED tavern with large apartment. Beer & wine license (with possibility of liquor in future), and small kitchen for light meals. Perfect for those looking for a business opportunity. \$68,000. Evenings call Bob Parker at (517) 764-2016.

73-1003 WANT TO BUILD in the country? We have two 10 acre parcels near Saline with more land and a barn available to the man interested in expansion. \$16,000 each. Evenings call Bob Myrnel at 663-0122.

72-2835 YOU COULD BE the envy of all your friends with a custom home built on this 10-acre piece of natural perfection. Pure sandy soil, flowing stream and woods at the rear. Dexter schools. \$20,000. Evenings call Gary Lillie at 769-1634.

Real Estate One.

WEED REALTY, INC. ASSOCIATES

ANN ARBOR
1300 S. MAIN
761-8313

CHELSEA
1196 M-52

475-8693

MEMBER MULTIPLE LISTING SERVICE

Golfers Third in Conference

Chelsea golfers were defeated in three out of four crucial matches last week, but they were able to hold on to the third ranked position in the Southeastern Conference. Conference competition closed with the league meet at Novi, Monday.

In a double dual, played at South Lyon last week, Chelsea linksmen lost to Milan, 173-180, but defeated their hosts, 180-196. Mark Policht and Mike Fouty were the medalists with scores of 43. Jeff Schmidt compiled 48 in nine holes and Dan Shirilla stroked a 46.

On Thursday, a week ago, Chelsea traveled to Saline to play a double dual with Saline and Dexter. At the time, both Saline and Dexter had two losses. Chelsea had three.

Victories over these opponents would have sent the three teams to the conference meet with comparable records, giving Chelsea a shot at the top slot, but it was not Chelsea's day for upsetting the status quo. Both teams defeated the Bulldogs. Saline scored a 163 to Chelsea's 177 while Dexter was in the middle at 171.

Scorers for Chelsea were Mark Policht, 42; Mike Fouty, 42; Jeff Schmidt, 48; and Dan Shirilla, 48. Those rivals, Saline and Dexter, were again a few strokes ahead of Chelsea at the conference meet, Monday, at Novi. Saline placed first for the second year in succession and Dexter was in second. Chelsea's third place in the meet

B. Guster Scores Chelsea's Only Points in State Track Meet

The Chelsea contingent to the state track meet at Flint Western this past Saturday, May 19, was able to pick up five points. They were earned by the efforts of Bruce Guster.

Guster flew to his best distance of the year in the long jump, covering 21'6". This brilliant performance earned him fourth place in the state.

In the meet, which awarded eight places in each individual event and 10 in the relays, Bruce was the only Bulldog to score, but

was followed by Milan, Dundee, Novi, Lincoln and South Lyon in that order.

Leading Chelsea scorers at the league meet were Dan Shirilla with an 85, Mark Policht with an 86, Don Conklin at 90 and Chris Rabbitt at 91.

Chelsea golfers end their season Friday at the Willow Run Invitational Tournament.

several of his teammates came heartbreakingly close.

Rick Sweeney just missed placing in the high jump by clearing the opening height of 5'10" on his second jump. Had he done so on his first jump he would have tied for sixth place.

Similarly, Tim Lancaster came close to making 13' in the pole vault. If he had, he would have placed.

Other Chelsea qualifiers competing were Bill Tate who failed to make the opening height in the high jump and Craig Coltre who did not make it out of the preliminaries in the low hurdles. Bruce Guster was seen again in the 440-yard dash but his time of 51.9 was not good enough to place in the top eight.

A number of Chelsea athletes have qualified for the Jackson Jaycee Honor meet on Wednesday, May 30 at Michigan Center. This meet, which will start at 6:45, will bring together the eight best individuals and relay teams in each event in the Jackson area.

Usually 25-30 schools of all classes compete. So far, all of Chelsea's relay teams have qualified, as has a member in each field event, the 100, 220, 440 and low hurdles.

Increased pork supplies expected during 1973 will be a result of farmer's response to favorable hog prices during most of 1972. Increased farrowing during the winter months is continuing through the spring quarter with a corresponding increase in the number of hogs going to market. Seasonally heavier marketing promises more attractive pork values for consumers.

Few people have the courage to resist the crowd, even when they know the intent of the group is not right.



JOLTING EXPECTATIONS is one way modern art makes the viewer see objects in a new light. Visitors at Tuesday evening's art show at the high school, which featured works in a variety of mediums, had a chance to test their way of seeing the world on everything from a giant hamburger to a realistic looking pizza to Rod Abdon's project which

combined human and mechanical elements. Shown here discussing the works are, from left, Miss Laurie Hartman, Cheryl Cameron, Miss Cathy Moore, Mrs. Larry Cameron and Mrs. Terry Kamler. The projects shown, which included the heroin deformed baby in the foreground by Peggy Krail, are works from the third year art class.

Beach Boys Conduct I-M Mat Tourney

An intramural wrestling tournament directed by Pat Clarke, Tom Neumeyer and Richard Barels has been engaging the energies of Beach Middle school boys during their activity period for the past weeks.

The 50 6th, 7th, and 8th graders participating were pared down to the 28 finalists May 15, the tournament's closing date. What the boys lacked in experience was made up for by enthusiasm.

Winning in the 90-pound group was Joe Verway. Bruce Fairbanks was second, David Sine third, and Joe Keiser, fourth. Scott McClain took the top honors at 102 pounds with Pete Feeney, Mike Hogen and Greg Helmer following in that order.

was first, Ernie Hadley second, Ricky Beeman, third, and Jeff Schantz, fourth. Scott Owings topped the line at 130 pounds with Mike Young second, Kelly Alder third and Todd Headrick in fourth place.

The winner at 140 pounds was

Art Display Tonight At Beach School

The art students of Mrs. Beverly Yelsik and Judy Parker will be placing their works on display tonight, Thursday, at Beach Middle school.

Works by 6th, 7th and 8th graders will grace the walls of the art rooms between 7 and 9 this evening. Some will be for sale.

Barry Hagen. George Menge was second, Chris Smyth third and Steve Smyth fourth.

Dale Headrick took first at 155. He was followed in the standings by Charles Minix, Scott Powers and Bill Paul in second, third and fourth places, respectively.

King of the heavyweights is Leon Brown. Arnold Heim was runner-up in that group of big boys with Mark Smyth in third and Victor Verchereau in fourth.

Umpires Needed

The Chelsea Area Recreation Council is seeking individuals willing to umpire for this summer's softball games. Those interested should call Ken Larson at 475-2650.

MILK makes the meal But Good!

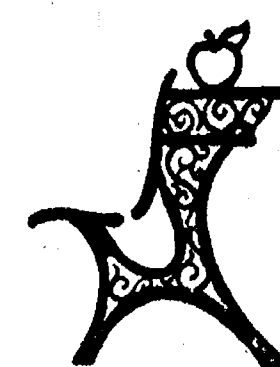


Serve glassfuls of goodness every day

Milk's a treat that can't be beat at breakfast, lunch or dinner. Make sure there's always plenty on hand by arranging for our regular delivery service.

Hickory Ridge Farm Dairy
Stockbridge, Mich. Phone (517) 851-3000

Hallmark
Cards for Graduates



Hallmark
FATHER'S DAY

Cards and Gifts
Sunday, June 17



CHELSEA CARD & GIFT SHOP

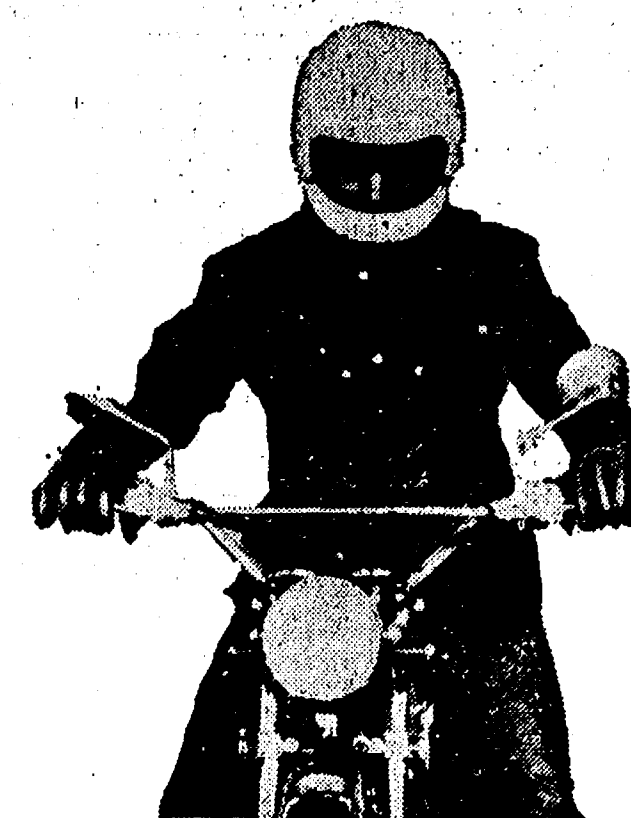
116 S. Main St.

Phone 475-7501

SUZUKI-ANN ARBOR

4040 WASHTEENAW NEAR US-23 (313) 971-4210

If you're ready to get into cycles, we'll teach you all we know. If you already know everything, stop by and tell us all about it.



Full-Line Supermarket

BEER - WINE - LIQUOR
LOTTERY TICKETS
MARATHON GAS PUMPS
2-CYCO GAS PUMPS
AUTHORIZED
FOOD STAMP STORE

Jiffy market
Big Enough To Serve You . . . Small Enough To Know You!

Open 7 Days A Week
7 a.m. to 10 p.m.
Corner Sibley & Werker Rds.
PHONE 475-1701

Sale Prices Effective
Thurs., May 23 thru Sun., May 27

OPEN MEMORIAL DAY TOP VALUE STAMPS - GUARANTEED SATISFACTION - COURTEOUS SERVICE MEMORIAL DAY

MEMORIAL DAY
picnic food values



Food Values that Spell... **PICNIC**

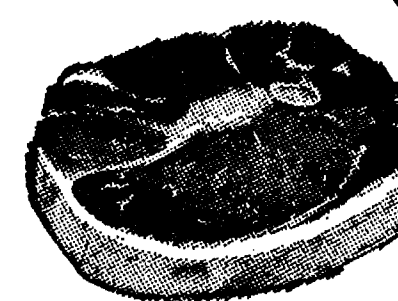
FRESH
EGGS
U.S. Grade A
All White
Medium Size
49¢ doz.

HAM
AGAR CAN
5 Lbs. **\$4.99**
P.S.—Don't tell Our Butcher LIMIT ONE

PEPSI-COLA'S 75th ANNIVERSARY
1898 - 1973 SPECIAL
8 pack 12-Oz. Cans **98¢**
12 pack 12-Oz. Cans **\$1.45**

Michigan SALADS
BAKED BEANS
POTATO
MACARONI
COLE SLAW
15-Oz. Pkg. **49¢**
Excellent Quality

BAR-B-QUE SPECIAL
CHECKERBOARD
Rock Cornish GAME HEN
1 1/2-Lb. Average
U.S.D.A. Grade A **98¢ ea.**



U.S.D.A. GRADE CHOICE

ROUND STEAK

Whole . . . **\$1.29**
Top . . . **\$1.39**
CUBE STEAK **\$1.39** RUMP ROAST **\$1.39**

KOOL AID
Assorted Flavors
0.24 Oz. **5¢ pkg.**

JIFFY MARKET IS CHELSEA'S MARKET
SERVING THE PEOPLE OF CHELSEA IS OUR BUSINESS
WE CARE — WITH WEEKLY SPECIALS AND TOP VALUE STAMPS — WE SHARE

KLEEN MAID White Bread
4 1/4-Lb. Loaves **89¢**

FREE — TOP VALUE STAMPS
One Michigan State LOTTERY TICKET
MAY 23 THRU MAY 27
WITH EACH \$25.00 FOOD ORDER
Not Including Liquor, Gas, Beer, Wine, or Cigarettes

RISDON'S HOMOGENIZED MILK
gal. **89¢**

1-LB. PKG. ECKRICH **SMOKIES . . . \$1.19**
1-LB. PKG. HYGRADE **BALL PARK FRANKS 89¢**

Want Bad Breath?
Smoke Cigarettes

CIGARETTES Your Choice Carton **\$3.39** All Brands and Sizes

Destroy Your Health
Smoke Cigarettes

FIG BARS
FIRESIDE
2 lb. pkg. **29¢**

CHEST TYPE
COOLERS
HAMILTON SKOTCH
White Foam **99¢**

2-CYCO GAS
POWER MOWERS
OUTBOARD MOTORS
TRAIL BIKES
A Chelsea Product

BEER
Several Brands
AT LOW LOW LOW PRICES

Charcoal Briquets
20-Lb. Bag **\$1.29**
Charcoal Lighter
One Gallon **89¢**

BACON - LETTUCE - TOMATO
A SPECIAL SANDWICH
MEADOWDALE SLICED **BACON . . . lb. 89¢**
CALIFORNIA HEAD **LETTUCE . . . 39¢**
BEAUTIFUL HOTHOUSE **TOMATOES lb. 49¢**
OPEN MEMORIAL DAY

Ads
Taken
Till 1 p.m.
Tuesday

USE ACTION-PACKED WANT ADS

Just
Phone
475-1371

WANT ADS

The Chelsea Standard

WANT AD RATES

PAID IN ADVANCE—All regular advertisements, 75 cents per line per week or less, each insertion. Count each figure as a word. For more than 25 words add 3 cents per word for each insertion. "Bold" ads or box number ads, 50c extra per insertion.

CHARGE RATES—Same as cash in advance, with 25 cents bookkeeping charge if not paid before 1 p.m. Tuesday preceding publication. Pay in advance, send cash or check and save 25 cents.

DISPLAY WANT ADS—Rate, \$1.40 per column inch, single column, width only. 8-point and 14-point light type only. No borders or boldface type. Minimum 1 inch.

QUARTERS OF THANKS or MEMORIALS—Single paragraph style, \$1.50 per insertion for 50 words or less; 3 cents per word beyond 50 words.

COPY DEADLINE—1 p.m. Tuesday week of publication.

REAL ESTATE FOR SALE

DESIGNED FOR CONVENIENCE and for carefree family living. 3-bedroom ranch. Partly brick. Lifetime roof. Rec room, attached garage. Call for an appointment to see it.

COUNTRY RANCH—Just 4 years old. 3 bedrooms, 1½ baths, glassed and screened patio, large garage. Fishing and swimming privileges. \$37,500, terms.

ONE ACRE building site. Wooded. Scenic view. Don't miss it. Also a smaller lot with swimming privileges.

CLARENCE WOOD
BROKER
646 Flanders St.
Phone 475-2038

G. G. HOPPER
Building Contractors
Gregory 498-2148

A-1 USED CARS

'72 PINTO 2-dr.
'71 THUNDERBIRD
'71 FORD station wagon
'70 LTD hardtop
'70 FALCON 2-dr.
'69 LTD 2-dr. hardtop
'68 FAIRLANE 2-dr.
'67 FAIRLANE Station Wagon.
'66 MUSTANG 2-dr.
'66 MERCURY 2-dr.

Check Our New
Triangle Truck Lot
At intersection of M-52
and Old Manchester Road

'72 FORD ½-ton pick-up.
'72 CHEV ½-ton pick-up.
'71 FORD ¾-ton pick-up.
'70 FORD ¾-ton pick-up.
'69 FORD ¾-ton pick-up.
'68 FORD ¾-ton pick-up.
'65 FORD ¾-ton utility.

PALMER FORD
SINCE APRIL 1912
Ask For:
JOHN POPOVICH
DON MOORE
LYLE CHRISWELL

FOR SALE — 1966 Dodge Sport-van. Clean. Also, Austin A-40, excellent body, needs short block. Ph. 475-2667.

WANT ADS

MINI-BIKES, used, \$29.95 to \$59.95. Coffman's Sports Center, 1011 Lansing Ave., Jackson, Mich. Open 9-9, Sunday, 12-6.

Annual Spring Used Car Bonanza

All cars thoroughly reconditioned and specially priced.

DON'T MISS THIS SALE!
DEMO

'73 DODGE Polara Custom 2-dr. hardtop, 380, auto., p.s., air cond., vinyl roof, rear speaker, 3,000 miles. Save

Previously Owned Autos

'73 GOLD DUSTER, 225, auto., p.s., AM radio, white sidewalls, low mileage. \$2595

'71 PLYMOUTH Fury III 2-dr. hardtop, 318, auto., p.s., p.b., air cond., vinyl roof. Sharp. \$2195

'70 MAVERICK 2-dr., auto., AM radio. \$1295

'70 CHRYSLER Newport 4-dr. sedan, 383, auto., p.s., p.b., rear defogger. \$1495

'70 CHALLENGER RT 2-dr. hardtop, 383, auto., rallye cluster and suspension. \$1595

'69 PLYMOUTH Fury III 4-dr. sedan, 318, auto., p.s. p.b., vinyl roof, low mileage. \$1295

'69 CHRYSLER Newport 2-dr. hardtop, 383, auto., p.s., p.b. \$995

'69 PLYMOUTH Sport Satellite 2-dr. hardtop, 318, auto., p.s., vinyl roof, buckets. \$1195

'69 CHRYSLER New Yorker 4-dr. full power, air cond., vinyl roof. \$1295

Transportation Specials

'67 PLYMOUTH Fury station wagon, 318, auto. \$495

'67 FORD Falcon station wagon, V-8, auto. \$295

'66 DODGE Coronet 2-dr. hardtop. \$295

'64 FORD 4-dr., V-8, auto., p.s. \$195

'63 CHEVY ½-ton pickup, 6-cyl., 3-speed. \$495

CHEVY 21-ft. Camper Van, 6 cyl. engine, 3-speed trans., bunks, dinette. \$395

'72 24' CORSAIR travel trailer, used 45 hrs., like new, completely equipped including add-a-room. \$4495

Cry-Star Traveler

21-ft. mini motor homes now in stock. Completely equipped.

Village Motor Sales, Inc.

IMPERIAL - CHRYSLER
DODGE - PLYMOUTH
Phone 475-8661

1185 Manchester Rd., Chelsea
Hours: 8 a.m. to 6 p.m.
Tues. thru Fri. Until 9 Monday.
9 a.m. to 2 p.m. Saturday

7 - 1973 ZIG-ZAG, \$48.50—Small paint damage in shipment. In walnut sew table. Sews stretch material. No attachments needed as all controls are built-in. Makes buttonholes, sew on buttons, and makes many fancy designs. Only \$48.50 cash or terms arranged. collect 482-8822, 9 a.m. to 9 p.m. Electro Grand. 49

1972 SUZUKI TC90. Excellent condition. Ph. 475-1685.

WANT ADS

FOR SALE—3M dry copy machine for \$150. Has been on maintenance contract since new. Excellent A-1 condition. May be seen at Palmer Ford, 222 S. Main St., Chelsea. Phone 475-1801. x467

6-FAMILY YARD SALE — Antiques and clothes, toys, dishes, furniture, etc. 4094 Patterson Lake Rd., Hell, Mich. (Across from the restaurant and follow arrows.) May 24-25-26, 9 a.m. to 6 p.m. x49

CHELSEA
475-8628

ON THE LAKES

HALF MOON LAKE—Just listed, 3-bedroom home, 1½ baths, full basement, 2½-car attached garage situated on over one acre with access to Half Moon Lake.

JOSLIN LAKE — Air conditioned, well maintained year around home in excellent condition with lake access. Great for retirement.

CLEAR LAKE—Beautiful 3-bedroom home overlooking Clear Lake, with family room, full basement, 2-car garage plus carport. Beach house and steel dock included. Chelsea schools.

CHELSEA SCHOOLS

VILLAGE ESTATE — 2.9 acres, brick ranch, 2 fireplaces, and many extras. Among magnificent surroundings.

CLOSE TO VILLAGE—Carpenter, 3 bedrooms, new kitchen fabulous family room, screened porch.

LOVELY BI-LEVEL — Near elementary schools. 3 bedrooms and 2 baths.

COLONIAL IN THE WOODS—4 bedrooms, 2½ baths, formal dining room, lots of extras. A true country setting.

BRICK AND REDWOOD—A lovely 5-bedroom home with all the extras of a truly gracious home situated near the village on a nice wooded corner lot.

ACREAGE

98 acres—farm.
5 acres—\$4,500.
10 acres—\$14,500.

12 acres—With pond, \$17,500.
10 acres—Wooded, \$17,000.

ROBERT H.
THORNTON
JR., P.C.
323 S. Main Realtor 475-8628

Helen Lancaster 475-1198
John Pierson 475-2064
Bob Riemenschneider 475-1469
Bob Thornton 475-9957

It's SANDAL TIME
for Children and Ladies
The selections are good
at
DANCER'S

LISTINGS WANTED
Your business shall be greatly appreciated.

Member of Ann Arbor
Board of Realtors
Multiple Listing Service.
Burke Fitzgerald
REALTOR
Off.: 426-3690
Res.: 878-6803

Headquarters for RED WING WORK SHOES

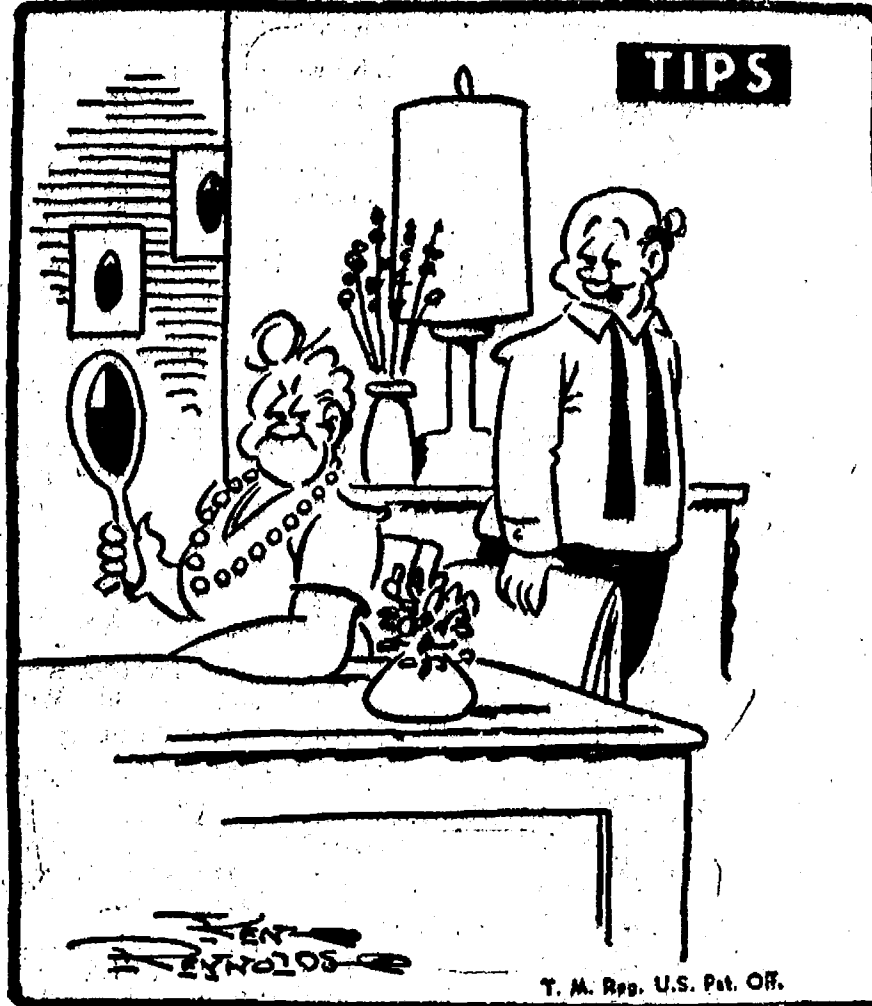
Foster's Men's Wear

Sand Gravel

KLINK
EXCAVATING
Bulldozer - Backhoe
Road Work - Basements
Trucking - Crane Work
Top Soil - Demolition
Drainfield - Septic Tank
Trenching, 5' up

Industrial, Residential, Commercial
CALL 475-7881

ELECTROLUX
VACUUM
CLEANERS
SALES and SERVICE
JAMES COX
Ph. 428-2931 or 428-8221
Manchester



"If you ask me, the beauty salon in the Standard Want Ads did a pretty good job - considering!"

WANT ADS

Low Low
Down Payment
On New
GOLD KEY
MORTGAGES

For information ask your Realtor or call 768-8300.

Ann Arbor Federal
Savings
Equal Housing Lender

FOR RENT — 1-bedroom house in the country. Couple preferred. Call 475-7693.

Howell Town & Country, Inc.

8 VACANT ACRES on country road near Gregory. Sensible restrictions, \$8,900. VA 1495.

10 VACANT ACRES on black-top road, Stockbridge schools, \$10,000 VA 805.

NICE BUILDING SITE at Cedar Lake, 160 ft. on water, \$5,500. VL 1218.

61 FEET ON WATER at Rush Lake, good building site, priced at \$9,950.

120 FEET ON PORTAGE LAKE, or 30,830 sq. feet, trees, a beautiful beach, vacant. \$25,000. VL 300.

FIELDSTONE 4-bedroom home on 6 lots. Natural gas, beautifully landscaped, outdoor grill, waterfront lot. ALH 1476.

3-BEDROOM HOME, near golf course, 2 lots, completely remodeled inside, fireplace, family room, \$24,900. LHP 1293.

HIGHLAND LAKE, 2-story, 2 lots, mature trees, 2 baths, 2-car garage, and many other features. Occupancy at closing, \$32,900.

Howell Town & Country, Inc.

CARLIE WIEDMAN
Local Representative
Phone 878-3177
426-3758 evenings

GRASS LAKE

SIX ACRES with a good 4-bedroom ranch style, epic and span, full basement, built-in range and oven, plaster, hardwood floors.

IN THE VILLAGE—An older 3-story brick and frame beauty. All large rooms plastered, oak floors and trim, entry hall, two fireplaces, excellent setting, two-story carriage barn. All in good condition, priced in the mid forties.

WE HAVE an excellent selection of homes at the present time. Give us a call.

Southside Realty
1-517-522-8469

Always at Your Service
on the Double Quick!



Looking for heads-up
auto service? Look no
further. That's us! Always
on our toes to serve you
promptly, efficiently,
courteously!

UNION 76 OIL PRODUCTS

Jim's Union 76 Service
Tires — Batteries — Tune-Ups — Brake Service — Wheel Alignment
PHONE 475-2822

WANT ADS

FOR RENT — Extra nice 8-room upper. Very clean, fully carpeted. Nice for quiet refined lady or couple. Ph. 475-7688.

YOUR NEW HOME

3-bedroom ranch, full basement, 1½ baths, 1st floor family room, 2½-car attached garage. \$39,900 complete with lot and appliances. 30-day occupancy.

CHELSEA
475-2828

HELP WANTED MECHANICS

Blue Cross, uniforms, life insurance, good hourly rate, time and a half at expanding truck and trailer shop.

If you want to get ahead call
663-0521, ext. 35
for interview.

SPECIAL OF WEEK

1971 Dodge Polara 2-dr. hardtop Custom. Air conditioning. 22,000 miles. \$2595

Real Nice Used Cars

1972 PONTIAC Grandville 4-dr. hardtop, air cond. \$3695

1972 Opel 4-dr. sedan, auto trans. Sharp. \$1995

1971 BUICK LeSabre 4-dr. sedan. Air cond. \$2795

1971 BUICK LeSabre 4-dr. sedan. Air cond. \$2795

1970 OLDS Toronado, air cond. \$2795

1970 OLDS Toronado, air cond. \$2795

1970 PONTIAC LeMans 2-dr. hardtop, vinyl top, auto trans. \$1895

1969 LINCOLN 2-dr. hardtop, air cond. \$2295

1969 BUICK Estate Wagon, 2-seat, air cond. \$1995

1969 OLDS Delta 88 2-dr. hardtop. \$1595

1969 PONTIAC 4-dr. sedan \$1395

1969 Ford XL 2-dr. hardtop \$1295

1969 Ford LTD station wagon \$1295

1969 OLDS Cutlass Supreme 2-dr. hardtop, air cond. \$1495

1968 CHEV Bel Air 4-dr. sedan, 49,000 miles. \$995

1968 CHEV Impala 4-dr. sedan. \$795

1967 OLDS Delta 88 2-dr. hardtop. \$695

1967 BUICK LeSabre 4-dr. sedan. \$695

1967 PLYMOUTH Fury III 2-dr. hardtop. \$695

SPRAGUE
Buick-Olds-Opel, Inc.
Phone 475-8664
1500 S. Main St., Chelsea

WANT ADS

PROFESSIONAL painting, interior and exterior. For free estimate call collect 313-227-7057.

CHELSEA

UNIQUE ESTATE LIVING—Village of Chelsea with 10 acres professionally landscaped. Stone and aluminum home, 3,500-sq. ft., 4 bedrooms, den, 2 fireplaces, 3½ baths, 2-car garage.

NEW LISTING—Older remodeled home with 3 bedrooms, new kitchen, nice yard. Family room, dining room. \$32,500.

ADJACENT to state land, with pond, stream and rolling scenic 45 acres makes this an ideal horse farm or year-round family recreation. 3-bedroom home, 2 barns, 3-car garage, storage, 1-bedroom apartment for income.

Lake Homes

CAVANAUGH LAKE, 160' frontage, 3-bedroom year-round, excellent view of the lake. \$36,900.

NORTH LAKE — Beautiful, immaculate 3-bedroom ranch home on the water.

CAVANAUGH LAKE — 4-bedroom home on the water, dining el, family room.

NORTH LAKE—Summer cottage, needs repair. \$14,500.

WANT TO BUILD? Call us for a list of various building parcels, ranging from 1½ to 15 up to 213 vacant acres.

FRISINGER

MULTI-LISTING
Chelsea 475-8681

Evenings:
Herman Koehn - 475-2613
Tina Cotton - 428-7143
Paul Frisinger - 475-2621
Toby Peterson - 475-2718
George Frisinger - 475-2903
Hope Bushnell - 475-7180
Mary Ann Staebler - 475-1432

LIFE GUARD — Minimum age 17. Male preferred. Senior lifesaving necessary. Also maintenance personnel needed for summer, 18 to 24 years. 40 hours per week, starting immediately. Call 475-7245 for appointment.

Special
Lawn & Garden
Hand Tool
CLOSEOUT

The following tools are all by Ames and top quality:

Hedge trimmers \$7.69 \$5.22
Hedge trimmers 3.49 2.33
Hedge trimmers 4.99 3.44
Grass shears 2.99 1.99
Hand trowels .99 .49
Spading forks (4-time) 6.79 4.88
Roto lawn edger 6.99 4.88
Hoes 2.99 1.99
H.D. hoes 4.79 3.33
Mortar hoes 5.19 3.44
Weeding hoes 3.39 2.22
Broom rakes (20-time) 1.19 .88
Fan rakes (22-time) 2.59 1.77
Tooth rakes (14-time) 3.29 2.22
H.D. tooth rakes (14-time) 5.69 3.88
Steel branch cutters 9.99 6.77
Trim saws (36" bow) 5.49 4.11
Trim saws (30" bow) 4.89 3.44
Trim saws (Teflon blade) 4.49 3.33
Hook forks (4-time) 4.99 3.55
Hand cultivators (5-time) 6.49 3.44

Chelsea Hardware

BARGAINS
The Bargain Floor
Is Loaded
1/3, 1/2 and more off
DANCER'S

WANTED—Ambitious couple interested in earning additional \$12,000 next year, no investment. Further information by appointment, call 475-2556.

Sylvan Township

15-ACRE parcel and a 30-acre parcel. Chelsea schools. Excellent building location.

List your property with us for fast efficient service.

R. D. MILLER
REAL ESTATE
Real Estate Broker
475-7311
15776 Cavanaugh Lake Rd.
Chelsea, Mich.

FOR RENT—Furnished apartment in country for 1 or 2 men. References required. 426-4388.

Signs Painted
475 - 7391

SCHNEIDER'S ROCERY

CHOICE MEATS - FINE FOODS

2-LB. 5-OZ. FROZEN MOUNTAIN TOP

Apple Pie 89c

1-LB. PKG. ECKRICH ALL-BEEF

Franks 99c

FRESH

Spare Ribs . . lb. 89c

COUNTRY STYLE

Spare Ribs . . lb. 89c

CHOICE ROLLED

Rib Roast . . lb. \$1.59

LAND-O-LAKES

Butter lb. 75c

88-COUNT CALIFORNIA

Oranges . . doz. 89c

NO 2 1/2 CAN HUNT'S

Peach Halves 2 for 73c

12-OZ. CANS

Pepsi . . 12 pac \$1.49

6-OZ. CAN SEALDSWEET FROZEN

Orange Juice 6 for 99c

Phone
475-7600

Your Store for
Alexander & Hornung
Smoked Meats

121 S. Main St.
We Accept U.S.D.A.
Food Coupons

Your
Confidence

... base it
on our long record
of personal service.

Staffan Funeral Home

WANT ADS

Automotive
Rust Proofing
Cars and TrucksVillage
Motor Sales, Inc.
IMPERIAL - CHRYSLER
DODGE - PLYMOUTH

1185 Manchester Rd., Chelsea
Hours: 8 a.m. to 6 p.m.
Tues. thru Fri. Until 9 Monday.
9 a.m. to 2 p.m. Saturday

WANTED — People interested in second or third income, part time in their own home. Earnings from \$100 to \$1,000 per month. For appointment phone 475-8675 between 4 and 6 p.m.

C—ustom Built Homes
O—h! We Remodel too.
U—can count on us
N—o Job Too Small
T—rim Inside & Out
R—ough-in Only If
Y—ou Want to Finish

S—iding Aluminum, 5" Gutters
I—mmediate Attention
D—ALE COOK & CO.
E—stimates, Free

BUILDERS

Please Call
475-8863

DALE COOK

FOR RENT—Unfurnished second-floor apartment. Stove, refrig., heat furnished. Married couple. No pets, no children. 475-8449 or 475-2018 after 5 p.m.

HOUSE FOR SALE in Stockbridge area. 6-room house, on 2½ acres. Full basement, gas heat in Stockbridge area. Call 784-4987 after 5:30 except on week-ends.

WANTED—Man, part-time, to do yard and garden work at country home, 10 miles from Chelsea. Write Box MA-3, care of Chelsea Standard, Chelsea, Mich.

CALL NOW

SAVE \$\$\$

Greenwood

for

Siding - Remodeling

FREE ESTIMATES

Call

Chelsea 475-2400

WANTED—Someone to stay with elderly lady. Room and board and pay. Write Mrs. Alvin Wahr, Route 2, Chelsea, Mich. 48188. CAR & TRUCK LEASING. For details see Lyle Chiswell at Palmer Motor Sales, 475-1301.

WANT ADS

LEHMAN WAHL

Land Appraisal

Residential

and Farm

17087 West Austin Rd.
Manchester, Mich.
Area Code 813
429-8886

FOR REAL DOLLAR SAVINGS be sure and see us before you buy any new or used car. Palmer Motor Sales, Inc. Your Ford Dealer for over 50 years.

HILLTOP, INC.

Septic tanks: 600 gal. to 2,000 gal., and drain fields, installed to county code. Basements; road building; trenching, 12" and up. Buried oil tanks: 300, 500, and 1,000 gal. Trucking, stone, road gravel, and top soil. Estimates and reasonable rates. Licensed, bonded and insured.

1414 South Main
Chelsea, Mich.
475-2949

LOCAL BUILDER needs summer office help. Must be 18 or older. Send resume to Box MA-6, care of Chelsea Standard, Chelsea.

REDWOOD DECKS by a deck expert. We build fast, no mess, top quality, reasonable price, free estimate. The unusual is no problem to us. Quality craft, 426-8274, fully licensed.

ANTIQUES

WANTED TO BUY

Single items or complete households.

Let us help you clean out your attic, basement, or other storage areas.

We can also help you handle your estate. References will be provided.

House of Antiques

8081 Main St., Dexter
426-8482 or 426-8888

Call any time

CALL FRANK for all your carpet cleaning jobs, morning or week-end. Needs only 3 hours to dry. Only 10¢ per square foot. Phone now for free estimate, 781-4328. All work guaranteed.

New and Remodeling

Residential

Carpenter Contractor

M. A. LAWRENCE

Ph. 475-1106

APARTMENT FOR RENT. Ph. 475-8186. References required.

WANTED TO RENT—Pasture for 40 head Holstein heifers in Chelsea or Manchester area. Call 475-2012 or 428-7525.

WANT ADS

FORMAL WEAR

RENTAL SERVICE

Proms - Weddings - Special Events
6 different colors.

Foster's Men's Wear

21

NOW

Full Time

Complete

Body Shop

Service

Stop in For An Estimate

PALMER FORD

222 S. Main St.
475-1301

FOR RENT—Fair Service Center for meetings, parties, wedding receptions, etc. Weekdays or week-ends. Contact John Wellnitz, phone 475-1518.

HAMMOND ORGAN teachers wanted to teach in their own homes. Call Grinnell Brothers, Ann Arbor, 662-5667.

CLOGGED

SEWER

Reynolds Sewer

Service

We Clean Sewers Without Digging

Drains Cleaned Electrically

FREE ESTIMATES

2-YEAR GUARANTEE

Phone Ann Arbor NO 2-5277

"Sewer Cleaning Is Our Business—Not a Side Line"

Fireplace Builder

Field stone mason, block and brick mason, tuck pointing.

FREE ESTIMATES

Call 475-8025 after 3 p.m.

Patrick Grammatico

PATCHING and PLASTERING.

Call 475-7489.

REPAIR SERVICE for household refrigerators, freezers and garbage disposers. Call Bill, 426-8314.

TRUCK CROP FARM

Family enterprise on busy road to many lakes. 12 acres, 5-bedroom house, modernized, vegetable stand with walk-in cooler and equipment, tractor and irrigation equipment. Priced right. Many other businesses anywhere in Michigan.

Business opportunities broker

JIM WEIR

Phone 683-8789

1615 Wells, Ann Arbor 48104

Member of "WORLD-WIDE"

Business Broker Association

CUSTOM

BUILDING

LICENSED & INSURED

FREE ESTIMATES

TOTAL

CONSTRUCTION

SERVICES

—Residential, commercial and industrial

—Garages

—Remodeling - Additions

—Aluminum Siding

—Roofing

—Trenching

SLOCUM

CONTRACTORS

& BUILDERS

Serving Washtenaw County

For Over 20 years

20700 OLD US-12

CHELSEA

Phone 475-8921 or 475-7611

ROBERT A. ALDER, licensed contractor, residential building, remodeling. No job too small.

18200 Boyce Rd., Gregory, Mich. 48137. Phone 498-2839.

HOUSEWIVES—Part-time work, 3 positions available. Weekly paycheck, earn while you learn. Call personnel manager, 229-0788.

GARAGE SALE—Saturday, May 26, 8 a.m. to 6 p.m. Small furniture, antiques, collectibles, glassware, frames, prints, typewriter, adding machines, records, books, buttons, magazines, appliances, lamps, tools, jewelry, pots and pans, bottles, toys, treasure miscellaneous. 2930 N. Parker Rd., mile west of Dexter off Chelsea-Dexter Rd., second house on left.

475-1301

WANT ADS

ROBERT PATRICK—Building and home improvement, cement work and sea walls. Ph. 475-1077.

Gem Travel Trailers

and Campers

PICK UP COVERS

4"\$100.00

26"\$179.00 and up

Triangle Sales

Chelsea 475-4802

FENCE—Chain-link or redwood fence, all sizes. Material sold for your installation or we will install it. Call (517) 522-4337 for free estimate.

FOR SALE—Roto-tiller, excellent condition. \$75. 475-2929.

VACUUM CLEANERS—Electrolux, authorized sales and service. James Cox, Manchester. Ph. 428-2881 or 428-8221.

CAR RENTAL by the day, week-end, week or month. Full insurance coverage, low rates. Call Lyle Chiswell at Palmer Motor Sales, 475-1301.

Complete

Body Repair

Service

Bumping - Painting

Windshield and Side Glass Replacement

Free Pick-up & Delivery

Open Monday Until 9

CONTACT DON KNOLL

FOR FREE ESTIMATE

Village

Motor Sales, Inc.

IMPERIAL - CHRYSLER

DODGE - PLYMOUTH

Phone 475-8661

Hours: 8 a.m. to 6 p.m.

Tues. thru Fri. Until 9 Monday.

9 a.m. to 2 p.m. Saturday

BEAUTICIAN needed immediately at the Red Carpet Coiffures, corner of Baker and Hudson in Dexter. Clientele waiting. Apply in person.

Quality Evergreens

Spreading and Hicks pines, pyramidal and globe arbor vitae, pfitzers, birch clumps, mountain ash. Flowering crab, Norway and crimson king maples. Dig your own. All State Inspected. Free Estimates.

Faist's

Evergreen Nursery

11362 Trist Rd., Grass Lake

Phone (517) 522-4688

MINI-BIKES—Special, \$99.95, \$119.95, \$129.95 and up. Full line of Ruppis including the 30" and 100 cc's. Also, 3-wheel ATVs from \$189.95 up. Go-Carts, \$189.95 up. Gemini 50 cc, 80 cc, 125 cc. Over 100 bikes in stock, parts and service on all makes. Open 9-9, Sunday, 12-6. Coffman Sports Center, 1011 Lansing Ave., Jackson, Mich. 48137.

HELP WANTED—Steady job for mature lady in retail business. Has more variety than some types. Hours: 8-5, 6 days. Write Box MA-5, care of Chelsea Standard, Chelsea, Mich. Give references and experience, if any.

Siding, Roofing

and Gutters

Reasonably priced and licensed.

Mills

Construction Co.

Call 851-8687

for free estimates.

PROFESSIONAL CARPET cleaning service expanding to Washtenaw county. All sizes and types of carpets cleaned, day or night. Call (517) 522-4337 for free estimate.

THE LITTLE

FLOWER SHOP

3451 Waltrous Rd., Chelsea

Phone GR 5-8508

We Deliver and Wire

Flowers, Corsages, Arrangements and Plants.

Weddings and Funerals.

MODERNIZE

YOUR HOME

Remodeling inside and out.

AWNINGS - PATIOS

Basements, under existing homes or new.

Porches, insulation, room additions, siding, bathrooms, and kitchens, cement work, roofing.

Complete line.

Licensed contractor.

FREE ESTIMATES

BANK TERMS

No money down, bank financing.

(517) 788-6800 Jackson

or (813) 269-2738, Adrian

Seven days a week, 24 hours a day.

Ken McDonough

770 Oak Hill Dr.

Brooklyn, Mich. 49280

475-1301

WANT ADS

ELECTRICAL WIRING of all types New and rewiring. Ph. 428-4855.

EVINGER REAL ESTATE, Alpine St., Dexter. Phone 426-9518.

SEE US for transit mixed concrete, Klump Bros. Gravel Co. Phone Chelsea 475-2530, 4920 Loveland Rd., Grass Lake, Mich. 48027.

TRAVEL TRAILERS—13-ft. and up; 10x65 ft. trailers. John R. Jones Trailer Sales, Gregory, Mich. Phone 498-2655.

WANTED—Carpentry work, any type. Charles Romine. Ph. 475-7474.

FOR SALE—Acre building sites, Chelsea area. Phone 475-2828.

STOCKBRIDGE, 13 acres, commercial, on M-52. (517) 851-8144.

WANTED TO RENT or buy standing hay for the coming season. Ph. 475-2771.

PIANO TUNING, Chelsea and area. Facilities for reconditioning and rebuilding. Used piano sales; reconditioned grands and verticals. E. Ecklund, 420-4429.

ASPHALT PAVING

Driveways - Parking Areas

Landscaping - Site Work

PREVO EXCAVATING CO.

(517) 851-8603 or (313) 453-1027

SHOES FOR REPAIR picked up and delivered every Monday at Parish's Cleaners, 113 Park St.

GET YOUR POOL READY for summer. Complete line of swimming pool chemicals. 10% discount on all over \$10.00. Underground pools installed, complete. Prices start at \$3,200. Hilltop Plumbing, Inc. Ph. 475-2946.

INDIVIDUAL wants 1- to 10-acre building site in Chelsea-Manchester area. 1-689-0396.

ALLSTATE

INSURANCE

AUTO - BOAT - COMMERCIAL

LIFE - HEALTH - HOME

Phone Eves. or Week-ends for

N. H. MILES, Agent

GR 5-8334

WEDDING INVITATIONS—Chelsea Card & Gift Shop, 116 S. Main St. 475-7501.

FOR SALE—Indian cents, postcards, books, foreign coins, Australian opals and other articles. Lawrence E. Guinan, 1571 Sugar Loaf Lake. Call 475-2317.

SEAMLESS ALUMINUM FAYETTES—tougher, lighter and guaranteed. White and colors available. For free estimates, call Rick Kleinschmidt, R. D. Kleinschmidt Co., 428-8886.

ROOFING, siding and carpentry. Cobburn Construction. Ph. 475-1940.

TREE TRIMMING and removal. Call 475-2403.

MOBILE HOME for sale, 10x55. Call 475-2707.

FOR SALE—Hotpoint electric oven; girls' bicycles, one 20" and one 24"; ornate oak double bed and dresser with double beveled mirror. Call 475-8302.

FOR SALE—English Springer, 6 wks. old. Males only. These dogs will hunt birds this fall, retrieve game at 4 mos. Special, first 3 sales 1 kitten free. Gregory (313) 498-2737. Orv Shepherd, after 5 p.m.

USED CARS

and TRUCKS

BOUGHT and SOLD

KETO, INC.

8080 Grand

DEXTER

Phone 426-4635

WEDDING INVITATIONS—Chelsea Card & Gift Shop, 116 S. Main St. 475-7501.

Chelsea

Associated Builders

Custom Building and Remodeling. Over 20 years experience. Call 475-8182.

KNAPP SHOES

For Cushion Comfort

Robert Robbins

475-7282

USED EQUIPMENT

USED BOLENS 1050 tractor with 42" mower, 10" plow and cultivator. Good condition. New snow blade, rototiller or snow blower attachments available at reduced price.

USED SIMPLICITY 4-h.p. Wonder Boy riding mower.

USED YARDMAN 5-h.p. mower.

Chelsea Hardware

HELP WANTED — Housewife? Happy? Have enough money? Farm interviewing! Weekly paychecks without neglect of family. Chelsea location. 436-3798.

WANT ADS

SECURITY

GUARDS

Chelsea, Manchester

WANT ADS

FOR SALE — Man's wet suit, Volt, size 38, Coronet-Kingmaster \$40. Wedding dress, size 14; dinette set, \$15; 1956 Johnson outboard motor, 30 h.p. electric start with battery, good condition. Call 475-7555. x50

WANTED TO RENT — Large country home sought by couple with references. Please call 763-6026 or 662-8241 and ask for Nancy. x49

SILVER LAKE — 3 bedroom year-round home, 2 baths, \$16,500. Tasch Realty. 878-3858. x49

WANTED — Corvair engine, good running condition. Call 475-2110. x49

WANTED — 2- or 8-bedroom house or apartment for responsible adult with 2 children. Before September. References. Write Mrs. J. A. Utter, 207 S. Union St., Parma, 49269. x51

WANTED TO RENT — 3-bedroom house in Dexter-Chelsea area. Immediate occupancy. Call 683-0086 after 6 p.m. x51

HOUSE FOR SALE by owner, 3-bedroom Cape Cod with 3-car attached garage on 2 acres. Fireplace, carpeting, drapes included. 1 1/2 miles north of Chelsea. Ph. 475-7095. x51

MAINTENANCE HELP (Male) for summer resident camp in Chelsea. Will consider high school student. Ph. 475-7679. x49

WANT ADS

FOR SALE — 4-bedroom home with basement; nicely landscaped on 2 1/2 acres; 15 min. from Chelsea. Moderately priced. Broker, 475-7498. x49

FOR SALE, Grass Lake. Lovely lake-front, year-around home. Face brick, enclosed breezeway, attached 2-car garage, 2 bedrooms, hall, ceramic tile bath, large living room, dining area fully carpeted. Large kitchen. Full walk-out basement, partially finished shower and stool for future bedroom or family room. Storms, screens, well insulated, large thermopane window overlooking lake. Winegard TV antenna. Landscaped lot, 100x188. Thirty day occupancy. Deal with owner. 258 Lake Heights, Grass Lake. (517) 522-4185. x49

1963 OLDSMOBILE Dynamic 88. Good transportation \$100 or best offer. Call 475-7092. x49

FOR SALE — 69 Plymouth Fury 440. Must sell. 0300 or best offer. 475-7720. x49

TO BE GIVEN AWAY — 40" electric stove, 4 burners, oven, all in good condition. Call Chelsea Social Service, 475-1581 Tuesday or Thursday between 2 and 5 p.m. x50

SCENIC TRAIL and hayride parties. Call Sharon Hills Ranch for information, 428-9452. x49

WANT ADS

IF YOUR SON or daughter came home Saturday with a three-speed, bronze colored boy's bike, it was stolen from the high school while my son was at driver's training. Dolores Alber, 11 Sycamore. 49

ALUMINUM CANOE for sale, reasonable. Call 475-7322. x49

FOR SALE — 30" gas stove. Good condition. \$30. Ph. 475-8847. x51

PERFECT FOR COTTAGE — Clean, used, standard size electric stove. Best offer. 428-9442. x49

ARCHITECT'S beautiful Half Moon Lake home losing sad owner. Heavenly living near Hell. Unlimited recreation, also excellent investment. 475-2664. x49

WORKING COUPLE desires home in Dexter-Chelsea area. 2-bedroom with year lease preferred, will take anything. Call Mr. Armstrong, anytime, 482-9888. x52

DEPENDABLE TREE SERVICE — Pruning, cutting and removing. Reasonable rates and free estimates. 426-4110. x52

GARAGE SALE — Saturday, May 26, 9 a.m. to 8 p.m. Antiques, old Edison cylinder phonograph, jugs, bottles, guns, knives, etc. 419 S. Main St., Chelsea. x49

1969 DELTA OLDSMOBILE, low mileage, new radial tires, air conditioned, vinyl top, \$1,395, firm. 475-8102. x49

5-YEAR OLD Tennessee Walker gelding, gentle, rides western. Bridle included. 475-2205. x50

HORSE FOR SALE — Gelding, good riding horse. Call 475-2539. x49

THREE HORSES for sale. One large Palomino gelding, one small black and white paint gelding, one medium light tan paint mare. Phone 475-1925. x50

FOR SALE — 1 acre, 5-bedroom house, remodeled. New ceiling, fully equipped kitchen, new wiring, new furnace, aluminum windows. 5 miles from Chelsea. Leo A. Guinan, broker, 19925 Waterloo Rd. 475-2471. x49

HELP WANTED — Live-in Housekeeper, man, woman or couple. Move for home than wages. Call early mornings, 475-7991. x49

FOR RENT — 2-bedroom, furnished apt. Heat included. No pets, no children. Mrs. Conrad Hafner, 225 W. Middle. Ph. 475-8074. x49

HI neighbor! Tried Blue Lustre for cleaning carpets? It's super! Rent electric shampooer, \$1. Daner's. 49

WILL BE MOVING to Chelsea in a week or so. Will need babysitter in our home. Call Ypsilanti 482-2410. x49

NORTH LAKE CO-OP is still accepting registration for pre-schoolers for this fall. Call now and enroll your 3-, 4- or 5-year-old. Experienced teacher fun program. 475-7388 or 475-1337. x49

YARD SALE — Antiques, curio cabinets, buffet, table, chest, misc. 6520 Clear Lake Rd. West of Chelsea. May 25 through May 28. x49

WANTED TO RENT — Large farmhouse with barn, some acreage. Four high school college students, parents, three horses. Chelsea schools. 475-7159 after 6 p.m. x50

PAINTING DONE — Interiors of all kinds, in Dexter, Chelsea, Manchester area. Call 475-2646 any time ask for Steven Knickerbocker. x49

To remove rubber heel marks from floors, wipe the spots with kerosene, turpentine, mineral spirits or floor oil.

Sign-Up Date For Summer Swim Program

Just as the nice weather is beginning, the Chelsea Recreation Council is announcing the beginning of sign-ups for this summer's swim lessons.

As in the past, the lessons will be taught in three two-week sessions at Half Moon Lake. The number and level of classes in each session will depend on the number and ability of youngsters who want lessons.

The first session will begin June 25 and go until July 6; second session, July 9-20; third session, July 23-Aug. 3.

Director of the program, Jim Tallman, who is starting his fourth season as head of the program, will be enrolling youngsters on a first come, first serve basis, starting immediately.

The only cost will be a small fee for transportation to the lake each day.

To register, call Tallman Monday and Tuesday, between 4 and 5:30 p.m.; Wednesday and Thursday, between 4 and 8:30 p.m. or Saturday and Sunday between 9 a.m. and 8:30 p.m. His number is 475-7068.

Tallman suggests that prospective swim class participants sign up early to insure their choice of sessions. The director will be on vacation from June 12 until the start of the first session on June 25 so registration should be completed before he goes away.

Tallman also reminds local children that recreational swimming at Half Moon for all interested children is being arranged by the council from 12:30 until 2:30 as in the past. This arrangement will encompass the same six weeks as the swim classes.

The bus taking the swimmers will leave the high school circle at 12:30 and make stops at the site of the old junior high and at Lanewood before proceeding to Half Moon beach.

The cost for the recreational swim is 35 cents for transportation.

There is no need to register for this activity, which also begins June 25, but children should be at the three stops by 12:30 p.m. each day. Tallman will answer questions during the times listed above.

Gertrude L. Richert Hospitalized After Being Struck By Auto

Gertrude L. Richert of 141 Van Buren, sustained serious injuries, May 8, when she walked into the path of a car driven by Michael Lynn Bristle of 13271 Scio Church Rd. Mrs. Richert, who is 88 years old, remains hospitalized at St. Joseph Mercy Hospital.

The accident, which occurred on S. Main St. about 4:45 in the afternoon left Mrs. Richert with several broken bones and lacerations.

The only way to become financially independent is to spend less than you make.



VISITORS IN THE VILLAGE on Mayor Exchange Day were not only wine and dined but wooed with music. As they began their tour of Chelsea at the Chelsea United Methodist Home, Chelsea High School Band was there in the lovely spring weather to serenade them. Warren Mayer directed the courtyard concert, Monday at 11.

14th District Court Proceedings

Week of May 15-21

In 14th District Court during the week of May 15-21, James Wallace was sentenced to \$100 fines and costs for being a disorderly person.

Louis Ross pled guilty to traveling at 90 mph in a 70 mph speed zone. He was fined \$31.

James Herring pled guilty to driving without a registration or insurance. He was fined \$6.

Ann Daley pled guilty to being in possession of marijuana. Her sentencing was deferred until Nov. 19.

Leon Sehoyan was sentenced to \$150 fines and costs for impaired driving.

Delmus McDaniel pled guilty to driving under the influence of liquor and was fined \$200 fines and costs which must be paid by May 24. His license was taken from him.

Louis Reid pled guilty to driving without an operator's license. He was fined \$75.

Chia-Shun Yih pled guilty to driving at 58 mph in a 35 mph speed zone. He was fined \$37.

James LaFontaine pled guilty to an amended charge of impaired driving. He will be sentenced June 27.

Francis Delatorre pled guilty to traveling at 67 mph in a 45 mph zone. The fines and costs amounted to \$35.

Albert Hafley pled nolo contendere to an amended charge of simple assault. He will be sentenced June 27.

Jennifer Wilson, Dean Wilson and Eric Durham all paid \$50 in costs for dismissed charges of being in possession of marijuana.

Steve Downer pled guilty to both speeding and passing in a no passing zone. He was fined \$61 on the first charge and \$35 on the second.

Elmer Steller pled guilty to driving at 58 mph in a 40 mph speed zone. He was fined \$27.

James Glenn pled guilty to driving at 89 mph in a 70 mph speed zone. He was fined \$27.

James Glenn pled guilty to driving at 89 mph in a 70 mph speed zone. He was fined \$29.

Valerie Parker pled guilty to speeding and to driving without

an operator's license. She was ordered to pay a total of \$47 fines and costs.

Waino Kampanin pled guilty to traveling at 55 mph in a 35 mph speed zone. His fines and costs amounted to \$31.

Donald Adams pled guilty to traveling at 60 mph in a 35 mph speed zone. \$31 fines and costs were imposed.

Margaret Smith pled guilty to driving at 54 mph in a 35 mph speed zone. She was sentenced to \$29 fines and costs.

Roberta Bosowski pled guilty to speeding at 56 mph in a 35 mph speed zone. She was fined \$33.

Roger Guenther pled guilty to speeding at 64 mph in a 35 mph speed zone. He must pay fines and costs amounting to \$49.

Marion Lemen pled guilty to illegally passing a school bus. She was sentenced to fines and costs of \$75.

Gary Simon pled guilty to speeding at 55 mph in a 35 mph speed zone. His fines and costs amounted to \$31.

Charles LaRoe pled guilty to drunk and disorderly conduct and was sentenced to 45 days in jail.

Thomas LeHolm pled guilty to consuming alcohol on a public highway and paid \$50 fines and costs.

April Helfrich also pled guilty to consuming alcohol on a public highway. Her fines and costs were \$50.

Michael Helfrich pled guilty to consuming alcohol on a public highway. He was fined \$50.

Randall Redlin pled guilty to a charge of using marijuana. He was sentenced to fines and costs of \$75 which must be paid by May 25.

Egon Skrandis was fined \$51 for driving at 95 mph in a 70 mph speed zone.

Arthur Kirchoff pled guilty to driving without an operator's license on his person. He paid \$21 fines and costs.

Joseph Rozich of California pled guilty to driving at 75 mph in a 55 mph speed zone. He was fined \$31 fines and costs.

Charmaine Opal pled guilty and paid \$31 fines and costs for driving at 55 mph in a 35 mph speed zone.

Valerie Parker pled guilty to speeding and to driving without

George Roth pled guilty to driving at 55 mph in a 35 mph speed zone. He was sentenced to \$31 fines and costs.

Eric Czapka was fined \$16 fines and costs for disregarding a stop sign and causing an accident.

Deborah Green was sentenced to \$100 fines and costs and 30 days probation for writing checks with insufficient funds. She was given three weeks to pay \$157.33 restitution.

Claude Sterett pled nolo contendere to an amended charge of impaired driving. The sentencing date is May 30.

Kenneth Welter was sentenced to \$29 fines and costs for driving at 54 mph in a 35 mph speed zone.

Russell Luckhardt pled guilty to driving 55 mph in a 30 mph speed zone and paid \$41 fines and costs.

Arthur Maday pled guilty to driving 55 mph in a 35 mph speed zone. He was fined \$51 fines and costs.

Robert Greenfield pled guilty to speeding at 57 mph in a 35 mph speed zone. He was fined \$35 fines and costs.

Michael Cote pled guilty to driving at 55 mph in a 35 mph speed zone. He was fined \$31 fines and costs.

Dessie Hayes was sentenced to a fine of \$75 and a three-day suspended jail sentence for driving with a suspended license.

Watch for the GRAND OPENING of our New Dining Room

DELICIOUS FRIED CHICKEN, SHRIMP and OCEAN PERCH DINNERS

CHICKEN BY THE BUCKET

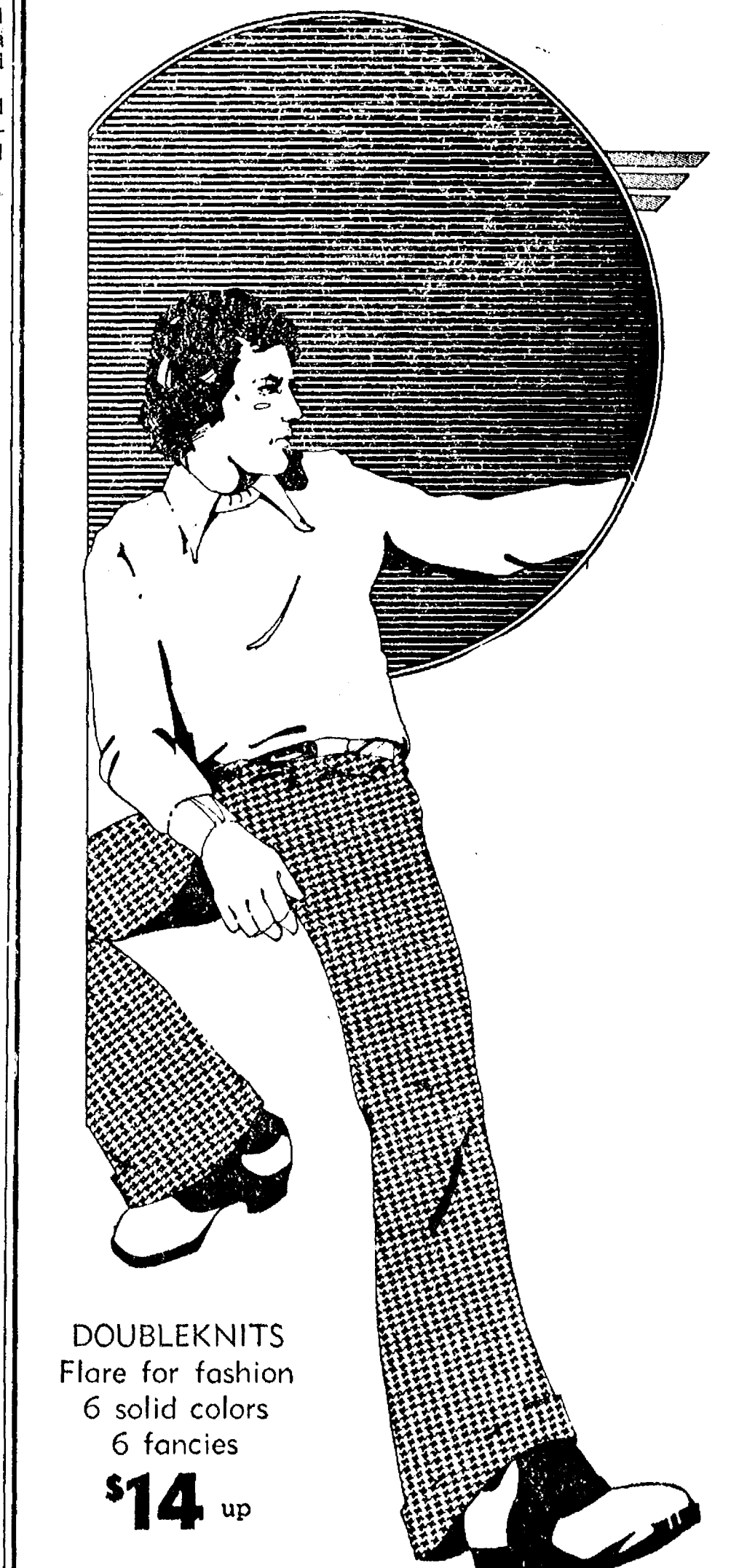
CURB SERVICE and CARRY-OUT SERVICE Six Days a Week, 10 a.m. to 10 p.m. Closed Mondays.

ROOT BEER BY THE GALLON

Also: Sandwich & Fountain Menu

L & R DRIVE-IN

11485 NORTH TERRITORIAL RD. PHONE 426-8668



DOUBLEKNITS Flare for fashion 6 solid colors 6 fancies \$14 up

STRIETER'S MEN'S WEAR

"The Place To Go for Boys Who Know"

Real Estate One.
WEED REALTY, INC., ASSOCIATES
REALTORS

475-8693

1196 M-52, CHELSEA

FEED FOR PROFIT

Profit-Producing Feeds For Livestock, Poultry

In our complete line of Fortified Feeds, you'll find the right feeds to keep livestock and poultry growing, gaining and producing.

Farmers' Supply Co.
Phone GR 5-5511

40,000 4-INCH GERANIUMS
at Same Low Price
75¢ ea. \$8.00 doz.

POTTED PLANTS

Hardy Mums 50c ea.
Tuberous Begonias 75c, \$8.00 doz.

FLOWERING PLANTS

Flowering Plants 39c pak., \$3.50 flat

★ Petunias	★ Salvia
★ Zinnias	★ Snapdragons
★ Asters	★ Carnations
★ Marigolds	★ Alyssum
★ Pansies	★ Delphinium
★ Moss-Rose	★ Ageratum
★ Phlox	★ Dwarf Dahlias

Patio Pots filled with your favorite selections of plants, \$6.00 up

Redwood Combination Boxes \$6.00
Cemetery Urns filled \$7.50 up

VEGETABLE PLANTS

Vegetable Plants 39c pak, \$3.50 flat

★ Tomatoes (Most popular varieties)	★ Broccoli
★ Peppers	★ Sweet Onions
★ Cabbage	★ Egg Plant
★ Brussel Sprouts	★ Sweet Potatoes
★ Head Lettuce	★ Cauliflower

Canadian Peat Moss \$4.00
Combination Pots Geraniums \$4.00 and up

OPEN EVERY DAY from 8 a.m.

Free Local Delivery every day on all items except Annuals.

CHELSEA GREENHOUSE
MEMBER FTD — WE TELEGRAPH FLOWERS ANYWHERE
7010 LINGANE ROAD, CHELSEA PHONE 475-1353

You and Your Mobilehome...

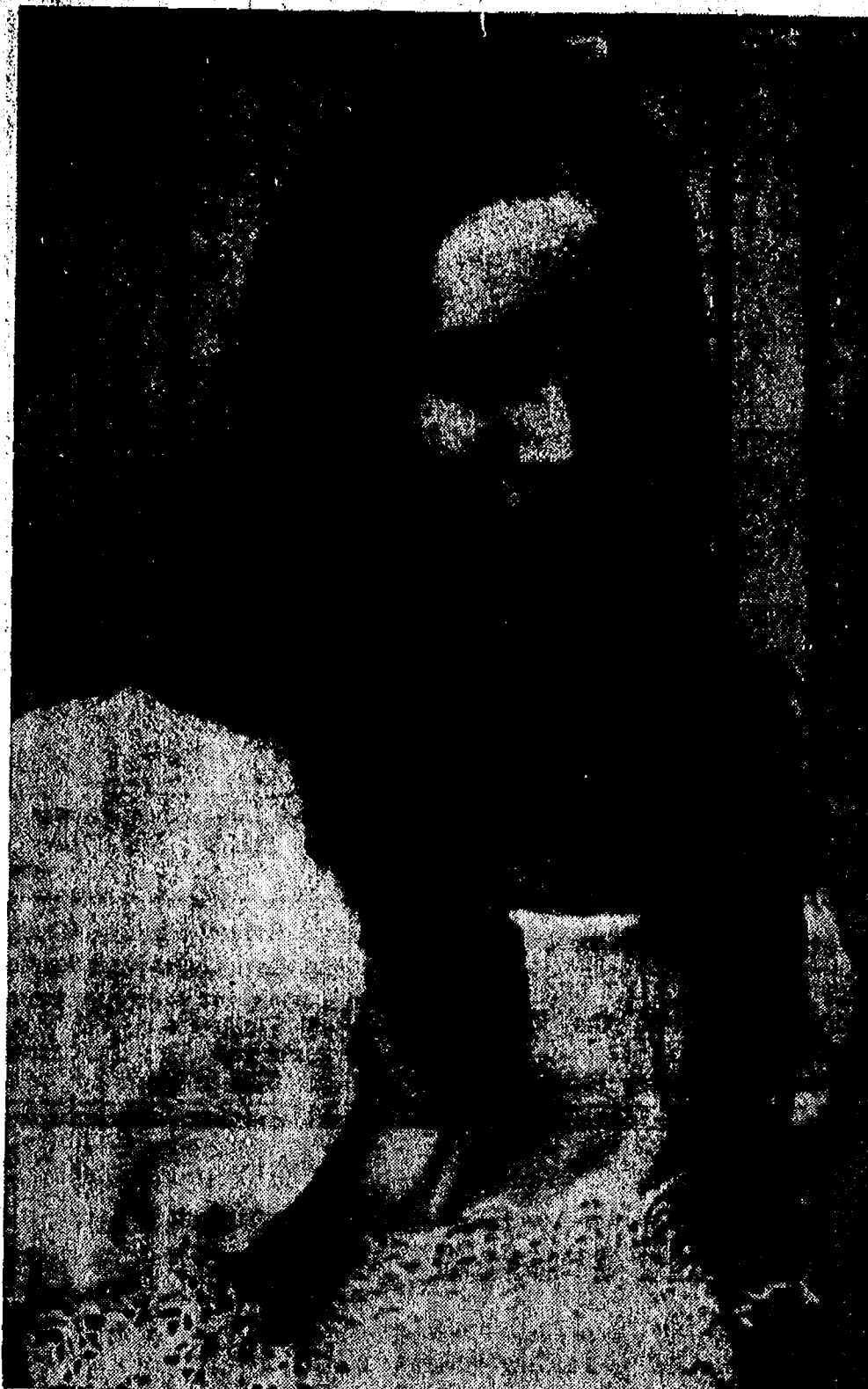
... one of the reasons we're in business ... with savings for properly anchored homes. Snowmobile and outboard motorboat liability protection at no extra cost are automatic Mobile Homeowners policy benefits. Check the facts with Charlie Foster or ...

DAVE ROWE
475-8065

DOUG ROBESON
475-7389

FARM BUREAU INSURANCE GROUP

Farm Bureau Mutual • Farm Bureau Life
Community Service Insurance • Community Service Acceptance



Mrs. Lawrence Robert Bock

Priscilla Clayton, Laurence Bock Speak Vows in Ann Arbor Church

Priscilla Frances Clayton and Laurence Robert Bock were joined in wedlock by the Rev. Erwin A. Gaede at First Unitarian church of Ann Arbor May 12.

The bride is the daughter of Mr. and Mrs. Joseph F. Clayton, 4174 Woodland Dr., Ann Arbor. The bridegroom is the son of Mr. and Mrs. Robert A. Bock of Detroit.

Matron of honor for the afternoon ceremony was Mrs. Joanne C. Martin of Lumberton, N. C. Christine L. Miller of Farrell Rd., acted as bridesmaid. Dennis Fabris, a cousin of the bridegroom, served as best man.

Pianist for the ceremony was William Albright.

A reception for 150 guests at the Ann Arbor Town Club followed the wedding. The couple then left for a one-week wedding trip in Virginia Beach, Va.

Upon returning, Mr. and Mrs. Bock will make their home in Belleville.

The bride was graduated from Michigan State University with a bachelor's degree in English. She is now employed by Xerox-University Microfilms of Ann Arbor. Mr. Bock was also graduated from MSU with a bachelor's degree in the social sciences. He is currently employed by Michigan Bell Telephone in Detroit. Both plan to continue their education.

Elliott - Lukasiak Wed Friday in Garden Rituals

Lucinda Ellen Elliott of 122 1/2 McKinley St. and Thomas H. Lukasiak of 146 Park St. were wed in a garden ceremony, May 18, at the home of the bride's parents, Mr. and Mrs. Carl Reynolds. The bridegroom is the son of Mr. and Mrs. Robert F. Aello.

The wedding party appeared to the strains of the organ played by Patrick Spoonamore, cousin of the bride from Ypsilanti. The couple chose "Theme from Romeo and Juliet," "Wedding March" and "Beginnings" to complement the service conducted by Lionel S. Burger of the Church of Christ, Norwood, O. Forty guests attended.

The new Mrs. Lukasiak wore a long gown of white chiffon over tulle as she spoke her vows. Both the bodice and the sleeve cuffs were trimmed with pink lace roses. A pink satin sash was tied in a bow at her back. Her daisies and pink sweetheart roses were also bound with pink satin ribbons.

Mrs. William C. P. Lounsbury, sister of the bride, of Fletcher Rd., was matron of honor. She was dressed in a semi-sheer cotton gown with pink and white flowers on a green background. She also carried sweetheart roses and daisies.

The bride's mother was outfitted in a long double knit gown of light blue. Her corsage was of sweetheart roses and daisies. A similar corsage accented the long lilac gown of Mrs. Aello.

David Lukasiak, brother of the bridegroom, was best man.

After the ceremony, the guests and the newlyweds enjoyed a reception at the Reynolds home. Donna Reynolds saw to it that everyone signed the guest book while the punch and coffee were served by Mrs. James Spoonamore. Mrs. Spoonamore, aunt of the bride, also made the wedding cake which was served by Mrs. Jeffrey Reynolds of Gregory. The latter is a sister-in-law of the bride.

Mr. Lukasiak who graduated from Chelsea High in 1971 is employed at Arco gas station. He and his bride are residing at 14325 Jerusalem Rd.

Cathy Clark Posts All-A Term at CMU

Cathy Clark, daughter of Mr. and Mrs. William Clark of 28 Sycamore, has compiled an all-A spring term record in her first year at Central Michigan University at Mt. Pleasant. She posted a 3.9 average for the entire year. Cathy is majoring in accounting and computer science.

SENIOR CITIZENS

Senior Citizens May birthday party was held at the Korner House, Thursday, May 17, with a pot-luck dinner. Twenty-five members attended to celebrate the birthdays of Mae Jedele and Anna Labon.

The table was decorated with spring flowers and candles. The central attraction, a birthday cake, was made by Mrs. Lorenz Wenk.

The evening was spent in playing cards.

Committee for the birthday pot-luck was Mr. and Mrs. Lorenz Wenk and Annette Vall.



Mrs. Douglas Alan Moore

Linda L. Wireman, Douglas Moore Are Wed at Methodist Church

Linda Lou Wireman, the daughter of Mr. and Mrs. Frederick Dickins of 302 Garfield St., became the bride of Douglas Alan Moore of Battle Creek, May 19, at the First United Methodist church. One hundred and fifty guests witnessed the ceremony conducted by the Rev. Clive Dickins.

The couple chose the traditional wedding march, themes from "Love Story" and "Romeo and Juliet," and "One Hand, One Heart," sung by Phyllis Maddalena for the music at their wedding.

As she became Mrs. Moore, Linda Lou wore a princess gown of white nylon. Her nylon veil, trimmed in the same tool fluting that adorned the high neck and sleeves, cascaded far below the fluffy long sleeves. She carried roses and baby's breath. Miss Cheryl Ann Pinto, of Kalamazoo, wore a powder blue chiffon gown as maid of honor. In her hair was a headress of baby's breath and roses.

Mrs. Kenneth Larson, sister of the bride, Mrs. Oren Wireman, sister-in-law of the bride, and Miss Sandy Brenske of Saginaw, attended the bride as bridesmaids. They were also dressed in blue chiffon with flower headresses.

A corsage of white roses accented the mother of the bride's costume, a full-length peach colored dress with matching long coat.

Mrs. Frederick T. Moore, mother of the bridegroom, wore a gown of whipped cream crepe. The lilac colored empire styled dress was complemented by a corsage of white roses. Mrs. and Mrs. Fred-

erick T. Moore are from Battle Creek.

Miss Jean-Marie Moore, sister of the bridegroom, and Jeffery Larson, nephew of the bride, were also part of the wedding party. They were flower girl and ring bearer.

Kenneth Larson, brother-in-law of the bride, Oren Wireman, brother of the bride, Dallas English of Frankenmuth, Craig Kennen of Garden City, and Jerry Mazurkiewicz of Grand Rapids, directed the guests to their seats.

The wedding party and guests were invited to attend a reception given by the bride's parents after the ceremony at the Rod and Gun Club. Serving the cake were Mrs. Harold Johnson of Sylvan Rd. and Mrs. George A. Moore of Battle Creek. Karen Kennedy of Saginaw took charge of the guest book.

The couple, with the bride dressed in a blue and white checked suit, left for a wedding trip in Wisconsin after the reception.

Kinder Klub Installs Officers

Modern Mothers Child Study Club had their final meeting of the year May 22 at the home of Mrs. Edwin Brown. Co-hostesses were Mrs. Ronald Harris, Mrs. Max Plank and Mrs. Robert Riemenschneider. Each of the 28 members present revealed her secret pal.

In a candlelight ceremony, the new officers for the coming year were installed. They are: president, Mrs. Max Plank; first vice-president, Mrs. Warren Porath, Jr.; second vice-president, Mrs. Robert Riemenschneider; secretary, Mrs. Russel Pichlik; treasurer, Mrs. Leo Wroubel; parliamentarian, Mrs. William Coelius. Also honored were Mrs. Edwils Vaught as finance chairman and Mrs. Norman Wilson as hospitality hostess. Outgoing president, Mrs. Vernon Otto, was presented a gift.

A two-year project, publishing a cookbook, is well on its way. Recipes have been compiled during the past year and printing will take place soon. These books will be available for sale by the end of the summer. Proceeds from the sale of these books will go to Spaulding for Children, the Chelsea High School Scholarship Fund and the Chelsea Library.

Summer plans also include a picnic for members and their children on July 18.

KINDER KLUB

Kinder Klub members attested their annual spring dinner, Tuesday night, at Tom's Grill in Jackson. After dinner, a short meeting was held at the home of Mrs. Edson Whitaker. The next outing of the Kinder Klub will be Tuesday, June 19, for a hobo picnic for members and their children.

Telephone Your Club News To 475-1371.

At the end of May they will return from the honeymoon to make their home in Kalamazoo where the bridegroom is working on a master's degree while employed with Aero-Hydro Industries. He is a graduate of Western Michigan University with a BS in psychology.

The new Mrs. Moore is a senior at Western Michigan University. She is working on a teaching degree.

Magic Mirror Beauty Salon

Open Tuesday thru Friday
9 a.m. to 9 p.m.
Saturday, 8 a.m. to 3 p.m.

PHONE 665-0816



Mrs. Bing Jacobs

Patricia D. Gilbert, Bing Jacobs Speak Vows in Ann Arbor Church

May 4 was the wedding date for Patricia D. Gilbert, daughter of Mr. and Mrs. Jack Gilbert of North Lake and Bing Jacobs of Bay City. The bridegroom is the son of Mr. and Mrs. Anthony Jacobs.

The Rev. Fr. Tom Sutton of Bridgeport performed the ceremony at St. Thomas the Apostle church, Ann Arbor. Participants were Mrs. Bruce Bronbeck, Mr. and Mrs. Jesse Ruiz, Lauren Kay Blatt, Miss Cynthia Reynolds, Dr.

John R. Willert, the Misses Jacqueline Bailey and Kathy Sumner and Mr. James Boylan.

A reception at Inverness Country Club, North Lake, followed the ceremony.

The couple is residing in Kalamazoo where the bride is completing her senior year at Western Michigan University. The bridegroom, a graduate of the same school, is employed by Gilmore's department store in Kalamazoo.

PLANTS & FLOWERS

- | | |
|------------|------------------|
| ★ TOMATOES | ★ GERANIUMS |
| ★ CABBAGE | ★ SPIKES & FERNS |
| ★ PEPPER | ★ PETUNIAS |
| ★ CELERY | ★ MARIGOLDS |
| | and others |

Please order flowers early
for weddings.

OPEN 9 a.m. to 9 p.m.

LITTLE FLOWER SHOP

PHONE 475-8508
3451 WALTROUS RD. CHELSEA, MICH.

VILLAGE BEAUTY SALON

LORETTA - SANDY
CHERYL - JANICE - CAROL

107 N. MAIN

PHONE 475-1671

OPEN TUESDAY THRU SATURDAY
Evenings By Appointment

The Great Graduation Gift for him and her Bulova Accutron®

The most welcome gift of all is Bulova Accutron... the watch that will keep them on time wherever they go. So precise is the electronically-powered tuning fork movement, that accuracy is guaranteed to within a minute a month.*

See our full selection of Accutron gift watches today. From \$100.



- A. Unique angle-cut case, Champagne dial, adjustable mesh band, \$100.
- B. Stainless steel, silver dial, corfam strap, \$100.
- C. Stainless steel, calendar, mesh bracelet, \$175.
- D. Stainless steel, maroon dial, leather grained strap, \$100.

WINANS JEWELRY

*We will adjust to time tolerance, if necessary. Guarantee is for one year.

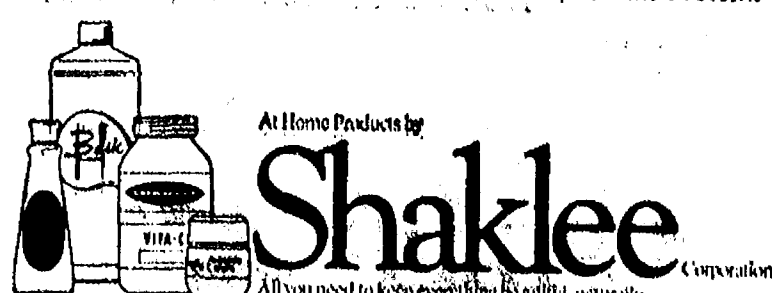
Feel like a million.



You don't have to be wealthy to feel healthy. Shaklee Food Supplements, made the old-fashioned way, are giving thousands a special feeling of self-assurance even millionaires would envy. Today's busy world has increased nutritional problems by improper diet—frequent quick snacks, hurried breakfasts and speedy dinners. Hunger pains may be satisfied by these substitutes for proper diet, but the body's nutritional needs are not.

For generations, Shaklee Food Supplements have been the quality brand. Make them yours. A call to your Shaklee Distributor is all it takes to bring these fine products to your home.

Vita-C, Vita-Lea, Liqui-Lea, Calcium, Vita-E, Instant Protein.



CALL US: 475-1036
SHAKLEE WILL CALL ON YOU

FREE PRIZES! SIGN UP NOW FOR A LA-Z-BOY CHAIR TO BE GIVEN AWAY.

Other Prizes Too!
NOTHING TO BUY

DRAWING 5:00 SAT., MAY 26



OPEN HOUSE WEEK

SAVE 10%

ON ALL STOCK FURNITURE AND CARPETS
THRU SATURDAY, MAY 26.

SEE NEW FURNITURE FASHIONS!
NEW COVERS AND STYLES FOR
SPRING AND SUMMER.

Merkel

FURNITURE and CARPET

MAIN STREET IN CHELSEA PHONE 475-8621
OPEN MONDAY AND FRIDAY NIGHTS UNTIL 9:00
PROFESSIONAL DESIGN CONSULTING

Community Calendar



Beach School Spring Art Show, Thursday, May 24, 7 to 9 p.m. in the art rooms. Works on exhibit and for sale.

Last Beach School track team meet of the season, at home, today, (Thursday), after school.

Junior High Band Concert Thursday, May 31 at 7:30 p.m.

Ice Cream Social June 1; from 6:30 to 8:30 p.m., at South school, with entertainment from Mrs. Dye's music class at South school, and a softball match between North and South schools.

Chelsea High school Baccalaureate, Sunday, June 3, 8 p.m. in the high school auditorium.

1973 Class Night, Wednesday, June 6, 8 p.m. in the high school gymnasium.

Chelsea Co-Op Nursery is now taking applications for the 1973-74 school year. Anyone interested in registering their child should contact Virginia Harvey after 5, at 475-2052.

May business meeting for the Senior Citizens Tuesday, May 29, at the Korner House at 7:30 p.m. Election of officers.

Freedom Evangelical Memorial Cemetery Association annual meeting at the cemetery, May 27, at 3 p.m.

Waterloo Memorial Day observance Sunday, June 3, at 2 p.m. at United Methodist church. Music by Waterloo Band. Speaker, Dr. Gorton Riethmiller.

Cavanaugh Lake-North Sylvan Grange with Nina Wahl, 4747 Clear Lake Rd., June 5 at 7:30 p.m. Bring cake, Jell-O or sandwiches and own table service.

Young Homemakers Thursday, May 24, 8 p.m. at home of Mrs. Robert Heller. Bring three pictures, all should be same. Also don't forget gift for secret pal.

Chelsea Public Works buildings will be open to visitors during Michigan Week, May 19-26.

Senior Citizen Fun Nite every Friday evening at 7:30.

The non-denominational "Light of the World" prayer and healing crusade, every Friday night, 7:30, at the Rebekah Hall on Main St. Everyone welcome.

High school baseball District Tournament, here in Chelsea, June 2. Games begin at 10 a.m.

Sylvan Township Board meeting the first Tuesday of the month, at 7 p.m. at Sylvan Township Hall.

American Legion and Auxiliary hospital equipment available by contacting Don O'Dell at 475-8249.

Lima Township Board meeting the first Monday of the month, 8 p.m. at the town hall.

Chelsea High school Commencement, Friday, June 8, 8 p.m. in the high school gymnasium. Speakers, Patricia Ball and Jeffry Daniels.

St. Paul's Spring Musicale, 7:30 p.m., Sunday in the sanctuary. Everyone is invited.

Open House June 5, at Manchester's Klager Elementary school from 7:30 p.m. to 10 p.m., in honor of Miss Ethel Brown and Robert Sortor, retiring teachers after 24 years at Klager school.

Chelsea varsity baseball, Friday, May 25, Milan, at home; Saturday, May 26, pre-districts.

Singles 25 and Up: Tuesday Night Singles Club annual Hawaiian Luau at the YM-YWCA in Ann Arbor on May 29. Dinner at 7:30; dancing at 9 to the music of Little Joe and his Playboys. Bring a dish to pass.

Special Communication, Olive Lodge No. 156 F&AM, F. C. Degree, Tuesday, May 29, 7:30 p.m.

North Lake Co-Op on North Territorial Rd. needs pre-schoolers for this fall. Experienced teacher, fun program and new facilities. All three, four, and five-year olds welcome. For more information call 485-8388 or 475-1537.

Vermont Cemetery Association meeting at 2 p.m. June 2, at 14675 Jerusalem Rd.

American Legion Auxiliary Past Presidents, Tuesday, May 29, at home of Mrs. Charles Spencer, 754 Flanders. Pot-luck dinner, 6:30 p.m.

Pap tests are free for all area women, Tuesday mornings, at St. Joseph Mercy Hospital, Ann Arbor. Call American Cancer Society office, 688-8857, for appointment.

Hot meal service brought to home of elderly or disabled. Available seven days a week to people living in the Village of Chelsea. For more information call 475-2923 or 475-8014.

Inquiries regarding the Chelsea blood bank may be directed to Harold Jones in the event that Mrs. Dudley Holmes is unavailable, or to Mrs. Pauline McKenna, American Red Cross in Ann Arbor, 971-5300.

A daughter, Rebecca Ann, May 3, to Roy and Carol Sundberg of Chelsea. Mr. and Mrs. Ralph Sundberg of Grass Lake and Mr. and Mrs. James Bosell of Westland are the grandparents.

MODERN YOUTH
Suttor speaks to father: 'I've come to ask for your daughter's hand, the two front rooms and use of the kitchen.'

DEATHS

Reinhold Gebhardt Freedom Township Resident Was Native of Russia

Reinhold Gebhardt of 10110 Waters Rd., died May 18, at St. Joseph Mercy Hospital, Ann Arbor. He was born July 21, 1906, in Gnadenthal, Russia, the son of Karl and Christina Hasenfuss Gebhardt. He married Eleanor Marie Mayer Aug. 15, 1936. She died Dec. 18, 1971.

Mr. Gebhardt had been employed by the Fingerie Lumber Co. of Ann Arbor, retiring in August of 1971.

Survivors include two sons, Karl of Ann Arbor and Albert of Manchester; one daughter, Mrs. Jack (Elaine) Creech of Manchester; one brother, William of Ann Arbor; one sister, Mrs. Clyde (Marjorie) Crossland of San Diego, Calif.; and four grandchildren.

He was preceded in death by three brothers.

Funeral services were held Friday at 2 p.m. at the Bethel church in Freedom township, with the Rev. Roman Reineck officiating. Burial followed in the Bethel church cemetery. Arrangements were by the Staffan Funeral Home.

Mrs. Agnes Hafer

Chelsea Man's Mother Dies May 15 in Ohio

Mrs. Agnes B. Hafer, mother of John Hafer of Chelsea, died May 15, at the age of 83. She was a resident in Valley Manor Nursing Home in New Philadelphia, O.

Mrs. Hafer was born on July 17, 1889, in Mannington, W. Va., where she lived most of her life. She was preceded in death by her husband and a son James.

She is survived by two sons, John of Chelsea and Joe of Bolivar, O., and five grandchildren.

Services were held in St. Patrick's Catholic church, Mannington, W. Va., on May 17. Burial was at Holy Cross Cemetery, Fairmont, W. Va.

Baseball Team Finally Puts It All Together

(Continued from page one)

conference after giving them their first earlier in the season.

Dundee's 13 hits were given free rein by Chelsea's eight errors.

Dundee won, 14-4. Jeff Daniels was again two for three.

These two blistering defeats aside, the Bulldogs are capable of handling themselves admirably on the diamond. Against Novi, May 15, they played brilliantly, according to their coach. "They did everything but win," he said. They lost, 2-1.

During the contest, Perry Johnson gave up only three hits. The winning run came in the second inning on a two base error. The ball slipped through the fielder's legs.

Chelsea had plenty of time to make up for that mistake, but just couldn't come up with a timely hit. Nevertheless, it was one of their finest games all season, according to the coach.

Chelsea's one run, six hits and one error make a better record than Novi's two runs, three hits and three errors. Two of Chelsea's hits came from John Mann.

The team was scheduled for a game Tuesday, but the downpour made conditions less than favorable. The last game of the schedule comes up Friday.

Want a different taste for franks and kraut? Just score the frankfurters and cook. Mix a fourth teaspoon each of oregano and basil with a can of kraut and heat. Pour kraut into casserole and top with franks and a sprinkling of shredded Mozzarella cheese. Bake until the cheese melts and bubbles and the kraut is heated through.

Poor work, completed, is usually better than a brilliant performance postponed.

Mobil-Toons By GLENN



"Guess I'd better re-word that sign!"

You will like our clean rest rooms too.

**GLENN'S
MOBIL SERVICE**
1629 M-52 & I-94
CHELSEA, MICHIGAN
Phone 475-1767
GLENN HEIM
PROP.



MUSIC MAKERS: North school's first graders, under the direction of music teacher, Susan Dye, put on two performances within the last two weeks. Their singing

debut was before their parents, May 15. The encore came a week later when the North school student body came with their teachers, Mrs. Beverly Peebles, Mrs. Mary White and Mrs. Berta Stein.

Musical Group To Appear at Baccalaureate

The Celebration Road Show, a musical group "with a message," led by Gary Miller, former youth minister and professional football player, will be a focal point of the Chelsea High school Baccalaureate service, Sunday, June 3. The service will be in the high school auditorium.

The Celebration Road Show became a reality in June of 1972 when three excited young men from Saginaw decided to thoroughly explore their musical roots. Having been teased with the potential of their music as members of the New Reformation Band, also founded by Gary Miller, they decided to let their music become the medium of their religious message. Since their beginning, they have appeared on college campuses, in Saginaw schools, on the stage at night clubs and in the channel of many churches from the plains of Texas to New York.

Women are said to be the source of most of the world's evils—and lost of its sweetness.

Track Team Wraps Up 2nd Place in Final Conference Standings . . .

(Continued from page one)

Marshall, Howard Salyer, and Craig Coltre.

Another strong performer was

Craig Coltre with a fourth in the long jump. He also took third in the low hurdles with a time of :21.6. Bill Tite was fifth in the

high hurdles at :17.2 and Karl Gauss was fifth in the 220-yard dash in :23.7. The 880-yard relay team of Lee

Ferguson, Bruce Guster, Craig Coltre and Karl Gauss was fourth in 1:38.1, while the 440 relay team of Ishmael Picklesimer, Bill Tite, Lee Ferguson and Tim Lancaster earned a fifth in :46.7.

SUPER "CAN'T-SAG" GATES

IN GALVANIZED STEEL - OR WOOD

	WOOD	STEEL
10 FT.	\$24.50	\$23.75
12 FT.	\$27.45	\$25.95
14 FT.	\$30.95	\$31.50
16 FT.	\$32.95	\$34.95

CHELSEA LUMBER

BUMPER TO BUMPER BODY REPAIR

RELIABLE-ECONOMICAL

You'll Get a Good Deal from Us...

VALUABLE COUPON

20% OFF

WITH THIS COUPON
ON ALL PAINT WORK

(Excluding Material)

OFFER EXPIRES MAY 31, 1973

VALUABLE COUPON

LLOYD BRIDGES CHEVROLET

405 N. MAIN CHELSEA 475-1373

Free ESTIMATE

Mobil-Toons

By GLENN

"Guess I'd better re-word that sign!"

You will like our clean rest rooms too.

**GLENN'S
MOBIL SERVICE**

1629 M-52 & I-94
CHELSEA, MICHIGAN
Phone 475-1767
GLENN HEIM
PROP.

I ELEGANT TRADITIONAL

Dacron wrapped reversible cushions, self-decked coil construction, and soft spring edge of selected reinforced hardwood frame.

II CHARMING "EARLY AMERICAN"

Exposed wood parts of solid silver leaf maple, dacron wrapped reversible cushions, self-decked coil construction and soft spring edge of selected reinforced hardwood frame.

III TRADITIONAL CHARM IN VELVET

Decorative scalloped skirt, reversible dacron wrapped T cushions, self-decked, coil construction and soft spring edge of selected reinforced hardwood frame.

IV WONDERFUL WORLD OF SPANISH

In elegant correlated velvets, the most elegant seating comfort ever experienced. Rich hand rubbed oak finish and decorative rural Spanish arm saddles.

YOUR CHOICE

\$388⁸⁸

Regularly \$449

FROM THE

Townhouse

COLLECTION BY Covey

Your choice of: Traditional, Early American, Mediterranean. All in care free covers, luxurious velvets, soft textured 100% Nylons, 100% Scotchgard linen prints and liveable 100% Herculons.

The Covey Company makes furniture the "old fashioned" way. The skilled hands of the craftsman and his unique knowledge insure unmatched comfort and durability. Seat heights are perfect and provide proper back support. Cushions are soft and hold their shape. Exposed wood parts reflect the look of luxury. Each person involved with the making of this fine furniture knows and cares about The Covey Company's reputation for quality which dates back to 1897.

110 North Main Street
Phone 475-7472
Open Friday Until 9 p.m.

GAMBLES

ATTENTION VETERANS

Memorial Day Parade

Meet at Municipal Parking Lot
at 9:30 a.m.
Monday, May 28, 1973

SPECIAL ON COLORADO BLUE SPRUCE

Ready Dug and Ready for You! 1 to 1 1/2 ft. tall.

\$3.50 ea., 4 for \$11, 8 for \$20

... and that's a bargain!

EXTRA DISCOUNTS ON LARGE QUANTITIES

Plant out your lot or acreage now. Compare our quality and price elsewhere, then you'll know!

HEISE'S TREE FARM

North side of I-194, Exit 162, Fletcher Rd., then turn east on Seitz Drive, 2 miles east of Chelsea.

OPEN 8 to 12; SAT. & SUN., 8 to 3

Want to sell a car? Try a Standard Want Ad!



"YECH" is the first reaction of many students, according to Mrs. Alice Steinbach, when her science classes learn they are going to visit the Sewage Treatment Plant. Thanks to Mel Leach's informed explanations and the impressive facilities of the plant itself, the students go away amazed. Here they observe the outdoor tanks.

Karen Lynne Reynolds Graduates from College May 12

Miss Karen Lynne Reynolds of Chelsea was one of 218 Freed Hardeman College students who graduated from the private liberal arts college May 12.

Miss Reynolds, a pre-physical therapy major, is the daughter of Mr. and Mrs. Carl Reynolds.

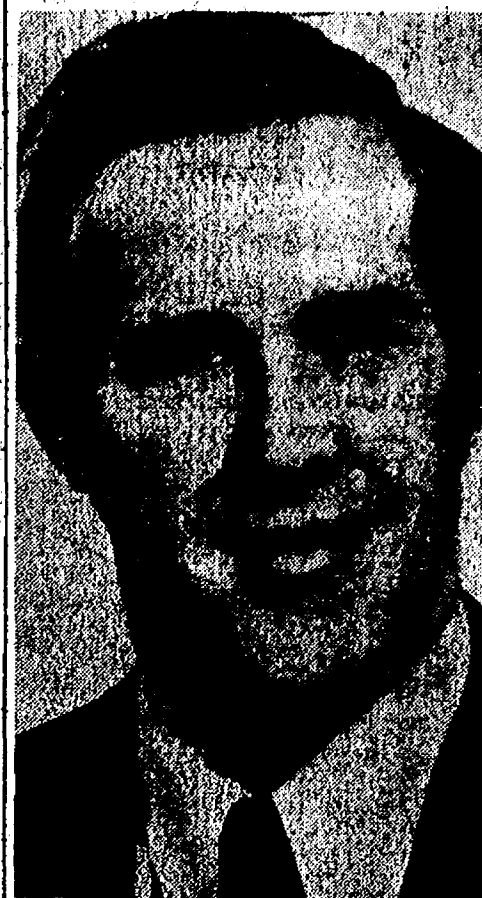
Detroit ranks second in the nation in the commercial value of its exports and imports.

First Graders Entertain With Musical Program

The first graders of North school entertained their fellow students, Tuesday, with a musical program they had perfected for presentation to their parents a week earlier.

All first grade classes participated in the 2:30 p.m. show under the direction of Susan Dye, Music teacher.

Michigan was the first state to provide in its Constitution for the establishment of public libraries.



DAN EWALD

Dan Ewald Promoted By Dana Corp.

Dan Ewald has been appointed Field Service Engineer for Dana Corporation's Power Equipment Division. This division manufactures hydraulic products in Hillsdale.

In addition to his field service functions for the Sales Department, located in Chelsea, Ewald will be responsible for product application, warranty and service assistance for the entire Mobile Equipment product line.

Dan's engineering background and total product knowledge will be assets in his new assignment, which was jointly announced by S. J. Haydock, chief engineer and J. P. Weber, Jr., general sales manager.

The world's largest limestone quarry is located at Rogers City and the world's largest cement plant at Alpena.



SEWAGE TREATMENT may not pop to your mind when you are thinking of interesting conversation topics, but it is, in fact, a scientific feat. Beach school science students have had the opportunity in the last two weeks to learn just how refined that process has become. Here, Mrs. Carla

Linkner, left, and one of her 8th grade science sections begin their tour of the Chelsea Sewage Treatment Plant under the guidance of Mel Leach (rear center) as he explains the electrical control panel. With the switches on the panel he can operate all the pumps throughout the plant.

Junior High Science Classes Study Beyond Classrooms

Classroom education does not have to be completely circumscribed by four walls and a basic textbook. An example of an alternative is the curriculum offered to 8th grade science pupils at Beach school.

Their term-long study of the environment takes their noses out of books and opens their eyes to the world around them. They are given an opportunity to see examples of what they have read about in the Nature Center, in Waterloo Recreation Area, in the village and even in their own homes.

The ecology unit, as taught by science teachers Alice Steinbach, Carla Linkner, and Carol Steiner, begins with an examination of a small habitat such as the pond in the Nature Center. Once the students are sufficiently familiar with the interdependent relationships existing there, they are exposed to a larger ecosystem, the Waterloo Recreation Area.

In previous years, that exposure came through half-day field trips to the park under the guidance of naturalist Tom Hodgson. This year, because of an administrative ban on field trips, Hodgson brought the world of Waterloo to the classroom with a slide presentation.

Last week, the science classes, all nine of them, moved to more populated areas of interest. Water problems became their focus and the water and sewage treatment plants became their destinations. The tour of the sewage treat-

ment plant is a hit every year, according to the science teacher. "The students may think 'yuk,' when they first hear where we're going," says Alice Steinbach. "But they come back excited because it's all so scientific. They go home and find that their parents don't know half as much about it as they do."

Mel Leach deserves the credit for the success of the trips. He takes time to escort each of the sections through the plant, an effort that is greatly appreciated. Tom Dorr does a similar job at the water plant.

Air pollution will be the final area of investigation in the environment study. This will include the problems of controlling emissions which will become clearer to students who visit local factories.

Police Nab Youth

Chelsea Patrolman Robert Browning assisted Jackson county sheriff's deputies in apprehending a stolen car and the thief, May 12. After being alerted by the deputies that Suzanne M. Ossiski had reported her brother, William Ossiski, had taken her car, Browning sighted the vehicle and pursued it.

The car, with William at the wheel, was pulled over by Browning on Old US-12 about 6 a.m. The 18-year-old youth was notified of his rights and turned over to Jackson county deputies who arrived shortly.

The case is being handled by Jackson county authorities.

Mrs. Steinbach says local plant managers have been very helpful in talking with students who pursue the topic for their independent research topic.

All students will participate in an air quality test by taking samples of air in their homes. By comparing the amount of pollution, i.e., solid particles, found in the air taken from one part of the village compared with that of another, the students will learn what factors contribute to air pollution.

Independent papers and projects submitted by students will examine even more aspects of ecology. With the aid of Librarian Mary Ann Paulin, and the resources at Beach Media Center, the students are able to delve into their topic in depth.

While some students will write on parks, others on endangered species and others on political action, and the environment, it is the issues of local interest that draw the most enthusiasm from the students. "They like writing on things that affect them," explains the teacher.

Possible projects included a catalogue of visual pollution in the area with pictures of local eyesores, or pictures of what is good about Chelsea's environment. One student is improving the environment around his father's farm for his project.

"From our 220 students," says Mrs. Steinbach, "We'll get reports on at least 200 different topics." The breadth of interest from students is nearly as broad as the topic itself.

The Money Saving MAYTAG HIGHLANDERS



are here!

They're New.. They're lower cost than before.
They're dependable.

**NEW A107 HIGHLANDER®
FABRIC-MATIC™ WASHER**

**Maytag's Lowest Priced
All-Fabric Washer**

**CYCLES for REGULAR, PERMANENT
PRESS and DELICATE FABRICS**

SAVE

The new Maytag Highlander A107 all fabric washer is comparable to our previous Model A206, but at a new low price.

**NEW A207 MAYTAG
2-SPEED WASHER**

**A207 HIGHLANDER®
2-SPEED WASHER**

**Multi cycles to wash any
fabric just right Automatically**

**No complicated settings...
No guesswork!**

D406 TIMER DRY CONTROL

**NEW HIGHLANDER
HALO-OF-HEAT® DRYER**

**A dryer that lets you set your drying time
includes Permanent Press and Air Fluff drying**

**thrifty
NEW
DRYER**

HEYDLAUFF'S

113 North Main St., Chelsea

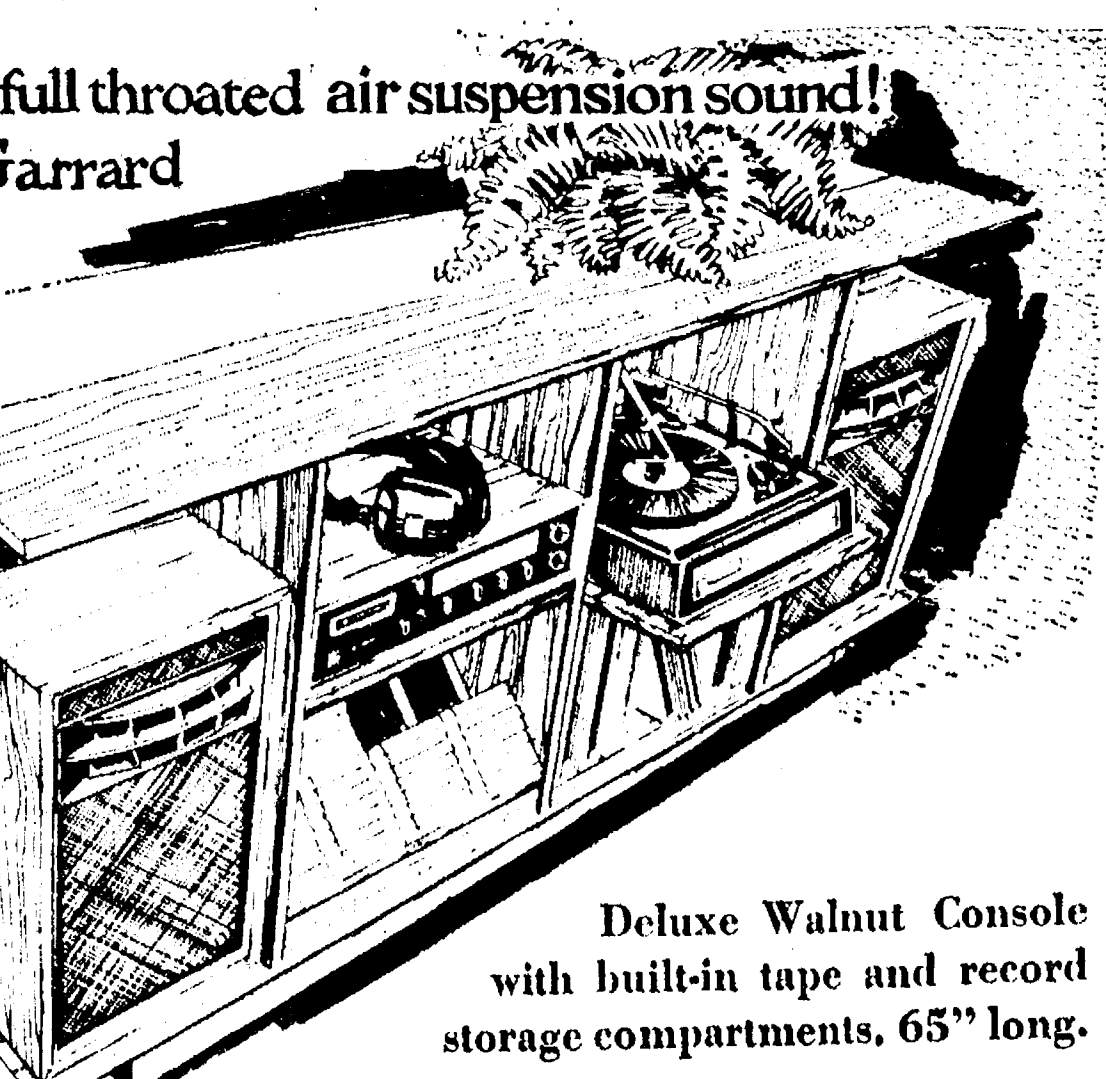
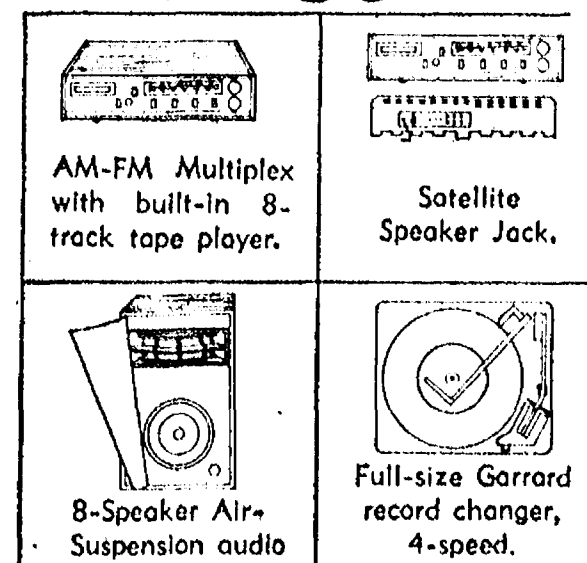
Phone 475-1221

GAMBLES

110 N. Main St.
Phone 475-7472
Open Friday 'til 9

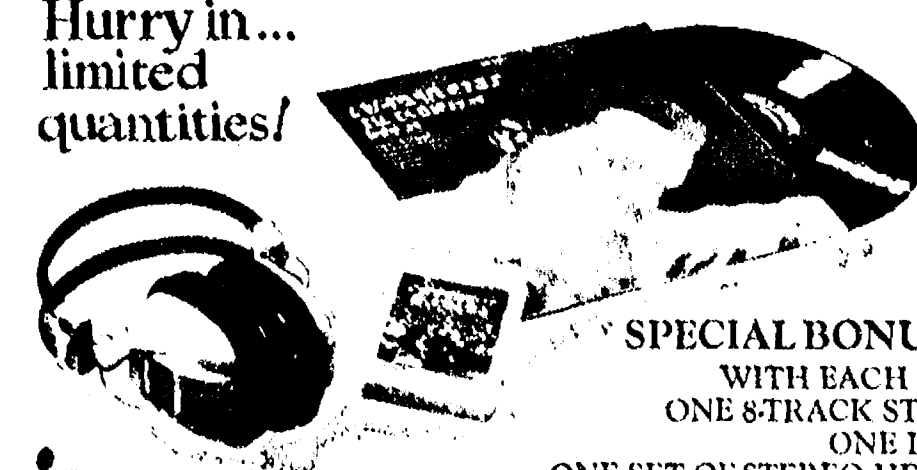
Alive and vibrant...
a miracle of 100 watts of full throated air suspension sound!
ELECTROPHONIC/Garrard
presents a startling, new
total stereo music system

Featuring a Built-in
8-track stereo tape player
Garrard record changer
AM/FM/FM multiplex radio
...completely organized in a
functionally designed
home entertainment center
and built with matching
mar resistant walnut
finish cabinet...at only
\$219.95
SAVE \$60



Deluxe Walnut Console
with built-in tape and record
storage compartments, 65" long.

Hurry in...
limited
quantities!



SPECIAL BONUS OFFER
WITH EACH PURCHASE:
ONE 8-TRACK STEREO TAPE,
ONE LP RECORD,
ONE SET OF STEREO HEADPHONES
ONE SMOKE-TINTED DUST COVER.

Electro-Phonic
CORPORATION OF AMERICA

Tell People You Read It in The Standard!

JOIN

BOB LYONS

at the Organ

MARK IV LOUNGE

Spring and Summer
BOWLING LEAGUES
NOW FORMING

WOMEN'S - MEN'S - MIXED

Call or stop in for reserved spots.

18 Astroline Lanes - Billiards & Air Hockey

MICHIGAN STATE LOTTERY TICKET AGENT

CHELSEA LANES, Inc.

PHONE 475-8141

1189 M-52

CHELSEA

NORTH ELEMENTARY SCHOOL NOTES

FIRST GRADE—

Teachers: Mrs. Peebles, Mrs. Stein and Mrs. White. The culminating activity for our "Better Breakfast" unit was fixing and eating breakfast at school. Our menu consisted of cereal, toast, orange juice, milk, bananas, peanut butter and jelly. Everyone contributed food or utensils toward the meal.

The children enjoyed presenting "A Day in May" musical program for their parents, May 15th. Mrs. Dye, our music teacher, was a big help in this endeavor. The children served their parents punch and cookies in their rooms after the program.

May birthdays are: Troy Brannham, Scott Cheever, Scott Cooper, Tom Hunge, Sole Merkel, Hallie Schmidt, Kelly Barkley, Donald Devoe, Darryl Wetzel, Calvin Carlson, Kelley Chandler, Eddie Johnson, and Laurie McKinley.

Children celebrating summer birthdays: David Lane, Scott Richardson, Joyce Robards, Jenette Rouse, Karl Thurkow, Amy Finkbeiner, Carla Brightwell, Christopher Gallas, Margaret Leisinger, Debbie Morris, Jeffrey Salyer, LeAnn Walz, Shelley Wheaton, Blake Alder, Julie Dunlap, Walter Gray, Scott Poquette, Jackie Schwerin, Richard Slater, Eric Stofflet, and Janett Weber.

SECOND GRADE—
Teacher: Mrs. Morgan. We enjoyed getting ready for the North school art show. Our

class painted what we wanted to be or how we thought we look now. Some of us did chalk pictures too. We had fun showing our parents around the classrooms. We are taking our achievement tests part this week and early next week.

We are counting the days until school is out for the summer.

KINDERGARTEN CENTER

Teachers: Mrs. Bower, Mrs. Michaelson, Mrs. Packard, Mrs. VanBlaricum.

"Thank you" for your wonderful co-operation this past year. You have helped enrich the children's kindergarten experience. Many parents brought in pets and farm animals, so the children could learn about and enjoy them first hand. You've made their parties happy occasions! Several parents brought in materials and talked about their field of work. This enhances our learning.

We've had many birthday and anniversary parties. Many future kindergarten children have visited the debate clinics this summer if they have plans to visit a farm. The P.M. children sang for the Senior Citizens and enjoyed their hospitality.

Have a safe, healthy and happy summer!!!

Michigan's public roads and streets would circle the equator more than four and a half times.

BOWLING

Men's Twilight Doubles

Doug-Floyd	12	2
Nixon-Greenleaf	12	2
Lyerla-Beason	11	2
Harook-Sannes	10	4
Bauer-Herrst	7	7
Bollinger-Buckingham	7	7
Lewis-Alexander	5	9
Armstrong-Sanderson	5	9
Snyder-McCalla	5	9
McKinnon-Ford	4	10
Bill & Rob Maier	4	10
Weir-Colton	2	10
Campbell-Bowers	0	7

500 series: E. Greenleaf, 656; A. Sannes, 618; F. Northrup, 597; L. Hocking, 571; N. Fahmer, 551; J. Harook, 542; J. Lyerla, 525; R. Beason, 519; M. Ford, 507; D. Alexander, 502.

200 games: E. Greenleaf, 288; 201: A. Sannes, 228; 202: F. Northrup, 221; J. Lyerla, 208; C. Sanderson, 205; L. Hocking, 204.

WORLD LEADER

The United States continues to lead the world in motor vehicle production. In 1972, United States manufacturers produced over 11.3 million cars, trucks, and buses.

decide, along with the other nine school boards, the Washtenaw Intermediate School District, and Washtenaw Community College, before July 1, 1973, if they would support placing a career center millage on the ballot.

The question of the need for a career center to develop technical skills in non-college bound students in the school district should be given serious consideration by all concerned parents.

Do the job
in half the time



with
Dutch Boy
Latex House
Paint

- Excellent color retention.
- Glides on easily.
- No lap marks—stop & start when you please.
- Dries in only one hour.
- 100% pure acrylic latex.
- Protects for years.



MERKEL
BROS.

Phone 475-8621



CITIZENSHIP: Superintendent Charles Cameron and Dr. Gorton Riethmiller, president of the Michigan Board of Education, extended their congratulations to each of the winners of Kiwanis Citizenship Awards, Monday night. The certificates were presented on behalf of the club by Julius Blaess, Karen Sullivan, 12th grader, daughter of Mr. and Mrs. Charles Sullivan, received the 12th grade girl's award. Steve Worden was the male recipient in the 12th grade.

TEACHER TOPICS

Should your son or daughter go to college? At present, many factors indicate "maybe not." We have arrived at a point in the United States where a skilled technician is as much in demand as a college graduate. Many schools in the mid-Michigan area have already noted this and developed career centers for the non-college bound students.

In a career center, students develop basic skills in technical areas while completing high school. Students enrolled in this program attend high school for one-half of the day to study basic skills in the career areas of their choice. Some of these choices could include carpentry, auto mechanics, medical and dental assisting, cosmetology, architecture, health occupations, printing, home and hotel management, and other technical skills.

Because of the specialized courses offered, each center is supported by a one, two-, or three-county area. The Oakland County Intermediate School District (of which South Lyon is a member) discussed and formulated plans for such a county career center. The voters approved these plans and voted to finance the center, which now exists and is enthusiastic.

astically endorsed by South Lyon. The Washtenaw County Intermediate School District has formulated a plan for a career center similar to Oakland county's. Such a center would offer training to 3,000 students (in three shifts) from the 10 school districts in our county. Its cost to the taxpayer: 1.25 mills for 30 years.

Presently, Chelsea is trying to implement its very own career "center" at the high school, a plan impractical since the budget will not permit the kind of investment that should be made. Chelsea has also involved itself in the Shared-Time program whereby students are sent to area schools that offer specialized training in specific career areas. This program, if it were accepted as the alternate to a career center, would cost the taxpayer .905 mills per year and would not permit for renovation of old equipment or space.

Chelsea is fortunate to send approximately 50 percent of its graduating seniors to college (two-year and four-year). But those 50 percent who choose to enter the job market immediately both need and deserve the kind of career training that a single school district cannot possibly afford to supply. The Chelsea School Board must

FARM and HOUSEHOLD

AUCTION

Having sold the farm, a public auction will be held, located 3 miles north of Manchester on M-52 to Pleasant Lake Rd., east 3 miles to Fletcher Rd., north 1 mile, or 8 miles south of Chelsea on M-52 to Pleasant Lake Rd., east 3 miles to Fletcher Rd., north 1 mile, house No. 3840.

10:30 a.m. **Saturday, May 26** 10:30 a.m.

Phone Stockbridge 517 851-8042 **PRICE BROTHERS Auctioneers** Phone Stockbridge 517 851-8042

Farm Tools - Household - Sheep - Corn

Allis-Chalmers WD tractor w.f., good rubber.
Allis-Chalmers manure loader.
Allis-Chalmers 3x16 mounted plow.
Allis-Chalmers 2-row cultivator.
Allis-Chalmers 60 combine.
John Deere model N manure spreader, PTO.
Oliver 13-hole grain drill, on steel.
Allis-Chalmers 7-ft. trailer mower, nearly new.
Case 32-ft. elevator with electric motor.
3-section harrow.
Gale 2-row corn planter.
2 rubber-tired wagons and grain boxes.
Aluminum elevator with electric motor.
Platform scales.
8-in. hammer mill.
Fresno roll-over scraper.
Cornstalk chopper.
Homelite chain saw.
Set of bob sleighs and box.
David Bradley garden tractor with disc, cultivator, mower.
Fanning mill.
200 6-inch clay tile.
Blacksmith forge.
Bench grinder.
Air compressor.
Extension ladder.
Caldron kettle.
2 Surge milkers.
Surge milker pump.
Wooden crates.
Old wagon wheels.
Quantity maple lumber & plank.
12 milk cans.
Bench vise.
8-in. table saw.
Horse blankets.
Walking cultivator.
Lawn roller.
Crosscut saws.
Some harness.

Large amount of hand tools, forks, shovels, etc.

SHEEP

32 head mixed ewes with lambs by side.

CORN

Approximately 1200 baskets ear corn.

Household - Antiques

Kenmore automatic washer.
Kenmore automatic dryer.
GE refrigerator.
2 twin beds.
2-piece living room suite.
Antique parlor set with love seat.
2 occasional platform rockers.
Writing desk.
Chest of drawers.
Antique 2-piece bedroom suite.
3/4-size bed.
3 wash stands.
Old dropleaf writing desk.
Antique chest of drawers, tear-drop pulls.
2 antique mantle clocks.
4 antique kitchen chairs.
2 antique tables.
Humpback trunk.
Old banjo.
Picnic table.
Wooden butter bowls.
Old wood chest.
Dutch oven.
3 copper boilers.
Picture albums.
Old velvet couch.
Antique picture frames.
Old German Bibles.
1874 Washtenaw County atlas.
Quantity lamps, old fruit jars, some antique dishes.
Cooking utensils, old skillets, crocks, jugs.
Old 1900 wedding clothes.
Large amount of small items.
Yardman rotary lawn mower in good condition.

NOTE: THIS IS A CENTENNIAL FARM — A Large Amount of Antique Items To Be Sold at This Auction!

TERMS: CASH OR CHECK. LUNCH ON GROUNDS.
Not responsible for accidents or items after sold.

MRS. ALFRED KUHL
OWNER

Want to see how Plymouth Satellite stacks up against their mid-size cars?



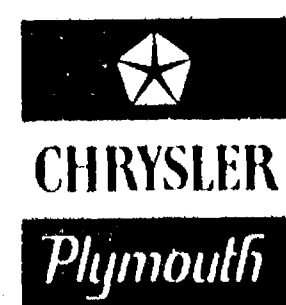
Plymouth Satellite Sebring-Plus 2-Door Hardtop

Plymouth Satellite
Sebring-Plus.
Our newest success car.
Here's why:

- ★ Beautiful new styling.
- ★ New sound-barrier treatment—so quiet we call it "Super-Quiet."
- ★ Quiet built into the doors, over the wheels, under the hood, even behind the rear seat.
- ★ Electronic Ignition System, standard, ... up to 35% more starting voltage than conventional ignition systems.
- ★ Quality built with unibody construction and torsion-bar suspension.

Compare
any way
you want.

We
welcome
it.



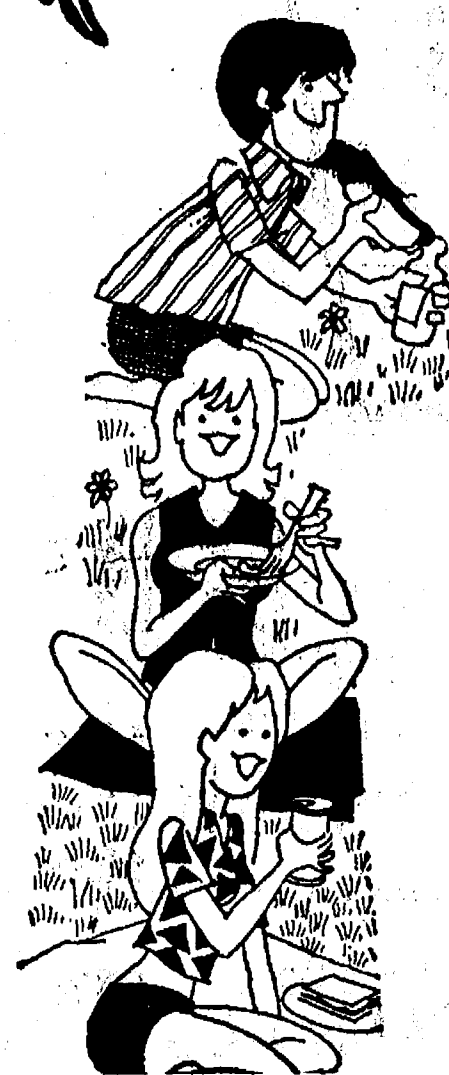
AUTHORIZED DEALER **CHRYSLER** MOTORS CORPORATION

PAA

VILLAGE MOTOR SALES, INC.

1185 MANCHESTER ROAD

CHELSEA, MICHIGAN



OPEN MEMORIAL DAY

8 a.m. to 7 p.m.

ELF
CANNED POP 12-Oz. Can **10¢**

ELF
CATSUP 14-Oz. Bottle **19¢**

VAN CAMP
PORK 'N BEANS 4 29-Oz. Cans **\$1**

DIXIE 0" WHITE
PAPER PLATES 150 Count **77¢**



KRAFT FRENCH
DRESSING 16-Oz. **44¢**

WAGNER'S
ORANGE 32-Oz. **25¢**

WELCH'S GRAPE
JELLY 20-Oz. **39¢**

THANK YOU
Tomato Juice 32-Oz. **26¢**

APPIAN WAY
PIZZA MIX 13-Oz. **25¢**

CRISCO OIL 38-Oz. **79¢**

ELF CHARCOAL
BRIQUETS 20 Lb. Bag **99¢** SAVE 38¢ WITH COUPON

FROST KIST
ICE MILK 1/2 Gal. **39¢** WITH COUPON

PRE-SWEETENED
KOOL AID 6 3-Oz. Pkgs. **59¢** SAVE 13¢ WITH COUPON

CHASE AND SANBORN
COFFEE . 3 Lb. Can **\$2.24** SAVE 35¢ WITH COUPON

STRETCH 'N SEAL
FOOD WRAP 50 Ft. **22¢** SAVE 15¢ WITH COUPON

BIRDSEYE BREAKFAST
AWAKE . . 3 12-Oz. Cans **79¢** SAVE 38¢ WITH COUPON

SAVE \$1.16 WITH COUPON
COKE, Case 24 16-Oz. Bottles **\$1.99** PLUS DEP.

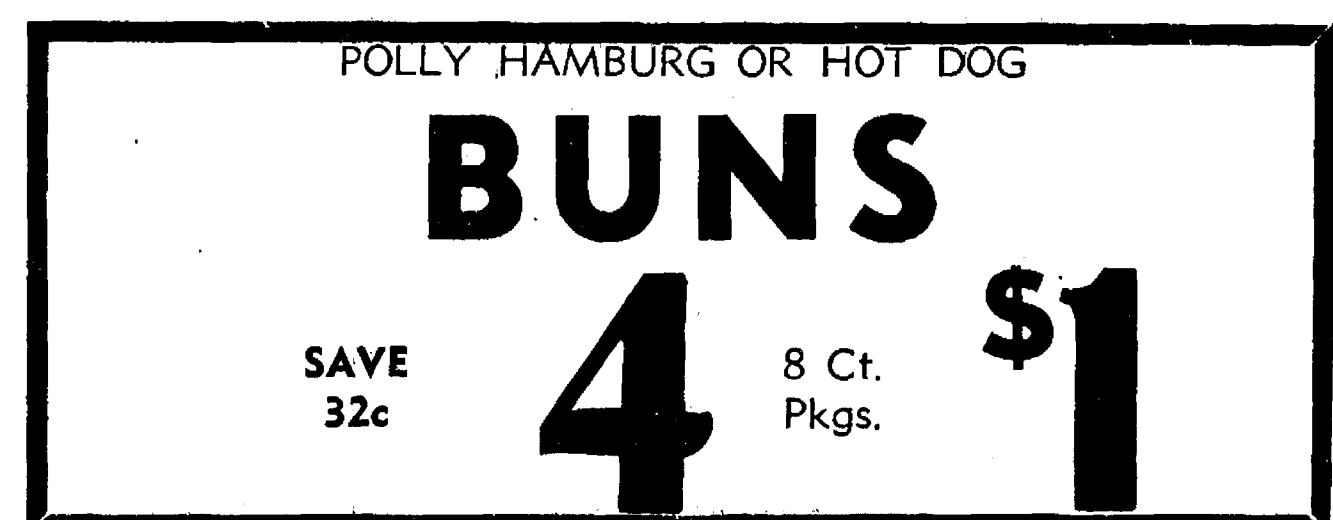
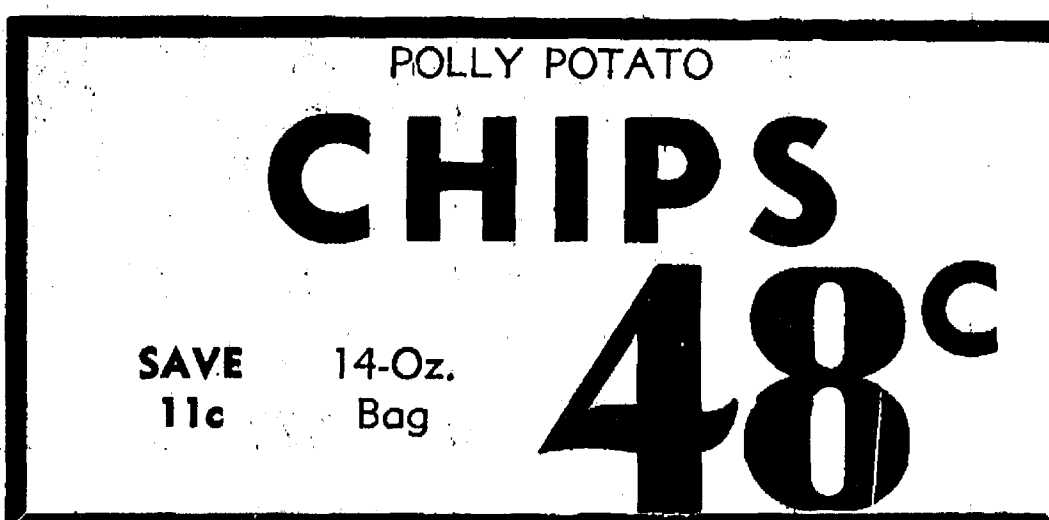
SALADA
INSTANT TEA 3-Oz. **59¢** SAVE 40¢ WITH COUPON

TOPPING MIX
LUCKY WHIP . 8-Oz. **58¢** SAVE 25¢ WITH COUPON

DETERGENT
CHEER 49-Oz. **78¢** SAVE 15¢ WITH COUPON

LIQUID CLEANER
TOP JOB 40-Oz. **79¢** SAVE 20¢ WITH COUPON

SPRAY DEODORANT
SECRET 7-Oz. **89¢** SAVE 30¢ WITH COUPON



SCHAFFER
HILLBILLY BREAD 20-Oz. Loaf **38¢**

HOLSUM HONEY AND
EGG BUNS 12 Pak **45¢**

HOLSUM
SESAME BUNS 8 Pak **45¢**

ASSORTED KEEBLER
COOKIES 3 Pkgs. **\$1**

LEMON JUICE
REALEMON 32-Oz. **49¢**

RAGU SPAGHETTI
SAUCES 32-Oz. **66¢**

FRENCH'S
MUSTARD 24-Oz. **33¢**

HELLMAN'S
MAYONNAISE 32-Oz. **69¢**

KLEENEX WHITE OR ASSORTED
FACIAL TISSUE 200-Ct. **25¢**

DEL MONTE LIGHT CHUNK
TUNA 6 1/2-Oz. Can **38¢**

OPEN PIT BARBECUE
SAUCE 18-Oz. **33¢**

HUNT'S
CATSUP 32-Oz. **44¢**

STOKELY WHOLE KERNEL OR CREAM
CORN 17-Oz. **19¢**

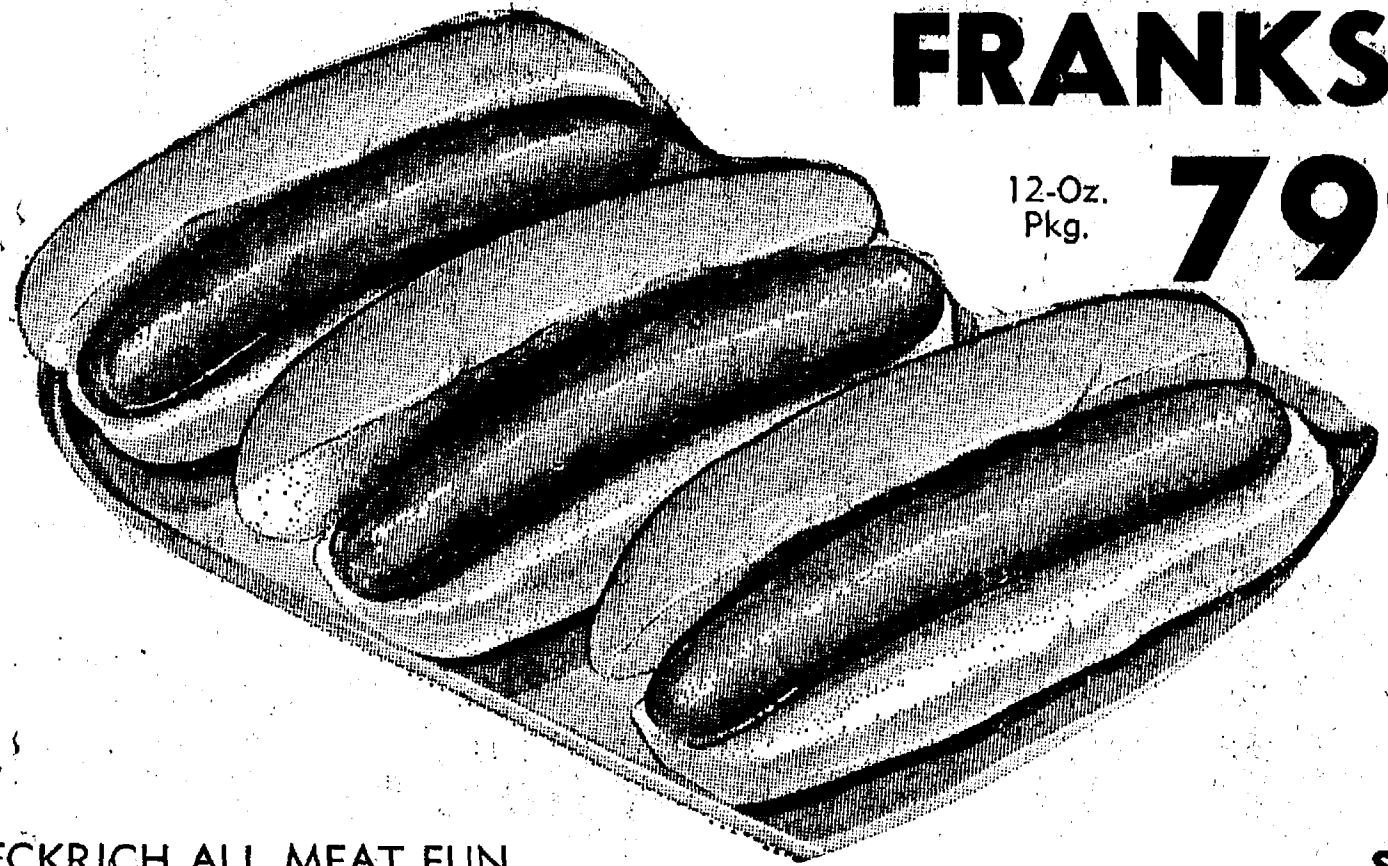
PURINA DOG
CHOW 50-Lb. Bag **\$6.39**

HEFTY LAWN AND LEAF
BAGS 50 Ct. **49¢**



1101 M-52 CHELSEA

OPEN DAILY 8 a.m. to 10 p.m.
OPEN Sundays, 8 a.m. to 7 p.m.



FARMER PEET'S

FRANKS
12-Oz. Pkg. **79¢**

ECKRICH ALL MEAT FUN

FRANKS Lb. Pkg. **89¢**

HYGRADE

BALLPARK FRANKS

SAVE 10¢ WITH COUPON

1-Lb. Pkg.

\$1.09



U.S.D.A. CHOICE BEEF

CHUCK STEAK
lb. **77¢**

U.S.D.A. CHOICE BEEF SHOULDER ROUND BONE **SWISS STEAK** Lb. **\$1.19**

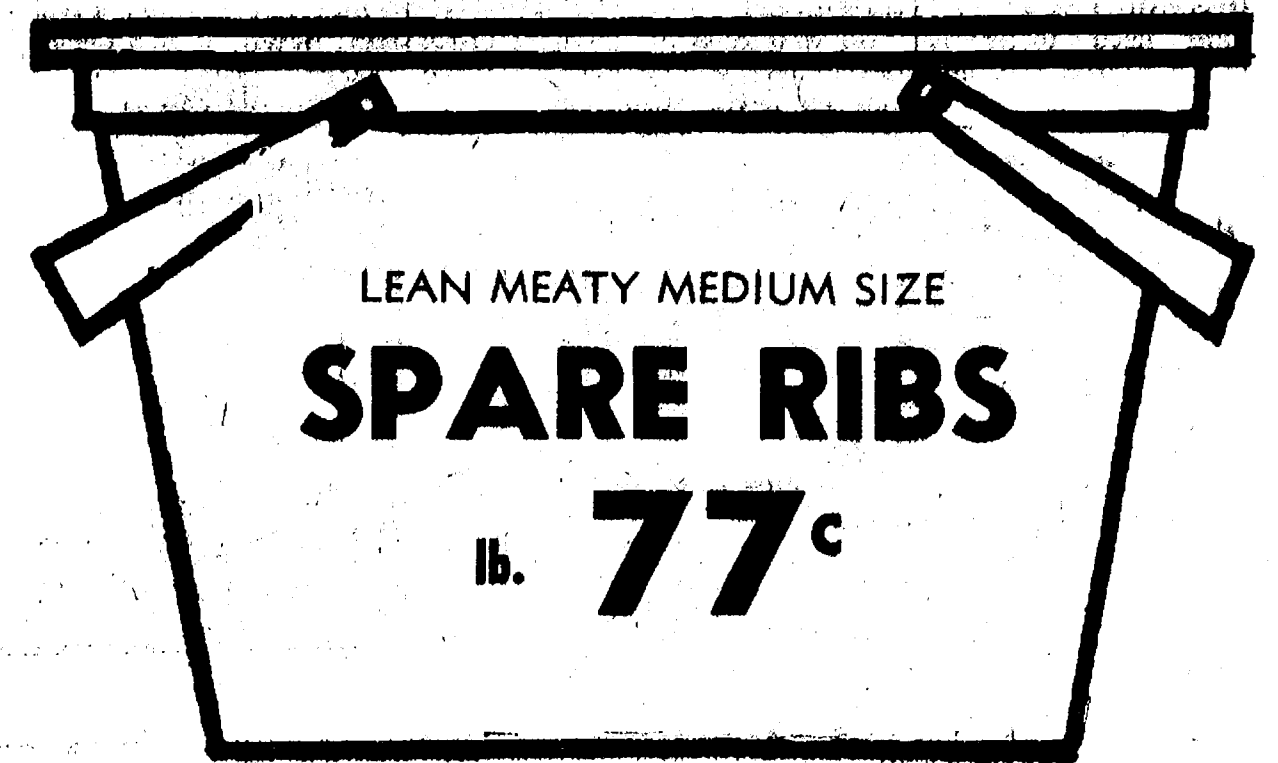
U.S.D.A. CHOICE BEEF BONELESS **OVEN ROAST** Lb. **\$1.29**

EXTRA FANCY FRESH GROUND **BEEF CHUCK** Lb. **\$1.19**

FRESH DRESSED SPLIT **BROILERS** Lb. **59¢**

PARTS MISSING **CORNISH HENS** 16-Oz. **69¢**

ARMOUR STAR SELF-BASTING YOUNG HEN **TURKEYS** 10-14 Lbs. Lb. **69¢**



HERRUD WHOLE

SEMI-BONELESS HAM Lb. **88¢**

HERRUD JUMBO CHUNK **BOLOGNA** Lb. **88¢**

10-OZ. PKG. ECKRICH **SMOKY LINKS** **89¢**

HYGRADE PURE PORK ROLL **SAUSAGE** Lb. **78¢**

12-OZ. PKG. HYGRADE BABY LINK **SAUSAGE** **88¢**

FARMER PEET'S REPÉTER **BACON** Lb. **98¢**

PEET'S BULK SLICED **BOILED HAM** ½ lb. **69¢**

ECKRICH REGULAR OR THICK SLICED **BOLOGNA** Lb. **\$1.39**

ECKRICH FANCY **SMORGASPAK** Lb. **\$1.29**

12-OZ. PKG. ECKRICH ALL BEEF **SMORGASPAK** **\$1.29**

HYGRADE WEST VIRGINIA SLICED **BACON** Lb. **\$1.19**

PEET'S BONANZA **BONELESS HAM** **\$1.29**

PEET'S V.C. SLICED SAUSAGE **PATTIES** Lb. **99¢**



SAVE \$1.00 WITH COUPON SWIFT PREMIUM **CANNED HAM** 5-Lb. Can **\$5.99**

BONELESS COOK-OUT SPECIALS

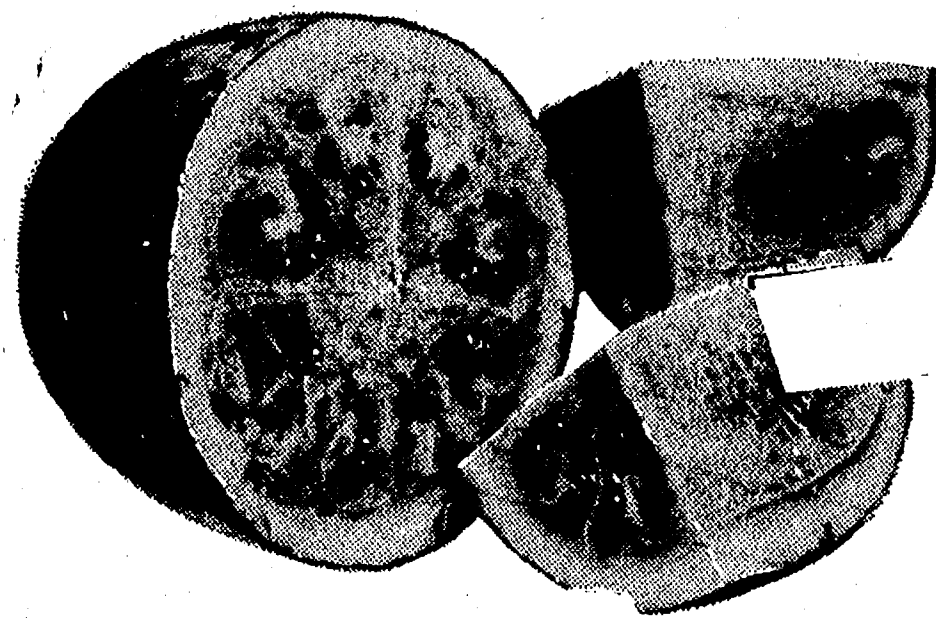
Top Sirloin Steak Lb. \$1.99	New York Strips Lb. \$2.79
Sirloin Tip Steak Lb. \$1.89	Pork Chops Lb. \$1.89
Club Steaks Lb. \$1.99	Pork Roast Lb. \$1.09

MR. BOSTON BREADED **PERCH** Lb. **79¢**
MR. BOSTON BREADED **SOLE** Lb. **79¢**

MR. BOSTON BREADED **COD** Lb. **79¢**
MR. BOSTON BREADED **FLOUNDER** Lb. **79¢**

CONVENIENTLY FOR YOU FROM
OUR DELICATESSAN
YOUR CHOICE

HONEY BAKED BEANS
POTATO SALAD
MACARONI SALAD
COLE SLAW
lb. **49¢**



ALPINE BAKE HAUS SPECIALS

HAMBURG BUNS 8 ct. **39¢**
8-INCH **CHERRY PIES** ea. **69¢**
JELLY FILLED **BISMARCKS** 6 for **59¢**
CHOCOLATE COVERED **CAKE DONUTS** 12 for **69¢**
PEANUT **BUTTER COOKIES** 12 for **59¢**
DATE HERMITS 12 for **69¢**
HARD CHEESE OR **ONION BUNS** 8 for **42¢**

SUGAR SWEET RED RIPE

WATERMELON
HALF **69¢** WHOLE **\$1.29**

"CALIFORNIA DRISCOL"

STRAWBERRIES Quart **79¢**

"FIRST OF THE SEASON" "BURLAPS DARK" **CHERRIES** ½ Lb. **59¢**

GOLDEN ROASTING EARS **CORN** Each **9¢**

"FIRST OF THE SEASON" FLORIDA **PEACHES** Lb. **59¢**

SOLID GREEN **CABBAGE** Lb. **15¢**

CRISP RED RADISHES 6-Oz. **10¢**

CRISP CALIFORNIA CELERY Large Stalk **33¢**

VINE RIPE TOMATOES Lb. **29¢**

BANQUET FROZEN CHOCOLATE, STRAWBERRY, LEMON, BANANA, OR COCOANUT

CREAM PIES 4 14-Oz. Pkgs. **\$1**

13½-OZ. CHEF BOY-AR-DEE FROZEN **PEPPERONI PIZZA** **79¢**

17-OZ. CHEF BOY-AR-DEE **DELUXE PIZZA** **89¢**

8-OZ. BRILLIANT FROZEN COOKED **SALAD SHRIMP** **88¢**

16-OZ. RICH'S **COFFEE RICH** **25¢**

BORDEN'S FAMILY TREAT

FUDGE BARS 24 Pak **88¢**

LADY BORDEN REGULAR OR BOUTIQUE

ICE CREAM Quart **59¢**

SEALTEST

COTTAGE CHEESE 3 16-Oz. Cartons **\$1**

HEALTH AND BEAUTY AIDS ALL DISCOUNT PRICED

SHAMPOO

LIQUID PRELL 11-Oz. **73¢**

5-OZ. TUBE **PRELL SHAMPOO** **77¢**

20% MORE IN 8.75-OZ. TUBE **CREST TOOTHPASTE** **79¢**

20-OZ. MOUTHWASH **LAVORIS** **96¢**

16-OZ. ALBERTO VO-5 **HAIR SPRAY** **\$1.29**

NEEDED DESPERATELY

Another vital need today is world peace in the large economy size.

BEWARE!!

He who runs for political office may read things about himself that he never suspected.

Ann Arbor Bank Elects New Vice-President, Trust Officer from Wisconsin

Ann Arbor Bank President Joseph B. Foster has announced the election by the bank's board of directors of James T. Cleary of

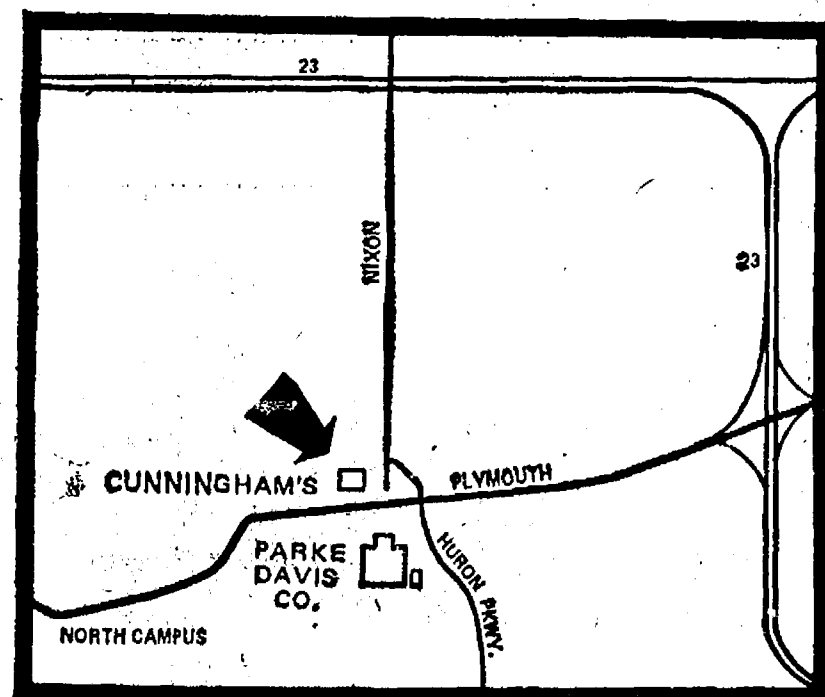
Beloit, Wis., to the position of vice-president and trust officer in charge of the Trust Department. Cleary is currently the vice-

president and trust officer at the Beloit State Bank, Beloit, Wis. He will join the Ann Arbor Bank approximately June 15.

NOW! THERE'S A 24 HOUR DRUG STORE JUST MINUTES AWAY

CUNNINGHAM'S 21
at 2781 PLYMOUTH ROAD
IN ANN ARBOR (ACROSS FROM PARKE DAVIS)
PHONE 761-6404

PUT THIS
ADDRESS
AND NUMBER
IN YOUR
PHONE BOOK



HERE'S HOW TO FIND US
JUST A SHORT DRIVE FROM HOME!



REGISTERED
PHARMACIST
ON DUTY AT
ALL TIMES

Now there's a drug store OPEN 24 HOURS EVERY DAY OF THE YEAR . . . and it's only minutes away from your home. It's at 2781 PLYMOUTH ROAD IN ANN ARBOR, just off of U.S. 23. You can Phone 761-6404 anytime of the day or night . . .

PUT THIS ADDRESS AND PHONE NUMBER IN YOUR PHONE BOOK RIGHT UNDER YOUR FAMILY DOCTOR'S LISTING

FOR EMERGENCIES:

Registered pharmacists are on duty 24 hours a day, at our Plymouth Road store, ready to dispense prescriptions from complete stocks of current drugs. A phone call from your doctor is all we need to have your prescription ready when you come in. We're ready around the clock, so that we're there when needed.

FOR NIGHT WORKERS:

Many folks are forced into difficult shopping and living patterns just because they work on a night shift. Now Ann Arbor "night people" can shop when it suits their needs and still find the same low prices and same wide assortments from which to choose as their daytime friends. So stop in when the need suits you.

FOR CONVENIENCE:

Isn't it nice to know that there is a place . . . even at 3:00 a.m. that has smoking needs, health aids, beauty needs, household needs, magazines and books, bread and milk . . . actually with 21 Shops with things you might need whatever the hour.

FOR THE CHRONICALLY ILL:

Have the peace of mind that comes with having your prescription filled and on file at a pharmacy that can supply needed additional medication at any hour of any day including Sundays and holidays.

Summer Rec Program Needs Adult Help

The Chelsea Area Recreation Council's summer program will never get off the ground without adults to direct the various sports activities.

An adult is needed to take on responsibility for the T-ball and little league programs, programs that were enthusiastically supported by youngsters a year ago.

Also needed are interested fathers to coach Little League and T-ball teams.

The tennis and baton classes are also without adult leaders.

Any persons interested in any of these jobs should contact Ken Larson at 475-2850.

THANK YOU

I would like to thank the Chelsea Fire Department and Jerry Heydlauff, Dan Heydlauff and Roland Helm for re-building my barn yard fence.

Joe Taylor.

THANK YOU

We wish to extend our sincere thanks and appreciation to our family and friends and employees of Federal Screw Works for their kindness and thoughtfulness in the loss of our father and grandfather. A special thanks to Rev. Fr. Dupuis and the Staffan Funeral Home.

Mr. and Mrs. Nicholas Koski and family.

Mr. and Mrs. Charles Stapish and family.

THANK YOU

Thank you to all friends and neighbors for your thoughtfulness in a time when it meant so much. No words can express the feeling and comfort of true friends in a time of sorrow.

Families of Mariann Winkle, Husband Lyle and children, Deborah and Darrin Winkle, Helen and Merle Sibley, Elmer and Elsie Hartmann.

THANK YOU

The VFW Post No. 4076 and Ladies Auxiliary wish to thank the community for helping to make our Buddy Poppy sales a success on the streets of Chelsea Friday, May 18. A special thanks to the Senior Citizens for use of their building, the merchants who displayed our posters and The Chelsea Standard. Also many thanks to all my helpers.

Lucy Platt, chairman, V. F. W. Auxiliary.

IN MEMORY

In loving memory of our beloved parents Mother, Alma L. Esch who passed away April 23, 1962, Father, Louis W. Esch who passed away May 26, 1961.

Broken is the family circle, our dear ones are passed away, passed from earth and earthly darkness, into bright and perfect day. But we all must cease to languish o'er the graves of them we love. Strive to be prepared to meet them, in the better world above.

Sadly missed by sons and daughters and grandchildren.

ARTISTIC ROBBERS?

Art historians estimate that 90 percent of Peruvian artifacts in museums and private collections come from grave robbers, who are farmers by day and treasure hunters by night.

Exceptionally Heavy Traffic Expected on Holiday Week-end

Michigan motorists, driving more than three million vehicles, will log an estimated 795 million miles during the upcoming Memorial Day holiday week-end, according to Automobile Club of Michigan.

"This traditional kick-off holiday for the summer vacation season is one of the heaviest traveled periods of the year," said Joseph L. Ratke, Auto Club touring manager, noting that the projected mileage for the 78-hour week-end is nearly five percent greater than last year's Memorial Day travel.

During the period from 6 p.m. Friday (May 25) to midnight Monday (May 28), about six out of every 10 motorists on the road will experience some delay due to the heavy volume of traffic, Ratke said.

Auto Club reminds travelers to minimize traffic delays by beginning their trips either before or after rush periods.

Peak travel times are: Friday, 7 p.m. to 10 p.m.; Saturday, 9 a.m. to 1 p.m. and 6 p.m. to 9 p.m. and Monday, 2 p.m. to 10 p.m.

"Travelers probably will encounter the biggest traffic problems on Monday when they return home," Ratke said. "Sunny and warm weather will only worsen the situation since many families will extend their stays and then crowd the highways."

Auto Club expects the worst freeway traffic problems in the state to develop on I-75 around Flint due to a 21-mile-long road widening project between the merging point of I-75 and US-23 and Birch Run.

Although work will be suspended during the Memorial Day week-end, traffic at peak travel times around Flint is expected to slow considerably due to the close proximity of construction ditches, equipment and barrel markers.

Motorists should have no unusual delays during peak travel periods at the Zilwaukee Bridge, which carries I-75 over the Saginaw River near Saginaw. Shippers have agreed to eliminate bridge openings on Friday from 3 p.m. to midnight, Saturday from 7 a.m. to 11 a.m. and Monday from 10 a.m. to 7 p.m.

As in the past, the State Highway Department has ordered road construction stopped across the state from 5 p.m. Friday to 8 a.m. Tuesday, May 29.

Auto Club notes that one previous traffic bottleneck—the I-94 construction gap at the Michigan-Indiana state line—has been eliminated. Now motorists can drive non-stop from Detroit to Chicago in less than five hours on a toll-free, four-lane highway.

Over the Memorial Day week-end most travelers are expected to confine their trips to within a 250-mile radius of home. Many thousands also will be traveling the maximum round-trip distance of 1,500 miles during the 3½ days.

"Just because they are not driving far from home, motorists should not get a false sense of security when out on the highway," Ratke stated, adding that "Last Memorial Day week-end, when 20 persons died in auto accidents, 17 out of the 23 drivers involved were less than 25 miles from home."

Auto Club notes that this Memorial Day week-end, motorists could significantly reduce the number of fatal accidents by taking these precautions:

—Since alcohol is a factor in six out of every 10 fatal accidents, motorists are urged to avoid drinking alcoholic beverages. Auto Club points out that two ounces of alcohol consumed in an hour double a motorist's chance of having a fatal traffic accident.

—Drivers and their passengers should wear seat belts every mile they travel to protect themselves against other drivers' mistakes. Seat belts, Auto Club notes, are often the difference between suffering serious injury or death and walking away from an accident unharmed.

—Headlights should be kept on during daylight hours when driving on two-lane roads to help all drivers see oncoming traffic more clearly and to better determine safe passing distances.

This year Citizens Band radio and other civic groups will again offer free coffee to motorists at various rest stops along Michigan's Interstate routes. Auto Club's "Bring 'Em Back Alive!" bumper stickers and safety information also will be available at these rest stops.

The Auto Club's News Service will be providing motorists with hourly bulletins on traffic conditions and holiday recreational activities daily between 8 a.m. and 11 p.m. Approximately 130 Michigan radio and TV stations will be broadcasting Auto Club reports, making state motorists the best informed travelers in the nation.

Band Boosters Elect Officers

At the May 17 Band Boosters meeting there was an election of new officers for 1973-74. They are: president, Phil Hume; vice-president, Mike Sweet; secretary, Mrs. Earl Klemer; and treasurer, Robert Burns.

Warren Mayer thanked the retiring officers and committee chairman: president, James Sprague; vice-president, Jim Lorenz; treasurer, William Chandler; candy and fruitcake chairman, Mrs. Tom Morrison; calendar chairman, Mrs. Kermit Sharp; publicity chairman, Mrs. James Sprague; uniform committee chairman, Mrs. James Gaunt; band camp directors, Mr. and Mrs. Mel Leach and Andy Blackwell.

Committee reports followed with Mel Leach stating that band camp chaperones are still needed for Aug. 19-26. Any interested parents would be greatly appreciated. Phone the Leaches at 475-8123.

Rainwear samples were shown and discussed.

Warren Mayer had several announcements including that complete band uniform checks will be Tuesday morning, May 29 through Friday June 1. The Junior High Band concert is to be Thursday evening, May 31 at 7:30 p.m.

Mrs. Kermit Sharp announced that typists are needed for assembling Band Calendar information and anyone interested may phone her at 475-8744.

A letter from Diane Klemer, representing the senior band members, thanking the Band Boosters for their April 26 dinner at the Campus Inn as Band Boosters guests, was read.



INVITATIONS or
ANNOUNCEMENTS . . .

Let us provide you with the very finest printed or engraved invitations and announcements. Make certain that your wedding stationery is of top quality and conforms to correct social requirements. We can advise you on these important details.

THE CHELSEA STANDARD

Social Printing Department

300 N. MAIN ST., CHELSEA

PHONE 475-3171



A DIFFICULT DECISION had to be made Monday night. The Chelsea Scholarship Committee had to decide which of the deserving high school seniors who had applied would receive a financial boost toward their career goals. The recipients will be announced at Class Night, Wednesday, June 6. The citizens and teachers who put their heads together to make that difficult choice are, from left

to right, seated: Mrs. Charles Whans, Mrs. J. Raymond Seitz, Mrs. Henry Conlin, Mrs. Robert German, Mrs. Philip Hume; standing, from left, George Bergman, Joseph Rossi, Sam Vogel, George Prinzing, Ray Canine, and James Sprague. Mrs. Earl Klemer, also a member of the committee, is missing from the photo.

Operation Red Ball To Aid in Fire Safety

Operation Red Ball, an attempt to lessen the number of lives lost in home fires every year, is going into effect in Chelsea as a result of the efforts of Chelsea firemen and the Chelsea Jaycees.

Both this Saturday, May 26, and next Saturday, June 2, the Chelsea fire station will be manned from 1 to 3 p.m. with firemen distributing red ball stickers. These 2½-inch stickers are to be displayed in the windows of the bedrooms of small children or invalids so that, in the event of fire, firemen will know where their rescue operations should begin. A red ball is also to be displayed on the front door to alert firemen to the fact that children or disabled individuals may be inside.

The red ball system is said to have been of help to firemen where it is already in effect. It is supported by the National Jaycees and many fire departments all over the country.

In some communities the red stickers are distributed through the elementary schools, where firemen explain to the children the importance of putting a red ball in their bedroom window. The Chelsea Fire Department, however, chose to distribute the stickers to families on Saturday in order to insure that the stickers are properly placed.

They also want to make a list of who has the stickers. This information will be catalogued so that while enroute to a fire, fire-fighters can determine whether or not children and invalids must be accounted for at the scene.

The red balls can save lives only if they are properly used. Parents should see that they are displayed in windows of those who would most need help in the event of fire, and they should see to it that stickers are removed once the child is grown or if the family moves.

Saturday's distribution will be the first of what will be an annual event, according to a Jaycee spokesman. The firemen and Jaycees in the years to come will bring Operation Red Ball up to date during Fire Prevention Week in Chelsea by distributing the stickers to new residents. Others, who through sickness or a new arrival, need new stickers will also be able to secure them at that time.



HUME-REILLY: Mr. and Mrs. Philip Hume of 12 Hickory Dr., have announced the engagement of their daughter, Karen, to Mike Reilly, son of Mr. and Mrs. Basil Reilly of North Territorial Rd. A November wedding is being planned. The bride-to-be is a 1972 graduate of Chelsea High school and is currently employed at Palmer Motor Sales. Her fiancé is also working at Palmer Motor Sales.

Girl Scouts

TRUMP 442

Our troop spent the week-end camping at the home of Mr. and Mrs. Jerry Satterthwaite. We really liked them. We enjoyed hiking, cooking, and building fires. We also received our badges.

On Monday, May 21, we had an orientation for Brownie Troop 169 at the home of Mrs. McDowell. Next Monday we will march in the Memorial Day parade.

Tami Schulze, scribe.

TRUMP 169

Troop 169 was invited by Girl Scout Troop 442 and Mrs. McDowell to her house to hear a program on orientation to scouting. We learned about different badges, troop patrols, saw one of the tents the girls use and were told about a camping trip the girls took. We also played games and had refreshments. Everyone had a good time.

Troop 169 scribe:

Cheesemaking in this country evolved from a local farm industry to a business with the first cheese factory in 1851 near Rome, New York.

Cereals are present in more than 90 percent of all American homes, they are included in about 25 percent of all breakfasts, and they are an important contribution of needed nutrients to more than 50 million Americans each morning.

The Chelsea Standard, Thursday, May 24, 1973 15

TATTOOING HISTORY

Before the invention of the electric needle, tattooing was done with pointed sticks and wooden mallets, much as sculptors work

with hammer and chisel. The process could take days.

Almost all of the country's navy beans are grown in Michigan.

REAL ESTATE ADVICE

RESIDENTIAL PROPERTIES
COMMERCIAL - INDUSTRIAL
FARMS
VACANT LANDS

SPEAR & ASSOCIATES,

REALTORS

1935 Pauline Plaza

769-5750



ELLIS PRATT
428-8046

See Us for Your Week-End GARDENING SUPPLIES

- ★ SEEDS
- ★ FERTILIZERS
- ★ INSECTICIDES
- ★ DAHLIA & GLAD BULBS
- ★ PEAT MOSS
- ★ MILORGANITE
- ★ BORDER FENCING
- ★ SIMPLICITY TRACTORS, TILLERS & MOWERS
- ★ LAWN BOY POWER MOWERS
- ★ GARDEN MASTER MOWERS
- ★ BLACK & DECKER ELECTRIC MOWERS
- ★ DISSTON, ROCKWELL, B & D CORDLESS TRIMMERS
- ★ PARKER SWEEPERS
- ★ McCULLOUGH CHAIN SAWS

CHELSEA HARDWARE

YOUR PRO STORE

110 S. Main St.

Phone 475-1121

School Board Briefs

At the Monday night regular Chelsea Board of Education meeting, board members Storey, Irwin, Schafer, Hopkins, Koenig, and Haselschwardt, attended. Superintendent Cameron, Business Manager Mills, Principals Lane, Conklin, Wojcicki and Benedict, Assistant Principal Lapanowski, and Attorney Flintoft were also present. Several guests also attended.

A letter from the First Congregational church regarding Wednesday night events scheduled by the high school was read and discussed. The schools attempt to keep that night free so as not to conflict with church events but it is not always possible.

The board approved the implementation of a computer-assisted instruction program in high school science and math courses for 1973-74. Bill Bainton, John Schaffner, Joe Rossi and Chuck Kelly have been attending Washtenaw Intermediate School District instruction classes in the use of the school district's computer so that they

will be able to use it in their classes in the fall.

New textbooks as requested by the teachers for high school, and middle school science classes were approved by the board for 1973-74.

Fred Powell and Arden Musbach, who said they were representing a large number of citizens, spoke to the board about their concern over the reassignment of principals. The board listened to their arguments but did not reply.

Mayer Dr. was discussed as to whether it should remain a school responsibility. It is not yet completed. The topic was referred to the Business Administration, Finance and Planning Committee.

The athletic budget for 1973-74 was discussed. A budget of \$12,000 was approved.

The proposed Village Park Ordinance that would give Chelsea police jurisdiction over school playgrounds during non-school hours was discussed. School rules would still apply to the grounds.

The reading program of Ed Ventures, Inc., was discussed with Dr. Donald Smith, reading specialist from the University of Michigan.

The board authorized the business manager to proceed with the seeding of the Beach school athletic field and with the maintenance work on the high school athletic field.

The board called an executive session which lasted from 11:35 until 11:55. Then the regular meeting was called back to order.

The recommendation to hire Tom Balistrere as a physical education teacher and head basketball coach was approved. Balistrere taught at Chelsea four years ago. He has since held positions at Albion College and at a high school in Carlyle, Pa.

The board approved a leave for Mary P. White for the 1973-74 school year.

Trustee Schafer, board representative on the Chelsea Area Recreation Council, reported on the May 8 council meeting.

Piano Pupils Appear In Spring Recital

LaVonne Harris, a certified Michigan Music Teacher, presented her Junior and Senior High pupils in a second annual Spring Piano and Organ recital Sunday. Thirty-five parents and friends filled the audience.

The performers, who played two selections each, were Cindy Barrels, Josephine Bennett, Susan Pawlowski, Cheryl Koch, Laura Burns, Mary Spencer, Randy Ellis, David Burg, Randall Harris, Diane Bury, Cheryl Pawlowski and Julie Chapman.

LYNDON STUDY CLUB

Lyndon Study Club met May 17, at the town hall. Hostesses were Mrs. Clara Hudson, Mrs. Hanna Hanewald, and Mrs. Beulah Boyce.

The tables were decorated with spring flowers. The meeting was opened with the Extension Creed with 15 members and one guest, Mrs. J. Schelcher. The lesson was given by Mrs. Doris Fuhrmann on mass recycling of solid waste. A card was sent to Mrs. Winnie Ulrich.

The June meeting will be at the home of Mrs. Norman Kaiser, June 21. If it rains or is cold, it will be at the town hall. The meeting will include a pot-luck dinner.

Subscribe today to The Standard!

YES
WE ARE MAKING
LONG-TERM FARM
REAL ESTATE
LOANS

SEE US



P. O. Box 1006
Ph. 769-2411 3645 Jackson Rd.
Ann Arbor, Mich. 48103



PROBLEMS??

That's why we're here!

Trust us. We're the guys who know the inside story... and our shop is equipped for any car emergency. Service is our specialty. So bring your problems to us.

TIRES - BATTERIES - ELECTRONIC TUNE-UPS
BRAKE SERVICE - WHEEL ALIGNMENT - WRECKER SERVICE

Fred's Standard Service

889 S. Main, Chelsea

Phone 475-2804



D. R. ELWART, D.C.

MURDER by omission

If you knew what we know about Chiropractic and good health, the single most important event in your life would be your weekly life-giving Chiropractic adjustment.

Our greatest SHAME and GUILT is our inability to fully communicate this vital message to you. Because of this you will have diseases and pain you shouldn't have and you will die sooner than you should.

We feel personally responsible for this tragic fact because as a life principle Chiropractor we know we have the necessary knowledge and skills to make your life longer, healthier and happier.

HOW CAN WE GET YOU TO UNDERSTAND?

HOURS: Mon., Wed., Fri., 9-12, 2-5, 6-8; Sat., 9-12.
CLOSED TUES., THURS., SUN.

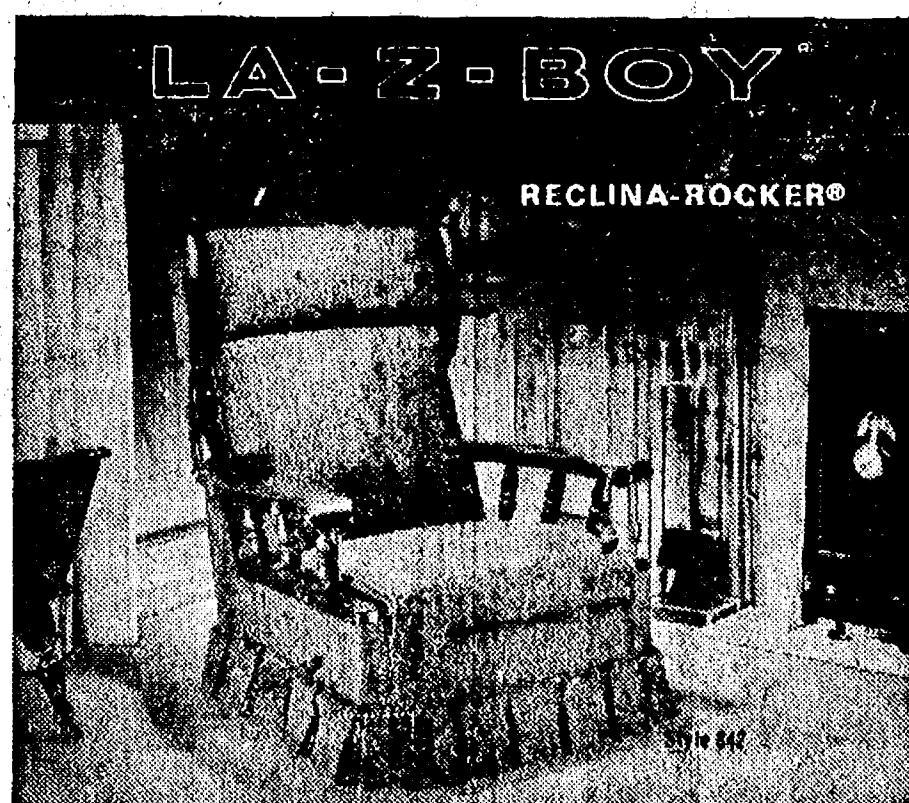
CHIROPRACTIC FOR LIFE

CHIROPRACTIC CENTER

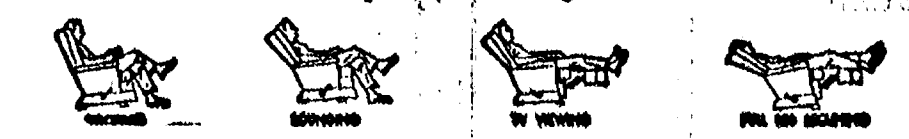
7970 CLARK LAKE RD. CHELSEA, MICH. 475-7633

We're across the road from Clark Lake on M-52, ½ mile north of Waterloo Rd.

IF LOST, 475-7633



This chair is destined to be sought after by every member of your family. The generous proportions are enhanced by the burnished dark pine finish of the wood accents. It is fully reclining. It's the rocker that doesn't look like a rocker. LA-Z-BOY's exclusive Comfort Selector's three-position leg-rest can be easily adjusted with or without reclining the chair. This graceful styling is certain to add charm and warmth to your home. A selection can be made from hundreds of attractive decorator colors and fabrics, most of them treated with Scotchgard Fabric Protectors.



Merkel Home Furnishings

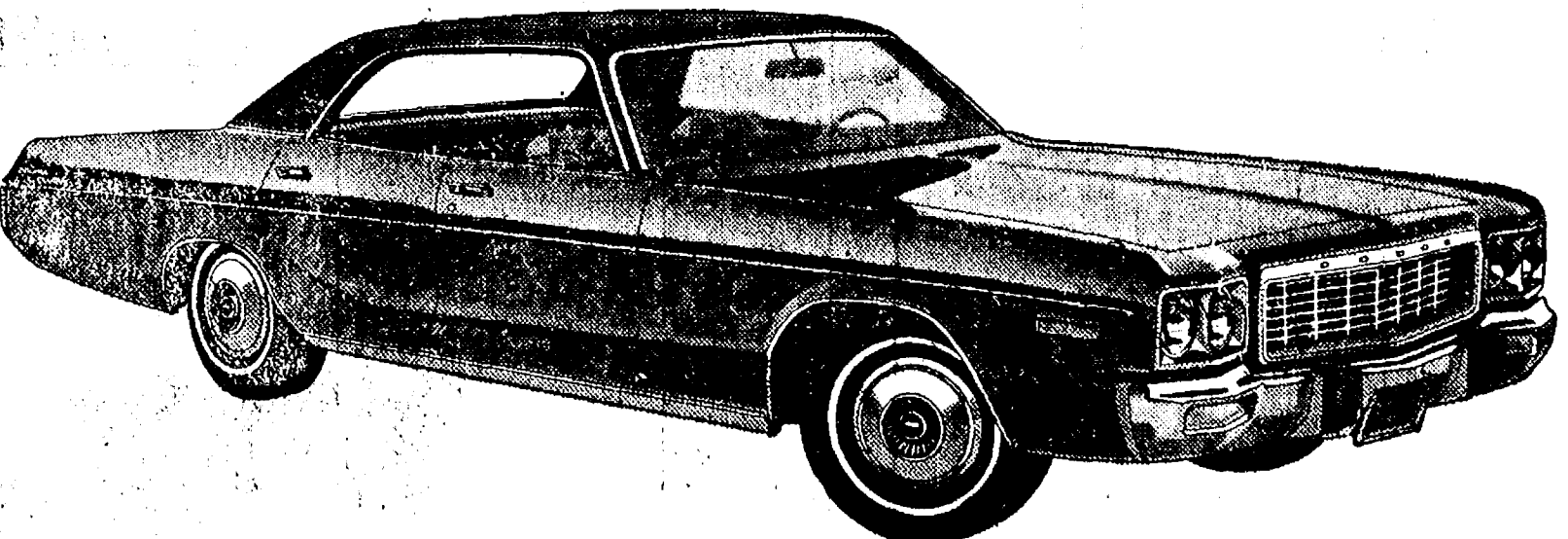
Open Mon. & Fri. Until 9

Ph. 475-8621

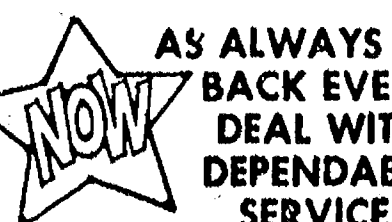
TAKE IT FROM ME, THE ORIGINAL GOOD GUY.



'73 POLARA. It's an easy step up in price to get Dodge Polara's full-sized looks, luxury, and equipment. But it's the engineering features, such as Electronic Ignition and Torsion-Quiet Ride, that make Polara an outstanding buy. Check it out now! See how much room, comfort, and luxury your money buys at the Dodge Boys'.



THE GOOD GUYS AT
VILLAGE MOTOR SALES, INC.
INSIST ON GIVING YOU A GREAT DEAL
ON THE BIG DODGE!



Dodge CHRYSLER
AUTHORIZED DEALERS

VILLAGE MOTOR SALES, INC.
1185 Manchester Rd. Chelsea, Mich.



Ten Granted Scholarships By March of Dimes Chapter

Ten \$500 scholarships were awarded by the Washtenaw County Chapter of the March of Dimes, Tuesday night. Two were received by young ladies from the Chelsea area.

Chelsea High School seniors Reatha Treado, daughter of Mrs. Daphne Treado and the late Mr. Treado of 129 South St., and Diane Klemer, daughter of Mr. and Mrs. Earl Klemer of 634 Flanders St., each received an award which will help defray the cost of their studies at the University of Michigan next fall.

Reatha plans to enter the school of nursing while Diane will be a five-year pharmacy student.

Michele Mooneyham, daughter of Mr. and Mrs. John L. Mooneyham of 622 Sunset Dr., Manchester, also received a \$500 scholarship which will go toward her expenses at the School of Nursing at Eastern Michigan University.

The other seven recipients, all planning medical careers, are from Ann Arbor, Ypsilanti, Saline and Milan.

The presentation of these scholarships was made possible by the contributions made during this year's March of Dimes campaign. It was announced that \$68,000 was collected in the country-wide campaign to provide funds for birth defects research and treatment.

Another award worth \$250 was presented to Michael Liepman, a senior medical student at the University of Michigan for his essay on birth defects.

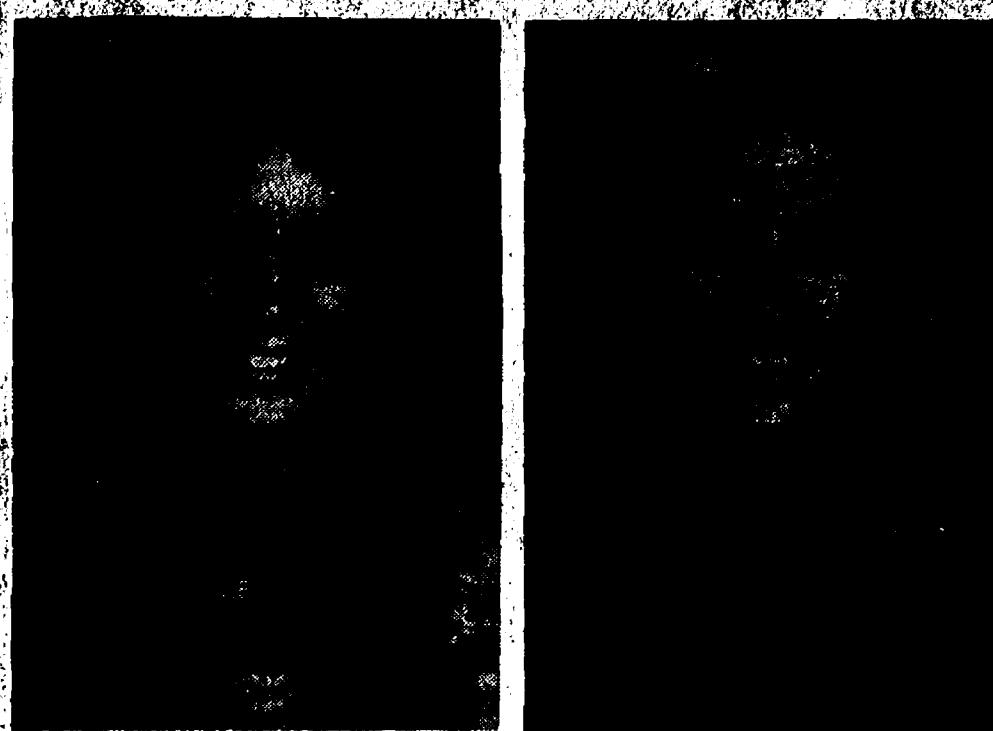
A portion of the meeting, Tuesday night, was used to elect the Washtenaw County March of Dimes officers for the coming year. Mrs. John Briegel was re-elected chapter chairman. Mrs. Robert Rau was also re-elected to the position of secretary. Another returning officer is Ralph Beuhler in the job of treasurer.

Other election results are: Mrs. Robert Henry, vice-chairman and special events advisor; Mrs. Edward Salowitz, 1974 county March of Dimes campaign director; Mrs. Cary Claypool, re-elected legacy chairman; Mrs. Norman Brennan, mailing advisor; Dr. Allen Dumont, medical advisor.

Mrs. Donald Vroom, Mothers' March advisor; Mrs. Robert Gustine, nominating chairman; Mrs. Kenneth Frivett, public information chairman; Mrs. Louis Galan, re-elected scholarships chairman; Mrs. Stephen Brownell, re-elected speakers bureau chairman; Mrs. George Perros, re-elected patient services chairman.

Mrs. Harold Reames, public education chairman; Mrs. Raymond Martin, publicity chairman; Mrs. Marvin Griffin, re-elected teen advisor; and Mrs. Lynn Lewis, executive secretary for the chapter.

Veterans thinking of selling homes bought with GI loan guarantees are urged to get a "release of liability" from the VA if the loan is assumed by the buyer. Unless a veteran asks for and receives a "release from liability" from the VA office which guaranteed his home loan, he will be liable for payment in the event of default by the purchaser. Release from liability does not automatically restore GI loan entitlement, for entitlement is restored only if compelling reasons were present when selling the property.



REATHA TREADO

DIANE KLEMER

Hot Beach Junior High Track Team Clobbers Stockbridge

Stockbridge's intramural trackmen suffered a drubbing to end all drubbings at the hands of Beach's strong-armed, fleet-footed thirdgraders, May 15. This superb performance from Chelsea's team left its mark, 121-6.

On the home oval, Randy Sweeney was a triple winner, taking the high jump, pole vault and the 60-yard high hurdles. Chelsea's Carolyn Schardein also moved well, taking places in two events.

Mark Smyth started the ball rolling by putting the shot 42'8" into first place. Tim Welshans was second at 38'5" and Chuck Minix was third. All three places were taken again in the pole vault following Randy Sweeney's winning vault at 9'. Matt Heydlauff was second making it over 8'8". Steve Pennington was third with a vault of 6'6".

Again three Chelsea men placed in the high jump. Randy was first and Rodney Sweeney and John Daniels tied for second. In the long jump, John Toon covered 15'7" to win, with Tony Robards taking second at 14'9". Richard King was third.

The 60-yard high hurdles went to Chelsea thanks to Randy Sweeney's time of 10 seconds flat. Rodney Sweeney came in second with a time of 10.2 seconds.

Dave Hendricks took the 60-yard dash in 7.6 seconds with Mike Check coming next a tenth of a second later. Chelsea's Bob Fischer was third with 8 seconds flat on the clock.

One of Chelsea's feminine four, Carolyn Schardein made her mark in the 75-yard dash. She was third after being defeated by Mark Smyth, in second place, and winner Mark Houle.

Tony Robards won the 440-yard dash with Chris Smyth coming in third. This was the only event in which Stockbridge challenged the Beach boys. Robards was forced to run the best time of his life to keep Stockbridge from winning an event.

Another Chelsea sweep came in the 880 with David Dawson, Todd Weber and Phil Frame coming across the line in that order. Just two places were Chelsea's in the 100 low hurdles; Jeff Sweet was first and Rodney Sweeney was second.

EXPERT BUMPING and PAINTING

FREE ESTIMATES - ALL MAKES

LLOYD BRIDGES CHEVROLET

OPEN SATURDAY MORNING, 8 a.m. to 12 noon
475-1373 CHELSEA, MICH.

A Standard Want Ad will get you quick results!

Planning a Party ...for a Graduate?



Order
Personalized
Napkins

CHS COLORS

Deep blue, scalloped edged
paper napkins with name
and class in gold; or gold
napkins with blue imprint.

LUNCHEON and BEVERAGE
SIZES

SPECIAL - 50 for \$2.25; 100 for \$3.25
PERSONALIZED COASTERS - Pkg. of 32 - \$1.50

The Chelsea Standard

300 North Main Street Telephone 475-1371

MANAGER

We are a rapidly growing company seeking an individual with lumber and hardware experience who can motivate people. Responsibility includes hiring, training and managing personnel in a retail lumber and hardware store. Also customer relations, merchandising, purchasing, inventory control, and other general administrative functions. Excellent salary and benefits.

SUBMIT RESUME TO

BOX MA-10, CARE OF THE CHELSEA STANDARD, CHELSEA, MI 48118



CAROL FAIRBROTHER

DIANE KLEMER

JOHN R. YOUNG

CHS Seniors Granted U-M Regents-Alumni Scholarship

Three Chelsea High School seniors, Carol Ann Fairbrother, Diane Michael Klemer, and John Randolph Young, have been selected from among the many 1973 graduates due to enter the University of Michigan in the fall to be Regents-Alumni Scholars.

This honor, which is accompanied by a certificate and a \$50 honorarium, is based on the students' "superior academic achievement and their potential contribution to the scholarly community of the University of Michigan."

University alumni play an active part in the selection procedure. Finalists, chosen from all applicants for freshman admission at the university, are referred to local alumni for interviews and recommendations. Nearly 300 Michigan alumni took part this year.

Carol, who is also a National Merit Scholarship finalist, is enrolled in the College of Engineering. By the end of her freshman year, she will have decided whether to pursue chemical or computer engineering.

Carol, the daughter of Mr. and Mrs. F. G. Fairbrother of Waterloo, has been a very active and successful debater during her high school years. A former 4-H club member and ex-saxophone player in the high school band, Carol achieved an academic record worthy of membership in the National Honor Society.

Diane Klemer is also a National Honor Society member. Her academic abilities are balanced by a musical touch. The flutist is secretary of the band.

She is a former member of the Junior-Senior Trip Club and has been recently awarded a 100-hour Pin for her summer volunteer work at St. Joseph Mercy Hospital. She is currently employed part-time at the Dairy Queen.

Diane, who was awarded a \$500 scholarship at the March of Dimes dinner, Tuesday night, is enrolled in the five-year pharmacy program at the university. She will spend her summer taking English and calculus courses at Jackson

Community College. Her parents are Mr. and Mrs. Earl Klemer.

John "Randy" Young has plans to become a nuclear engineer. His enrollment in the College of Engineering was precipitated by his interest in science and math.

His extra-curricular interests include many sports. He was lettered in both varsity football and track. Golf is another sport he played two years for the Bulldogs. His hobbies are fishing and riding motorcycles.

John, the son of Mr. and Mrs. Donald R. Young of McKinley St., has not yet decided which kind of engineering he will specialize in.

Financial need is not a consideration in the selection of the 1,160 Regents-Alumni Scholars named this year.

Shoplifters Hit Twice at Boyer Store

Twice last week shoplifters made off with loot from Boyer Automotive Supply at 108 E. Middle St.

The first loss occurred mid-morning, May 15, when a \$90 Black & Decker 1/2-inch air wrench was taken from the store. According to police records, Houston Hardy, who was working in the store at the time, was able to describe two suspects to police.

Two young men had been in the shop just before the wrench was discovered missing from the display case. Houston is reported to have said that one of the two occupied his attention with a request while the other looked around the store. It is surmised that the theft took place at that time.

A single young man entered the store two days later around the same time, 10 a.m. Although the sales clerks in the store were on their guard, according to statements given to the police, they did not see him take anything. Nevertheless, shortly after he left, it was discovered that a brown leather purse had been taken from the office in the front of the store.

The purse contained \$20 in cash plus \$5.50 worth of pills and two sets of car keys.

Six-Year-Old Boy Escapes With Bruises In Bike-Car Crash

Six-year-old Scott Allen Deanhof of 234 Park St., emerged with relatively minor injuries, a broken nose and bruises, after colliding with a car driven by Craig Brian Alter of 701 Island Lake Rd., May 10.

Scott, who was riding his bike east on Park St., failed to see Alter's car approaching from the south on Madison as he came into the intersection. Alter was unable to brake in time to keep from hitting the child.

The accident occurred as the Deanhof youngster was riding to school.

Cherries give meats a tart lift to cheer the family. Braise a pot-roast in drained canned cherry juice and add the cherries just in time to heat through. Or, heat a can of cherry pie filling to pour over sausage and pancakes for a Sunday brunch.



Are you
gambling
with your
family's
security?

Suppose you were sued for \$500,000 ... and lost! Would you be able to stay out of bankruptcy? And what would happen to your family security? Suits involving hundreds of thousands of dollars are all too frequently started against businessmen and professionals simply because they are well-known as affluent and successful people! Here's an economical way to avoid such a risk! Our Executive Liability Insurance provides up to \$5,000,000 of protection for you and your family. Call us now. We can probably put all your liability insurance together and even save you some money.

it's better
altogether

A. D. MAYER AGENCY, INC.

115 PARK ST., CHELSEA
BOB BARLOW, AGENT
PHONE 475-2030Auto-Owners Insurance
Life • Home • Car • Business

We back you use our cash...save yours CONSTRUCTION LOANS

There's a Miles Man in your area. He specializes in arranging construction loans on new homes for do-it-yourselfers. He designs plans, professionally answers questions. There is no charge for his advice, help, or service. We can find another home that is easier to build or to pay for. Let our man solve your housing problem. Begin a new life. Build your home...the Miles Way. We furnish pre-cut building materials, step by step instructions, everything you need...inside and outside. Free delivery. A cash down payment is not important. No other plan like this.

PLEASE RUSH ME YOUR FREE CATALOG ON MILES BUILD IT YOURSELF HOMES

Name _____
Address _____
City, State, Zip _____Precut
MILES HOMES

17016 Mack Ave., Grand Rapids, MI 49526. Call 313-885-5549

There is a Miles local representative in your area

Handyman, be Homeowner
the Miles Way

COMPARE

STILL THE BEST SAVINGS PLANS IN TOWN!

ONE DAY	6 MONTHS	1 YEAR	2 YEAR
5%	5 1/4%	5 3/4%	6%
PER ANNUM	PER ANNUM	PER ANNUM	PER ANNUM

5.09% EFFECTIVE ANNUAL RATE	5.35% EFFECTIVE ANNUAL RATE	5.87% EFFECTIVE ANNUAL RATE	6.13% EFFECTIVE ANNUAL RATE
PASSBOOK SAVINGS NO MINIMUM	PASSBOOK CERTIFICATE \$1000 MINIMUM	PASSBOOK CERTIFICATE \$1000 MINIMUM	PASSBOOK CERTIFICATE \$5000 MINIMUM

INTEREST IS PAID AND COMPOUNDED QUARTERLY—EARLY WITHDRAWALS ARE SUBJECT TO PENALTY AS REQUIRED BY FEDERAL REGULATIONS

ANN ARBOR **SAFE** FEDERAL SAVINGS
the savings and loan specialists

HOURS: Mon.—Thurs. 9:00 A.M. to 5:00 P.M.
Friday 9:00 A.M. to 6:00 P.M.

ANN ARBOR: 1000 E. Washtenaw St. (at Division) • Westland: 10000 E. Grand Ave. (at North) • Plymouth: 10000 E. Grand Ave. (at North) • Chelsea: 300 North Main St. • Chelsea, MI 48118